

# KYLE & ZIMBABWE NATIONAL PARKS

MAPS AND INFORMATION REVISED SEPTEMBER 1972

RHODESIA NATIONAL TOURIST BOARD MAP No. 7



## FORT VICTORIA

Rhodesia was born when the Pioneer column striking forward in 1890 from what is now Botswana, founded the first permanent settlement at a place they named Fort Victoria—after the reigning queen. In the following year the Fort itself was built and Rhodesia's first town started to grow around it. Today, part of the Fort, a national monument, still stands in the heart of a town that is the administrative centre of a large surrounding area, including the great sugar, wheat and citrus enterprises in the near-by Lowveld.

## HOW TO GET THERE

**By road.** Fort Victoria is 293 km south of Salisbury and 288 km east of Bulawayo.

**By air.** Air Rhodesia operates flights from Salisbury and Bulawayo daily, Monday to Friday, and includes the area in its all-inclusive Flame Lily holiday tours.

## ACCOMMODATION

**Fort Victoria.** There are two hotels in the town, a motel 1.5 km from the town centre and a municipal caravan and camping site 1 km from the shopping centre. This site has bath and shower blocks, laundry facilities, electricity and shaving points. The charges are 50c per day per site.

## PLACES TO VISIT

The Bell Tower of the old fort still stands, and the curfew bell, dating back to the Matabele Rebellion in the 1890s, is still rung nightly at 9 o'clock.

Just outside the town, on the road to Birchenough Bridge, is a signposted turn-off to the Italian Chapel. This was built by Italian prisoners of war between 1942 and 1945, and features beautiful paintings and mosaics.

## FACILITIES

The town has a good shopping centre, cinema, library, golf course and swimming pool.

## INFORMATION

Information on the Fort Victoria/Lake Kyle/Zimbabwe area can be obtained from the Fort Victoria-Zimbabwe Publicity Association office, Allan Wilson Street (phone 2643, P.O. Box 340).

## KYLE NATIONAL PARK

Kyle National Park, situated on the south-eastern edge of the highveld, is one of the loveliest of Rhodesia's national parks. Centred on Lake Kyle, the second largest lake in the country, the park offers the visitor beautiful scenery, boating and fishing, and some of the most concentrated and interesting game viewing in Rhodesia. The 9 065 ha lake, with its many bays and inlets, and the nearby Beza and Nguni mountains, which form a backdrop to the wooded shores and blue water, combine the beautiful elements of lake and mountain scenery.

## ACCOMMODATION

In the game reserve there are one- and two-bedroomed lodges, fully self-contained and lit by electricity. A camping and caravan site is situated on a hill overlooking the lake, with its own ablution block with hot and cold water.

## GAME VIEWING

The game reserve on the northern shores of Lake Kyle is open the whole year round and has an abundance of game. Game-viewing drives may be restricted during heavy spells of rain. Giraffe, buffalo, sable, waterbuck, impala, wildebeeste, kudu, reedbuck, hippo and other animals can be found, but the reserve is noted for its population of rarer species—the white or square-lipped rhino and the oribi. Reedbuck are particularly plentiful. The bird life is also prolific. The gates of the reserve open at 6 a.m. and close at 6 p.m. An entrance charge of 15c per adult and 10c per child is made.

## FISHING

There is year-round fishing on Lake Kyle—bream and bass being the most widely found species. A fish biologist is stationed in the Kyle Game Reserve and is continuing with the stocking of additional species. Fishing licences are obtained from the Warden, and at Zimbabwe National Park, Beroma Hills, Glen Clova Club and Meikles, Fort Victoria.

## BOATING

Boating and sailing is permitted on the lake, but all craft must be registered and licensed with the Warden. There is a sailing club on the southern shore.

A car ferry operates across the lake to the game park. At lakeside establishments launch trips are available and a limited number of small boats with outboard motors are for hire.

## ZIMBABWE NATIONAL PARK

Zimbabwe has, for the last 100 years, been described as "the great mystery", and although much work has been done by archaeologists, this description still applies. This great complex of ruins with its Temple with 244 m long, 9 m high walls, the 10.3 m high conical tower, and the extensive ruins on the Acropolis 107 m high above the Valley of Ruins, are still a source of awe to the modern visitor.

## ACCOMMODATION

There are two hotels near the ruins, both with swimming pools. Adjacent to the ruins, the following National Parks accommodation is available: one-bedroomed chalets, two-bedroomed cottages and fully self-contained lodges. There is also a 4 ha caravan and camping site with overhead lighting, baths, showers and shaving points.

Charges for national parks accommodation are:

Lodges, including bedding for four persons, cutlery, crockery, cooking utensils, gas cooker and refrigerator and the services of a servant, \$2.50 per adult nightly or \$15 per adult week.

Cottages, including bedding, refrigerators, gas stoves and cooking utensils cost \$2 per adult nightly or \$12 per adult weekly.

Chalets cost \$1.50 per adult nightly or \$9 per adult weekly.

Bedding and refrigerators are supplied.

Caravan and camping charges are 25c per adult nightly and for shorter periods 25c per vehicle.

Charges for children between the ages of 3 and 16, in all cases, are half adult rates.

## AMENITIES

There is a picturesque nine-hole golf course situated in the shadow of the lofty hill crowned with the Acropolis Ruins.

At the Zimbabwe Museum, near the Ruins, jewellery, pottery and other artefacts found during archaeological excavations may be seen. Copies of the famous Zimbabwe Birds and other historic exhibits are also on view. Adjacent to the museum is a reconstruction of a 19th century Karanga Village, open to the public at a small admission fee.

Le Rhone Game Farm is east of the ruins and contains a variety of animals including cheetah, caracal and lion. There is a small admission fee.

## GUIDES TO THE RUINS

Portable radios that can receive a tape-recorded commentary transmitted in the Great Enclosure area are for hire at a small charge from the Museum. Guide books are also for sale.

## RESERVATIONS AND INQUIRIES

Reservations for National Parks accommodation can be made in advance at the Central Booking Office, Department of National Parks and Wild Life Management, P.O. Box 8151, Causeway, Salisbury; telephone 26087; telegrams "PARKLIFE" Salisbury; or call at their offices in Third Street (between Jameson and Central Avenues) Salisbury, or (early in 1973) to new offices in Electra House, Jameson Avenue, Salisbury. Deposits equal to one night's accommodation are normally required.

## OTHER ACCOMMODATION

For full details on all other accommodation establishments, and camping and caravan sites in these areas see "Hotels of Rhodesia", the official guide.

## PLEASE DO NOT

Annoy the animals.

Bring firearms or dogs into the parks.

Travel at speeds which will disturb the animals and cause dust.

Get out of your car in the game park.

Start a grass fire with a carelessly discarded match or cigarette.

Cut or damage trees or plants.

Annoy others with a gramophone or radio.

Leave any litter—this includes beer containers.

Hesitate to contact National Parks staff if they can be of any assistance.

# GO WELL - GO SHELL



Shell



**MAP No. 7**

**FORT VICTORIA**

**Morningside**

**BEZA RANGE**

**KYLE NATIONAL PARK**

**ZIMBABWE NATIONAL PARK**

**ZIMBABWE RUINS AREA**

**Reference**

Tarred Roads  
Gravel Roads  
Tracks  
Footpaths  
Distances  
National Park Boundary  
Petrol, Diesel  
Camping Sites  
Caravan Sites  
National Parks  
Accommodation  
National Monuments  
Golf Course  
View Points

**SCALE**

0 1 2 3 4 miles  
0 1 2 3 4 kilometres

**KYLE & ZIMBABWE NATIONAL PARKS**

**MAP No. 7**

**FORT VICTORIA**

**Morningside**

**BEZA RANGE**

**KYLE NATIONAL PARK**

**ZIMBABWE NATIONAL PARK**

**ZIMBABWE RUINS AREA**

**Reference**

Tarred Roads  
Gravel Roads  
Tracks  
Footpaths  
Distances  
National Park Boundary  
Petrol, Diesel  
Camping Sites  
Caravan Sites  
National Parks  
Accommodation  
National Monuments  
Golf Course  
View Points

**SCALE**

0 1 2 3 4 miles  
0 1 2 3 4 kilometres

**KYLE & ZIMBABWE NATIONAL PARKS**

**MAP No. 7**

**FORT VICTORIA**

**Morningside**

**BEZA RANGE**

**KYLE NATIONAL PARK**

**ZIMBABWE NATIONAL PARK**

**ZIMBABWE RUINS AREA**

**Reference**

Tarred Roads  
Gravel Roads  
Tracks  
Footpaths  
Distances  
National Park Boundary  
Petrol, Diesel  
Camping Sites  
Caravan Sites  
National Parks  
Accommodation  
National Monuments  
Golf Course  
View Points

**SCALE**

0 1 2 3 4 miles  
0 1 2 3 4 kilometres

**KYLE & ZIMBABWE NATIONAL PARKS**



# RHODES MATOPOS NATIONAL PARK

MAPS AND INFORMATION REVISED OCTOBER 1973

RHODESIA NATIONAL TOURIST BOARD MAP No. 5



About 32 km south of Bulawayo on a well-signposted, tarred road, the 43 200 hectare park is set amongst the Matopo Hills, where granite rocks rise in splendid confusions of gigantic boulders or swell in great domes. Full of historic associations and the spiritual home of the Matabele, the Matopos is the resting place of Cecil John Rhodes, the founder of the nation. In many caves beautiful rock painting can be seen, the only evidence of a people long lost in the African past. Today the scenery, game-viewing, fishing, boating and peacefulness combine to offer an ideal holiday centre.

## ROADS

The road to the park and the game park, the Circular Drive and the roads leading to Maleme Dam and Cecil Rhodes's grave are all tarred. The nearest garage is at Bulawayo, but petrol is available at all times from the store 8 km from Maleme Rest Camp.

## ACCOMMODATION

**Maleme Rest Camp:** Fully equipped two-bedroom lodges with kitchen and bathroom, exclusive services of attendant. One- and two-bedroom cottages with kitchen and bathroom BUT NOT equipped with crockery and cutlery, services of attendant shared; one- and two-bedroom chalets with external cooking and ablution facilities BUT NOT equipped with crockery and cutlery, services of attendant shared. Lighting is provided by electricity from dusk to 11.15 p.m. and for one hour at dawn; paraffin and gas lamps are also available. All accommodation is equipped with basic furniture, beds, mattresses and bed-linen, towels, toilet soap, refrigerators, gas hot plates (cottages) or gas stoves with oven and grill in the case of lodges, as well as basic cooking utensils.

The charges for accommodation per adult are: lodges \$2.50 per night, \$15 per week; cottages \$2 per night, \$12 per week; chalets \$1.50 per night, \$9 per week; children between the ages of 3 to 16 years are charged half rates.

## CARAVAN AND CAMPING SITES

**Maleme Dam:** Camping and caravan site with ablution block; hot and cold water; waterborne sanitation. Approaches to this site are very steep and caravanners should reconnoitre before attempting to negotiate them. A tow service is available on request, during office hours, at a charge of 50c per caravan.

**Mtsheli Dam:** Caravan and camping site with ablution block; hot and cold water; waterborne sanitation.

**Toghwana Dam:** Caravan and camping site with ablution block; hot and cold water; waterborne sanitation.

**Arboretum:** Caravan park with ablution block; hot and cold water; waterborne sanitation. Camping site with ablution block; cold water only.

**Mesilume Dam:** Caravan and camping site with no facilities. Caravan and camping site charges are 25c per adult nightly, 12c for children between the ages of 3 and 16.

**Important Note:** At all camping and caravan sites all drinking water should be boiled.

**Mpopoma Dam:** Situated within the game park this picnic site has an ablution block, cold water and waterborne sanitation. Game park entrance fees are payable to gain access to this area.

Dogs are not permitted in a game area and will only be allowed in rest camps, camping and caravan sites under exceptional circumstances and on prior written authority of a park officer.

## GAME VIEWING

Within the National Park is a 6 677 hectare game park, set amongst some of the most beautiful rock formations in the area. Animals to be seen include square-lipped rhinoceros, buffalo, eland, wildebeeste, zebra, giraffe, sable, impala, reedbuck, kudu and other small mammals. Also found in this area are ostrich, crocodile, waterbuck, klipspringer, leopard, duiker, steenbuck, warthog, bushpig and dassies, as well as a wide variety of colourful bird life. The park is open from half an hour before sunrise to half an hour after sunset, and an entrance fee of 15c per adult and 10c per child is payable. Visitors must stay inside their cars within the game park and may not drive off the road. A speed limit of 40 km/h is set for the game-viewing roads although it is recommended that a speed of 30 km/h is more conducive to successful game-spotting.

## BOATING AND FISHING

Licensed yachts and rowing boats are permitted on most dams. Year-round fishing for bream, bass, silverfish and barbel can be enjoyed on the dams in the park at reasonable rates. Licence fees for fishing per person are 20c per day, \$1 per week, \$2 per month or \$4 per year, and are obtainable from the park attendants or staff at the various dams.

## RESERVATIONS AND INQUIRIES

Reservations for National Parks accommodation and caravan and camping sites should be made in advance at the Central Booking Office of the Department of National Parks and Wild Life Management, P.O. Box 8151, Causeway, Salisbury; telephone 706077; telegrams "PARKLIFE" Salisbury; or call at their offices in Africa House, 100 Stanley Avenue, Salisbury. Deposits equal to one night's accommodation are normally required.

All other inquiries should be directed to the Warden, Rhodes Matopos National Park, Private Bag K 5142, Bulawayo. (Telephone Matopos 0-1913.)

## PLEASE DO NOT

Annoy the animals.

Travel at speeds which will disturb the animals and cause dust.

Start a grass fire with a carelessly discarded match or cigarette.

Cut or damage trees or plants.

Annoy others with a gramophone or radio.

Leave any litter—this includes beer containers.

Hesitate to contact National Parks staff if they can be of any assistance.

# GO WELL - GO SHELL



Shell

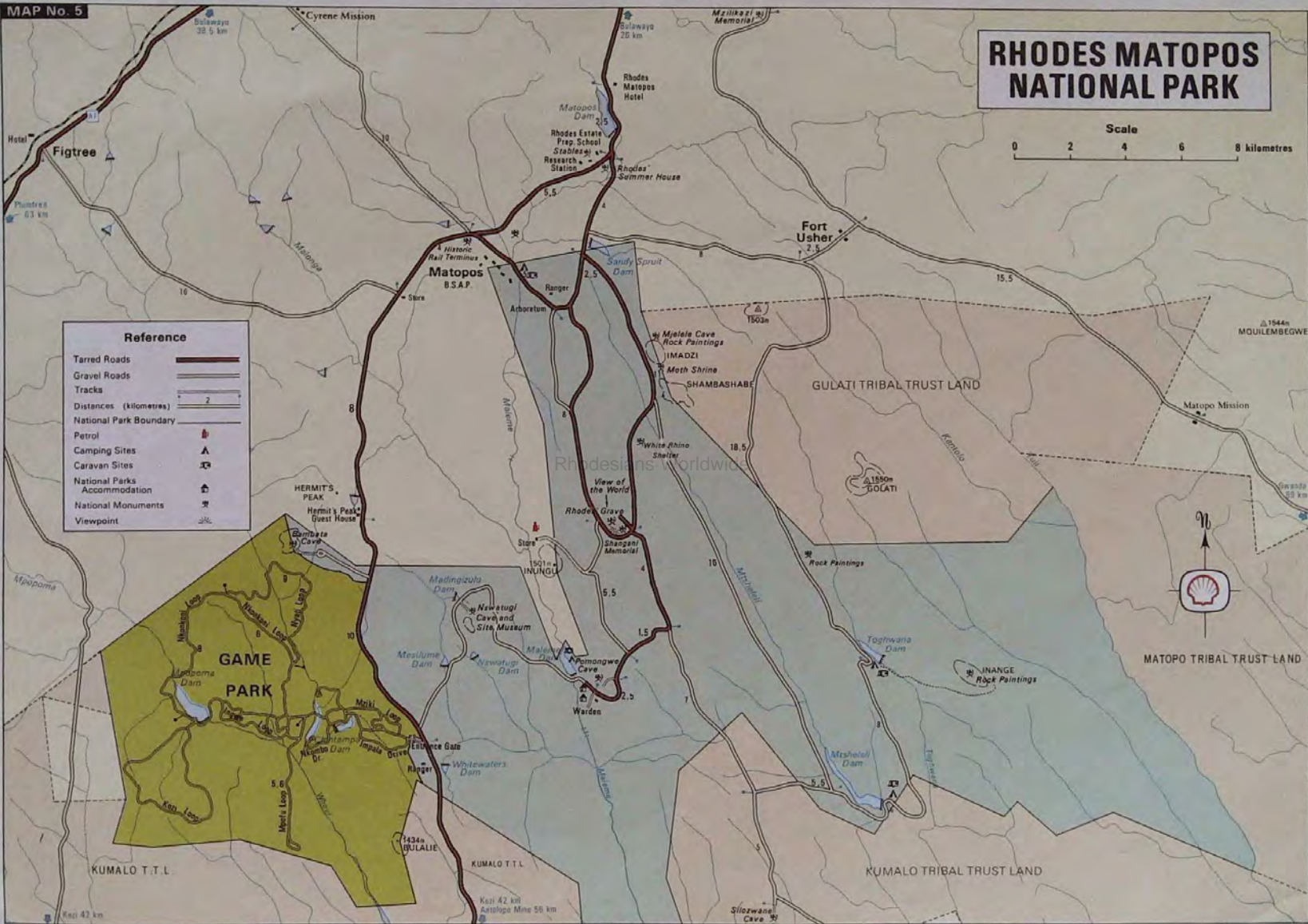


# RHODES MATOPOS NATIONAL PARK

Scale  
0 2 4 6 8 kilometres

**Reference**

- Tarred Roads
- Gravel Roads
- Tracks
- Distances (kilometres)
- National Park Boundary
- Petrol
- Camping Sites
- Caravan Sites
- National Parks
- Accommodation
- National Monuments
- Viewpoint



# MELSETTER AREA

MAPS AND INFORMATION REVISED SEPTEMBER 1972

RHODESIA NATIONAL TOURIST BOARD MAP No. 8



## CHIMANIMANI NATIONAL PARK

The park is situated on the eastern border of Rhodesia, among the white-quartzite and sand-stone Chimanimani Mountains, part of the great range which borders the African plateau from Ethiopia to South Africa. The nearest village is Melsetter, which lies 286 km east of Fort Victoria and 148 km south of Umtali. To reach the national park take the Orange Grove road opposite the Chimanimani Hotel and follow the signposts "Chimanimani National Park" and "Ourward Bound Mountain School". Where the road forks 1.6 km before the Ourward Bound School take the right-hand road to the Base Camp car park 2 km farther on. From here one must proceed on foot. All visitors must report to the Base Camp information office where the game scout on duty will advise on the most suitable ascent route.

## ROADS

The road from Umtali to Melsetter via Skyline is two-lane tarmac. The old road from Cashel to Melsetter is a tortuous mountain road with a gravel surface, but scenically very attractive. From Melsetter to the car park at the foot of the mountains, a distance of 19 km, the road is of gravel of various standards, but is negotiable by all types of vehicles, provided care is taken. This road is not suitable for caravans.

## ACCOMMODATION

The only hotel in the area is the Chimanimani Hotel in Melsetter. There is a caravan/camping site at Lindley West Farm, 2.7 km from Melsetter on the Cashel road. On the plateau there is a mountain chalet with accommodation for 24 persons in male and female dormitories. Gas lamps and stoves are provided. Sleeping bags with inners, if required, are included in the nightly tariff of 75c for adults and 37c for children. There is a cold shower, drinking taps and waterborne toilet.

Camping is allowed, free of charge, anywhere within the park, except at the Base Camp, at the camper's own risk.

At the Base Camp camping site there is an ablution block provided for visitors who wish to stay overnight before ascending the mountains. Camping fees are 25c per night for adults and 12c for children between the ages of 3 and 16.

## GAME VIEWING

Eland, bushbuck, blue duiker and sable may be seen, while the sharp-eyed may observe the sure-footed klipspringer among the rocky outcrops. Leopard are present, but seldom seen.

## BIRDS

Purple-crested louries, malachite sunbirds, coleys, francolins, bokmakierie, laughing doves, larks, eagles, trumpeter hornbills, secretary-birds, swallows and swifts can be seen.

## TREES AND FLOWERS

The climate of the area gives rise to vegetation much like that of South Africa's Cape, with many species of unique plant life. Remnants of dense evergreen forest are found in sheltered valleys and ravines while the upper slopes are covered with bracken and phillipia. Terrestrial and epiphyte orchids abound and proteas and aloes add their colour to the scene.

## FISHING

Excellent trout fishing can be enjoyed on the Bundi River which runs along the plateau from north to south. The season runs from 1st October to 30th April. Permits are obtainable from the Chimanimani Hotel, the Base Camp information office and from the mountain chalet attendant.

## INQUIRIES

All inquiries should be directed to the Senior Ranger, Chimanimani National Park, Private Bag 2063, Melsetter, Rhodesia. (Phone Melsetter 03112.)

## MELSETTER ELAND SANCTUARY

This sanctuary, situated on the north of Melsetter Village, includes the Bridal Veil Falls and Pork Pie (Nyamzure). Eland, bushbuck, grey duiker and klipspringer can be seen. Camping is not permitted within the sanctuary but picnicking is allowed at the Bridal Veil Falls.

## PLEASE DO NOT

- Start a grass fire with a carelessly discarded match or cigarette.
- Annoy others with a gramophone or radio.
- Cut trees without permission.
- Leave any litter—this includes beer containers.
- Collect plants or flowers without permission.
- Bring firearms into the Park.

Rhodesians Worldwide

# GO WELL - GO SHELL



Shell





# NGEZI NATIONAL PARK

MAPS AND INFORMATION REVISED SEPTEMBER 1972

RHODESIA NATIONAL TOURIST BOARD MAP No. 19



One of the two national parks situated in Rhodesia's Midlands, the 6 400 ha Ngezi National Park has been developed around the 580 ha Ngezi Dam. Sheltered on the west by the Mashaba Hills, the dam, with its many bays and inlets offers good fishing, and in the park the visitor can enjoy pleasant scenic surroundings and opportunities for walking amongst, and exploring, some typical Rhodesian countryside.

## HOW TO GET THERE

The park lies approximately 161 km south-west of Salisbury, and 91 km north-east of Que Que, and can be approached from four directions:

- 103 km south of Salisbury on the Fort Victoria road, take the turn-off to Featherstone 9,6 km west of the main highway. From Featherstone, proceed on narrow tar for 8 km then take the all-weather gravel road which leads for 56 km to the park.
- 37 km north of Que Que on the main road to Salisbury, turn off at Battlefields. From this point there is a 67 km dry-weather-only road to Ngezi.
- 35,4 km east of Que Que on the road to Umvuma, turn off on to the dry-weather-only road that leads for 56 km to the park.
- 72 km from Salisbury, at Selous, a dry-weather-only gravel road leads for 80 km to the park.

## ROADS

The roads in the park are gravel and may be impassable in wet weather.

## ACCOMMODATION

On the dam's southern shore are cottages and lodges. The cottages have two bedrooms, a kitchen (with refrigerator, basic cooking utensils and wood-burning stove), living room and modern bathroom, bedding is provided, lighting is by pressure lamp. Guests at the cottages must provide their own cutlery, crockery, towels, and, of course, food. The lodges are completely self-contained, and have two bedrooms, a kitchen (with wood-burning stove), dining alcove and modern bathroom. Cooking utensils, crockery, cutlery, pressure lamps, linen, bedding, towels, refrigerator and the services of a servant for cleaning and washing-up, are all supplied.

The park also has five camping sites, two caravan sites, and a caravan park with ablution block. There is an ablution block for campers near the spillway.

The cottages cost \$2 per adult nightly or \$12 per adult weekly. The lodge costs \$2,50 per adult nightly or \$15 per adult weekly. Children aged between 3 and 16 years, half rates. At the caravan and camping

sites a charge of 25c per person per night or 25c a vehicle for shorter periods, is made. Children aged 3 to 16 years, half rates.

## FACILITIES

At the cottages and lodge an African attendant will carry out cleaning, provide firewood and light fires in boilers and stoves. Visitors are strongly advised to ensure that they have adequate supplies of petrol and food before they enter the park, as the nearest stores and filling stations are at Beatrice, Que Que and Battlefields. There is a store 1 km from the park at the junction of the Featherstone and Que Que roads.

## FISHING

Year-round fishing for bream, barbel and tiger-fish is permitted. Fishing permits are obtainable from the Warden.

## BOATING

Boating and sailing is allowed on the dam, but all craft must be registered with the Warden.

## GAME VIEWING

This national park is not a game-viewing area, but several varieties of antelope are often seen, and hippo and crocodile have taken up residence in the dam.

## RESERVATIONS AND INQUIRIES

Reservations for National Parks accommodation, camping and caravan sites, should be made in advance at the Central Booking Office, Department of National Parks and Wild Life Management, P.O. Box 8151, Causeway, Salisbury; telephone 26087; telegrams "PARKLIFE" Salisbury; or call at their offices in Third Street (between Jameson and Central Avenues) Salisbury, or (early in 1973) to new offices in Electra House, Jameson Avenue, Salisbury. Deposits equal to one night's accommodation are normally required.

All other inquiries should be directed to the Warden, Ngezi National Park, Private Bag 207, Featherstone, Rhodesia. (Phone Umniati 426.)

## PLEASE DO NOT

- Bring firearms or dogs into the park.
- Annoy any wild animals.
- Start a grass fire with a carelessly discarded match or cigarette.
- Cut trees or damage plants.
- Annoy others with a gramophone or radio.
- Leave any litter—this includes beer containers.
- Hesitate to contact National Parks staff if they can be of any assistance.

# GO WELL - GO SHELL



Shell



## Reference

### Scale

A number line with two scales. The top scale is labeled 'miles' and has markings at 0, 1, and 2. The bottom scale is labeled 'kilometres' and has markings at 0, 1, and 2. The distance of 2 miles is equivalent to 3.2 kilometres.

Rhodesians Worldwide

MAP No. 19

Mapwork by M. O. Collins (Pvt.) Ltd. Compiled from State Copyright Mapping with the permission of the Surveyor General. Copyright Reserved. Produced by the Rhodesia National Tourist Board. Printed by the Government Printer.

63 km  
Featherstone 39m  
Old Ft. Victoria-  
Salisbury Road 35m  
56.3 km



# SEBAKWE NATIONAL PARK

MAPS AND INFORMATION REVISED SEPTEMBER 1972

RHODESIA NATIONAL TOURIST BOARD MAP No. 18



This 2 510 ha park centred on the 1 538 ha Sebakwe Dam is situated in the Great Dyke area of the Midlands of Rhodesia 51 km east of Que Que on the road to Umvuma.

## ROADS

The access road to the park and the dirt roads within the park can be negotiated by all types of vehicles. The nearest petrol station is at Que Que.

## ACCOMMODATION

There are cottages and a lodge; paraffin pressure lamps. Charges for the cottages are \$2 per adult per night or \$12 per adult per week. Lodge \$2,50 per adult per night or \$15 per adult per week. Children from 3-16 years of age are charged half rates.

A 1 ha site provides for the camper and caravanner and has an ablution block with water tap and toilet. Firewood is available. Camping and caravanning site fees are 25c per adult nightly, children 12c.

The nearest hotel and stores are at Que Que.

Dogs are not allowed in any game area and will only be permitted in rest camps, camping and caravan sites under exceptional circumstances and on prior written authority of a Parks Officer.

## GAME VIEWING

A wide variety of bird life can be observed, but game is confined mainly to sable, kudu, waterbuck, reedbuck and zebra, which can be seen near the dam towards evening.

## FISHING

Tilapia (bream), barbel and yellow-fish abound in the dam. Fishing fees are 20c per person per day, or \$1 per week, and licences are available from the Warden.

## BOATING

There is an active sailing club based on the dam, whose members include yachting and water-ski-ing enthusiasts. Boating in craft approved by the Warden is permitted, but boats must be licensed.

## AMENITIES

Tennis courts are available for the use of rest camp visitors only; children's paddling pool, swings and sand-pit.

## RESERVATIONS AND INQUIRIES

All reservations for accommodation in the Park, including caravan and camping sites, should be made to the Central Booking Office, Department of National Parks and Wild Life Management, P.O. Box 8151, Causeway, Salisbury; telephone 26087; telegrams "PARKLIFE" Salisbury; or call at their offices in Third Street (between Jameson and Central Avenues) Salisbury, or (early in 1973) to new offices in Electra House, Jameson Avenue, Salisbury. Deposits equal to one night's accommodation are normally required.

All other inquiries for licences and further information should be made to the Warden, Sebakwe National Park, P.O. Box 454, Que Que. Phone 2476-15.

## PLEASE DO NOT

Start grass fires with a carelessly discarded cigarette or match.

Annoy others with a gramophone or radio.

Cut trees without permission.

Leave any litter—this includes beer containers.

Camp on the north shore or on the islands.

Disturb or interfere with bird nests.

Remove plants or take cuttings from the park.

Speed—there is a general speed limit of 25 km/h.

Hesitate to contact National Parks staff if they can be of any assistance.

Rhodesians Worldwide

# GO WELL - GO SHELL



# SEBAKWE NATIONAL PARK

Scale

0 1/2 1 miles  
0 1/2 1 kilometres

## Reference

Gravel Roads	==
Tracks	---
4 Wheel drive Track	---
Distances	7 miles
Distances	11 kilometres
National Park Boundary	---
Camping Sites	▲
Caravan Sites	■
National Parks Accommodation	▲
Proposed Wilderness Area	---

MAP No. 18

Mapwork by M. O. Cellina (Pvt) Ltd. Compiled from State Copyright Mapping with the permission of the Surveyor General. Copyright Reserved. Produced by the Rhodesia National Tourist Board. Printed by the Government Printer.



# RHODES INYANGA NATIONAL PARK

MAPS AND INFORMATION REVISED OCTOBER 1973

RHODESIA NATIONAL TOURIST BOARD MAP No. 10



## RHODES INYANGA & MTARAZI FALLS NATIONAL PARKS

These two parks lie at the northern end of the 322 km long mountain chain along Rhodesia's border with Mozambique, covering together almost 31 370 ha. The larger is the Rhodes Inyanga National Park of 28 900 ha, the Mtarazi Falls National Park comprising 2470 ha adjoining the southern boundary of the main park. Flanking the park is the country's highest mountain, Mount Inyangani, and from this and many other peaks small streams rise, combining into rivers, creating many spectacular waterfalls. It is an area of striking natural beauty, which, combined with a wide choice of accommodation, first-class trout fishing and bracing mountain air, makes it an ideal holiday area.

As there is neither accommodation nor facilities in the smaller park, all references in the following information are to the Rhodes Inyanga National Park.

## HOW TO GET THERE

From Rusape, 169 km east of Salisbury on the main road to Umtali, a clearly marked turn-off leads for 88 km on a tarred highway to the park. From Umtali a scenic, tarred highway leads 85 km north to the park from a turn-off 9.6 km west of the town.

## ROADS

The park's well-signposted roads are gravel, and can be negotiated by all types of vehicles. In the rainy season some roads may be impassable, and inquiries should be made at the Warden's office.

## ACCOMMODATION

The main concentration of accommodation, including lodges, is at the Mare and Rhodes dams, while three others are alongside trout streams:

**Mare and Rhodes Dams:** Lodges, fully equipped for two or four persons, consisting of living room with fireplace, two bedrooms, integral kitchen, bathroom and toilet facilities. Bedding, cooking facilities and utensils, crockery, cutlery, towels and refrigerator are provided, as are the services of a park attendant. Fees are \$2.50 per adult per night or \$15 per adult per week. There are also 2-bedroomed cottages with a living room with fireplace and integral kitchen, bathroom and toilet facilities. Basic cooking utensils, bedding and refrigerators are supplied. One park attendant is assigned to two cottages. Fees are \$2 per adult per night or \$12 per adult per week. Children aged 3 to 16 are charged half rates. All lighting is by electricity.

**Nyamziwa Falls:** 11 km from the Warden's office. A 2-bedroomed chalet with separate kitchen and ablutions. Basic cooking utensils, gas lamps, a refrigerator and bedding are supplied. Fees are \$1.50 per adult per night or \$9 per week. Children aged 3 to 16, half rates.

**Pungwe Drift:** 22.5 km from the Warden's office. Two 2-bedroomed cottages, each with living room and fireplace, kitchen, bathroom and toilet. Basic cooking utensils are provided, and refrigerators and bedding are supplied. Lighting is by gas lamp. Fees are \$2 per adult per night or \$12 per week. Children aged 3 to 16, half rates.

## CARAVAN AND CAMPING SITES

**Inyangombe Camp Site:** Three ablution blocks with showers, basins, hot and cold water and toilets, fire-grids and firewood.

**Mare Caravan Park:** At confluence of Inyangombe and Mare rivers; ablution block with showers, basins, hot and cold water and toilets.

Servants are not allowed to remain overnight on caravan or camping sites but limited accommodation for servants at Mare Dam may be reserved on application to the Warden.

There are six hotels in the area, private chalets at Inyanga Township and a caravan site at Staffin.

## FISHING

Over 80 km of streams and rivers as well as the Mare, Rhodes and Purdon dams and Lake Gulliver, all within the park, offer good fishing for rainbow, brook and brown trout under a variety of conditions. Only artificial fly fishing is permitted. The season for Lake Gulliver, Purdon Dam, rivers and streams is from 1st November to 31st May, while all-year-round fishing is allowed from the Mare

and Rhodes dams. Licences, details of bag limits and other regulations are available from the Warden's office. Special licences are required for Lake Gulliver and Purdon Dam.

## BOATING

Boating and sailing are allowed on the Mare Dam, but power boating is not permitted. Craft must be registered and licensed. (Licence fee is \$2 per annum.)

## SPORTS

Hotels in the area offer facilities for tennis, bowls and swimming. In addition, there are three golf courses, one in the park itself, near the Warden's office, one at Troutbeck Inn, and the Montclair Golf Course, near Juliasdale. The natural swimming pool on the Inyangombe River, near the bridge on the Inyanga Village road, is considered safe for bathing.

## SCENIC DRIVES

**To World's View,** 6.4 km west of Troutbeck, where one can drive to the brink of the Inyanga Mountains, which drop hundreds of metres to flat country in the west. **To Pungwe View,** 25.7 km from the Warden's office on the Old Umtali road, where, from a viewpoint, one can see the 244 m high Pungwe Falls hurtling into a deep, heavily wooded, 9.6 km long gorge. **To Honde View,** a few kilometres further on, and the **Mtarazi Falls,** a 0.8 km further, the highest falls in Rhodesia, cascade 762 m into the Honde Valley.

## WATERFALLS

Other easily accessible falls are the Inyangombe and the Nyamziwa.

## RUINS

A forgotten race once lived at Inyanga, and the fascinating remains of their settlements are still visible over many thousands of hectares. The following are the better known and most accessible:

**Pit structures** (thought to have been livestock pens).

**Nyangwe Fort,** on a hill overlooking the Mare Dam.

**Van Niekerk Ruins,** a vast system of forts, pits and terraces, 24 km from the Warden's office.

**Nyahokwe Ruins and Site Museum,** approximately 13 km north-west of the Angler's Rest Hotel.

## OTHER ATTRACTIONS

The tourist can also visit the trout research centre near the Mare Dam; the fruit orchards established by Rhodes, and the Rhodes Hotel, of which a part was originally the homestead for Rhodes's private estate.

## FACILITIES

At Inyanga Township and Juliasdale the visitor can obtain foodstuffs, fresh milk and meat, as well as toilet requisites, films, gas and petrol.

## RESERVATIONS AND INQUIRIES

Reservations for National Parks accommodation, camping and caravan sites should be made in advance at the Central Booking Office, Department of National Parks and Wild Life Management, P.O. Box 8151, Causeway, Salisbury; telephone 706077; telegrams "PARKLIFE" Salisbury; or call at their offices in Africa House, 100 Stanley Avenue, Salisbury. Deposits equal to one night's accommodation are normally required.

All other inquiries should be directed to the Warden, Rhodes Inyanga National Park, Private Bag T 7901, Umtali, Rhodesia. (Telephone Juliasdale 1211.)

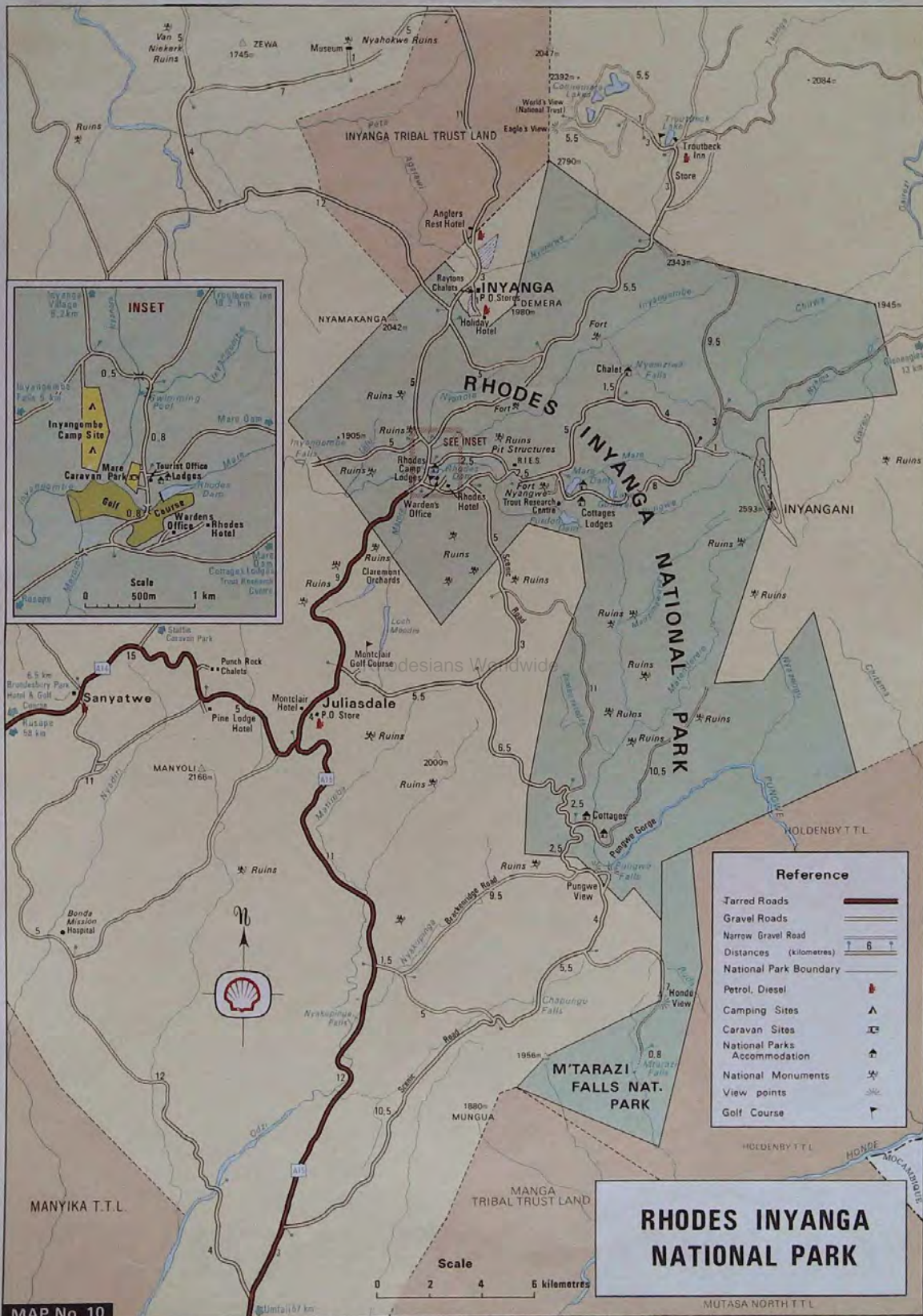
## PLEASE DO NOT

Bring dogs into the rest camps, camping or caravan sites.  
Start a grass fire with a carelessly discarded match or cigarette.  
Cut or damage trees or plants.  
Annoy others with gramophones or radio played at an excessive volume.  
Leave any litter—this includes beer containers.  
Hesitate to contact National Parks staff if they can be of any assistance.

# GO WELL - GO SHELL









# VUMBA AREA

MAPS AND INFORMATION REVISED SEPTEMBER 1972

RHODESIA NATIONAL TOURIST BOARD MAP No. 9



## VUMBA NATIONAL PARK

The 200 ha Vumba National Park is situated 29 km from Umtali, 1 530 m above sea level in the lush, green Vumba Mountains, part of Rhodesia's eastern border range. Follow the tarred road to Cloudlands and turn right on to gravel road.

## ROADS

The road winds up through steep mountains, heavily clothed with msasa trees, which present a brilliant tapestry of reds, yellows and rich olive greens in the Rhodesian spring, and is tarred as far as Cloudlands; 17,7 km from Umtali. The remainder of the road is gravel but is maintained and can be negotiated by all types of vehicles. Watch for cattle, particularly at night and during mist periods.

## ACCOMMODATION

A caravan and camping site with a swimming pool is maintained in the park, and there are four hotels in the area, all of excellent standard. Mountain Lodge and Leopard Rock are only a few kilometres from the park, while Impala Arms and White Horse Inn are 21 km and 17,7 km back towards Umtali. For full details on these hotels and other private accommodation establishments see the "Hotels of Rhodesia" publication.

## FLOWERS AND TREES

The well-wooded park includes 14 ha of landscaped gardens built around perennial streams which form a small lake. Sheltered walks between indigenous fern trees lead to displays of banked hydrangeas, proteas and azaleas. Begonias, lilies, aloes, fuchsias and many other species, also flower in abundance here. To the east, wide vistas over Mozambique can be enjoyed, for the ground drops sharply away to the plains hundreds of metres below. Already established as a colourful

botanical garden in striking surroundings, the park's flower gardens are being extended each year. The natural indigenous forest of sub-tropical equatorial species comprises many hectares of the park, and is one of its principal features.

## AMENITIES

At nearby hotels, riding, golfing, tennis and other holiday pursuits can be enjoyed in mountain surroundings. From Castle Beacon (1 910 m, the highest point in the Vumba), 6,4 km from the park, or Leopard Rock Mountain, 1,6 km from the park, views from horizon to horizon can be seen.

## RESERVATIONS AND INQUIRIES

Reservations and inquiries for camping and caravan sites in the Vumba National Park should be made in advance to the Central Booking Office, Department of National Parks and Wild Life Management, P.O. Box 8151, Causeway, Salisbury; telephone 26087; telegrams "PARKLIFE" Salisbury; or call at their offices in Third Street (between Jameson and Central Avenues) Salisbury, or (early in 1973) to new offices in Electra House, Jameson Avenue, Salisbury.

## PLEASE DO NOT

- Start fires with a carelessly discarded cigarette or match.
- Annoy others with a gramophone or radio.
- Cut trees without permission.
- Leave any litter—this includes beer containers.
- Remove plants or take cuttings from the park.
- Speed—there is a general speed limit of 25 km/h in the park.
- Hesitate to contact National Parks staff if they can be of any assistance.

Rhodesians Worldwide

# GO WELL - GO SHELL



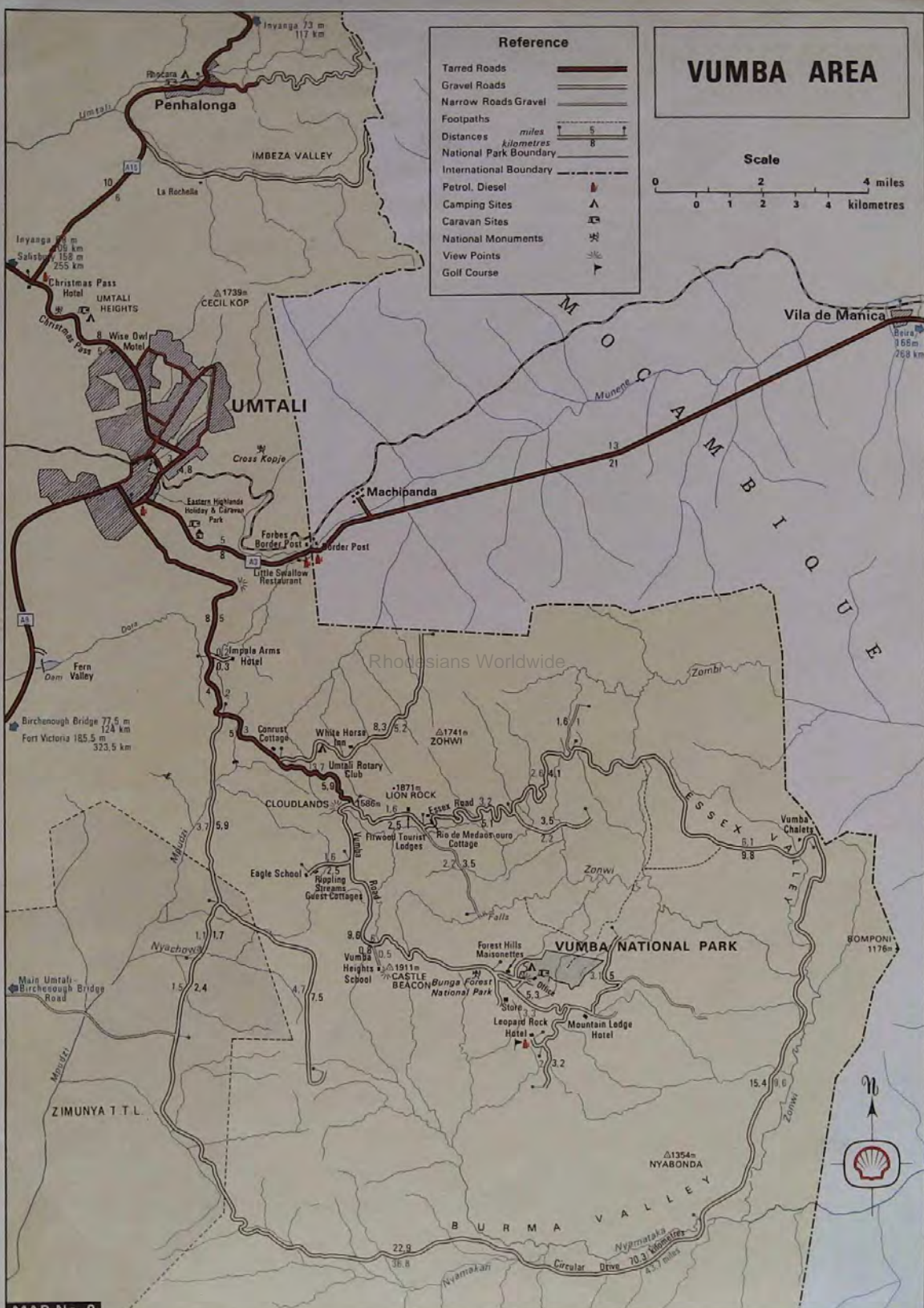
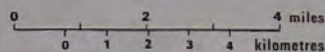
Shell

# VUMBA AREA

## Reference

Tarred Roads	
Gravel Roads	
Narrow Roads Gravel	
Footpaths	
Distances	
National Park Boundary	
International Boundary	
Petrol, Diesel	
Camping Sites	
Caravan Sites	
National Monuments	
View Points	
Golf Course	

## Scale



MAP No. 9

Mapwork by M. Q. Collins (Pvt) Ltd. Compiled from State Copyright Mapping with the permission of the Surveyor General. Copyright Reserved. Produced by the Rhodesian National Tourist Board. Printed by the Government Printer.



# ROBERT MCLWAIN NATIONAL PARK

MAPS AND INFORMATION REVISED SEPTEMBER 1972

RHODESIA NATIONAL TOURIST BOARD MAP No. 12



The 5715 ha Robert McIlwaine National Park surrounds the 14.5 km long Lake McIlwaine, which provides Salisbury's principal water requirements and is situated 32 km west of the city. The popular north bank, where the numerous boating and sailing-clubs, tea gardens, hotel, camping and caravan sites can be found, is reached by turn-offs 16 km (Outlands Road) and 29 km from the city on the Bulawayo road. Another turn-off 3.2 km further on leads to the dam wall where there is a restaurant. A gravel road branches off here, leading for about 13 km through the game park to the rest camp on the south bank.

## ROADS

The roads within the park are earth/gravel, but can be easily and safely negotiated by all types of vehicles.

## ACCOMMODATION

On the northern shore there is a licensed hotel with a swimming pool; nearby are the National Parks caravan park with two ablution blocks and the commercial Lakeside Caravan Park. Adjacent to Trader Horn Creek is the National Parks camping site with an ablution block. Also on the northern shore, and close to the Ancient Mariner is the Rhodesian Caravan Association (Rhocara) site, with swimming pool, clubhouse and ablution blocks. On the southern shore, in the game park area, there are chalets with electricity and lodges with paraffin lamps. Two swimming pools and other recreational facilities are available for the use of game park rest camp visitors. Also within the game park, at the public Mooring Site, is a combined caravan/camping site with ablution block.

One- or two-bedroomed chalets with bedding and refrigerator cost \$1.50 per adult nightly or \$9 per adult weekly. Children between the ages 3 to 16 years, half rates.

Lodges, including bedding, refrigerator, crockery, cutlery, cooking utensils and the services of an African servant cost \$2.50 per adult nightly or \$15 per adult weekly. Children between the ages 3 to 16 years, half rates.

Caravan and camping charges are 25c per adult and 12c per child per night. Shorter periods 25c per vehicle. Caravan park charges per night are 75c for a four-berth caravan and 25c for each additional adult or child.

## GAME VIEWING

The game park, 1 600 hectares in extent, is open between sunrise and sunset throughout the year.

Entrance fees 15c for adults, 10c for children aged between 3 and 16. Animals which can be seen in the game park include zebra, giraffe, eland, sable, wildebeeste, tsessebe, kudu, waterbuck, reedbuck, impala, duiker, ostrich, baboon and the rare white or square-lipped rhino.

## BIRDS

In a survey made at the lake in 1954 over 250 species of bird were identified. These include knob-nosed duck, Egyptian geese, black duck, red-knobbed coot, jacanas, and many egrets, herons and guinea fowl.

## FISHING

There is year-round fishing in the lake for tiger-fish, tilapia (bream), yellow fish, honyani salmon, bottlenose and barbel. Permits (at a cost of 20c per day) can be obtained from assistants who patrol the shore.

## BOATING

Power boats and yachts are permitted on the lake, but all craft must be registered with the Warden.

## RESERVATIONS AND INQUIRIES

Reservations for National Parks accommodation, camping and caravan sites should be made in advance at the Central Booking Office, Department of National Parks and Wild Life Management, P.O. Box 8151, Causeway, Salisbury; telephone 26087; telegrams "PARKLIFE" Salisbury; or call at their offices in Third Street (between Jameson and Central Avenues) Salisbury, or (early in 1973) to new offices in Electra House, Jameson Avenue, Salisbury. Deposits equal to one night's accommodation are normally required.

All other inquiries should be directed to the Warden, Robert McIlwaine National Park, Private Bag 962, Norton, Rhodesia. (Phone Norton 229.)

## PLEASE DO NOT

Annoy the animals.

Bring firearms into the park.

Take dogs into the game park or rest camp areas.

Travel at speeds which will disturb the animals and cause dust.

Start a grass fire with a carelessly discarded match or cigarette.

Cut or damage trees or plants.

Annoy others with a gramophone or radio.

Leave any litter—this includes beer containers.

Hesitate to contact National Parks staff if they can be of any assistance.

# GO WELL - GO SHELL



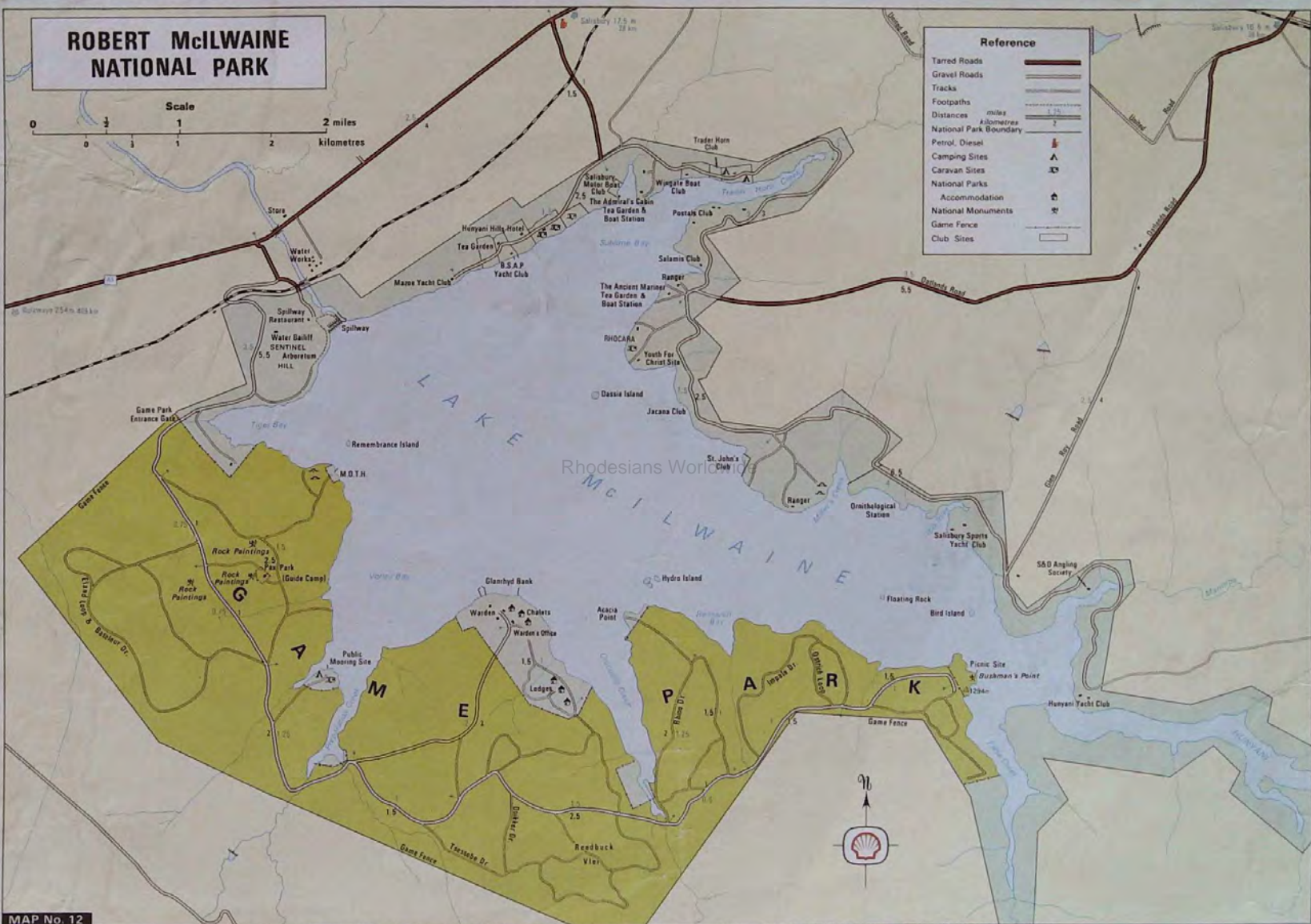
Shell

# ROBERT McILWAIN NATIONAL PARK

Scale

0 1 2 miles  
0 1 2 kilometres

Reference	
Tarred Roads	
Gravel Roads	
Tracks	
Footpaths	
Distances	
National Park Boundary	
Petrol, Diesel	
Camping Sites	
Caravan Sites	
National Parks	
Accommodation	
National Monuments	
Game Fence	
Club Sites	





# KARIBA AREA EAST

MAPS AND INFORMATION REVISED SEPTEMBER 1972

RHODESIA NATIONAL TOURIST BOARD MAP No. 13



By road, the distance from Salisbury to Kariba town is 367 km on a fully tarred road. Follow the A1 for 290 km to Makuti and there turn left. The remaining 77 km has steeper grades and sharper curves than normal main roads and, though fully tarred, should be treated with care.

By air, Kariba is served by Air Rhodesia's daily services from Salisbury and from Victoria Falls via Wankie National Park. Light aircraft may land at Kariba, and there is also a landing strip for light aircraft at Bumi Hills.

A high speed hydrofoil service, in conjunction with a motor ferry, operates twice weekly in each direction between Kariba and Msuna 255 km away at the far western end of Lake Kariba, enabling motorists to include Victoria Falls in a circular tour of Rhodesia without retracing their route. The hydrofoil also connects with other lakeside ports of call—Bumi Hills, Sinamwenda, Sijarira, Binga and Mlibizi. At certain times of the year, a heavy build-up of Kariba weed (*Salvinia auriculata*) on the upper reaches of Lake Kariba makes it impossible for the hydrofoil to negotiate the Devil's Gorge. At these times, therefore, the scheduled service from Kariba terminates at Mlibizi instead of at Msuna.

## ACCOMMODATION

Hotels at Kariba are modern, comfortable and well-appointed, with daily rates varying from \$5.25 to \$9.50 per person. There is also a rest camp, with furnished rooms, camping facilities and a caravan site.

See "Hotels of Rhodesia", the official hotel guide, for full details of accommodation available at Kariba.

## FISHING AND GAME VIEWING

Lake Kariba is famous for its fighting tiger fish. "Kariba bream" (tilapia) makes a tasty addition to the menu—and many other fish await the angler.

There are numerous operators chartering or hiring out boats for fishing, water sport and game-viewing. Boats can also be hired from lakeside resorts.

Boat-owners and hirers are reminded that Kariba is more than just a lake, it is an inland sea. Conditions can change quickly from bright

and calm to violent tropical storms. Waves of three metres or more can occur.

Safety regulations require certain formalities and these should be checked with Lake Navigation Control before setting out on a pleasure trip.

## HEALTH

Visitors are advised to take an anti-malarial drug before visiting Kariba, during their stay, and for three weeks afterwards.

Although Kariba town is not a tsetse fly area, the surrounding country is, and persons feeling ill within a few weeks of visiting the area should inform their doctor that they have been in a tsetse area. The danger is minimal and should not be exaggerated, but neither should it be ignored.

All inshore areas of the lake should be regarded as bilharzia infested.

## STATISTICS

The capacity of the lake when full is 183 788 520 000 m<sup>3</sup>. The length from end to end is about 282 km, the maximum width 42 km and the total area about 5 230 km<sup>2</sup>. It is the largest man-made lake in the world.

The double-curvature concrete arch dam which was built to hold back the Zambezi River at Kariba has a maximum height of 128 m and a crest length of 617 m; it carries a 12 m wide road connecting Rhodesia with Zambia. The dam wall contains 974 800 m<sup>3</sup> of concrete. There are six floodgates, each 9.1 m high by 9.4 m wide, whose combined rate of discharge is 9 092 m<sup>3</sup> a second.

## INFORMATION BUREAU

The Kariba Publicity Association maintains a visitor's bureau at Kariba Service Station (P.O. Box 25: telephone 218).

## BORDER FORMALITIES

The Rhodesian and Zambian border posts on either side of the dam wall are open every day from 6 a.m. to 6 p.m. (April to September), and 6 a.m. to 7 p.m. (October to March).

Rhodesians Worldwide

# GO WELL - GO SHELL







# LAKE KARIBA WEST

MAPS AND INFORMATION REVISED SEPTEMBER 1972

RHODESIA NATIONAL TOURIST BOARD MAP No. 14



There are several resorts at the western end of Lake Kariba catering mainly for the fisherman.

## BINGA REST CAMP

Binga Rest Camp is 444 km from Bulawayo via the Victoria Falls road to Dett Crossroads, and turning right on the Kamativi Mine road. Accommodation in self-contained four-bedded chalets or double rooms with communal toilet facilities and outdoor cooking arrangements. Also caravan and camping site.

Reservations: P.O. Box 9, Telephone 11, Binga.

## MLIBIZI REST CAMP

Mlibizi is 358 km from Bulawayo, via the same route but turning off to the lake shore before reaching Binga.

Accommodation four-bedded or two-bedded chalets. Also caravan and camping site.

Reservations: Private Bag DT 5784, Dett, or radio-telephone ZEE/37 (10 to 10.30 a.m.).

## MSUNA-BY-THE-LAKE

Msuna is 72 km from Wankie town (see map), the westernmost resort on Lake Kariba.

Accommodation is in single, double or three-bedded chalets with separate kitchen facilities. Also caravan and camping site.

Reservations: P.O. Box 66, Wankie.

## ZAMBEZI-DEKA FISHING CAMP

This camp is situated at the confluence of the Zambezi and Deka rivers above the point where the Zambezi flows into Lake Kariba. It is 52 km from Wankie town on a tarred road.

Accommodation in self-contained bungalows, barbecue cooking facilities.

Reservations: P.O. Box 2, Wankie.

## TO GET THERE BY WATER

Binga, Mlibizi and Msuna are connected with Kariba town by a regular hydrofoil service operating in conjunction with a car ferry. At certain times of the year, a heavy build-up of Kariba weed (*Salvinia auriculata*) on the upper reaches of Lake Kariba makes it impossible for the hydrofoil to negotiate the Devil's Gorge. At these times, therefore, the scheduled service from Kariba terminates at Mlibizi instead of at Msuna.

## TO GET THERE BY AIR

Binga, Mlibizi and Zambezi-Deka have light aircraft landing sites.

## FISHING

Lake Kariba and the Zambezi River are famous for the fighting tiger fish. The resorts in the Kariba West area offer boats for hire and most other facilities for the fisherman.

## HEALTH

Visitors are advised to take an anti-malarial drug before visiting the area, during their stay, and for three weeks afterwards.

Part of the area is in tsetse fly country, and persons feeling ill within a few weeks of their visit should inform their doctor that they have been in a tsetse area. The danger is minimal and should not be exaggerated, but neither should it be ignored.

Inshore areas of the lake and river should be regarded as bilharzia-infested.

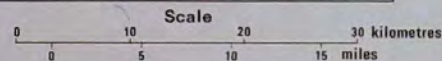
Rhodesians Worldwide

# GO WELL - GO SHELL



# LAKE KARIBA WEST

Z A M B I A



## Reference

Tarred Roads	
Strip Roads	
Gravel Roads (All weather)	
Seasonal Tracks	
Distances	
International Boundaries	
Petrol, Diesel	
National Park	
Accommodation	
Camping Caravan Sites	
Golf Courses	
National Monument	
Missions	
Tribal Trust Land	



# MATUSADONA GAME RESERVE

MAPS AND INFORMATION REVISED SEPTEMBER 1972

RHODESIA NATIONAL TOURIST BOARD MAP No. 15



This 140 000 hectare game reserve is situated on the southern shore of Lake Kariba between the Sanyati and Ume (Bumi) rivers, and can be reached by road or water.

**By road:** From the main Salisbury-Chirundu road, 8 km north of Karoi is the Karoi-Binga road and the Matusadona turn-off is 177 km from Karoi. This road is of a gravel standard and for the first 64 km runs through fairly flat Tribal Trust lands. It then passes through rugged country and crosses the Sanyati River. Good views of the surrounding country are obtained on this section of the road. From the Matusadona turn-off for 39 km to Vunduli Entrance Gate the road is usually rough and should be negotiated with care. From the entrance to Tashinga Camp is a further 39 km and the road is gravel and of a reasonable surface. It is emphasized that only 225 km of the 257-km road from Karoi to Tashinga is of a gravel standard and that it is a dry-weather route that should only be attempted by four-wheel drive vehicles or robust vanettes. There are no fuel supplies en route and adequate supplies of fuel and oil should be obtained from Karoi. At Tashinga regular petrol only is available. Internal game-viewing roads are fairly good but the tracks on to points and loops should be negotiated with great care.

**By water:** Tashinga Camp is 48 km from Kariba (course S.W.) and 8 km from Bumi Hills (course due E.). Changachirere Camp is 26 km from Kariba (course S.S.W.).

Camera Africa Safaris (P.O. Box 87, Kariba) and Kazangula Safaris (P.O. Box 3938, Salisbury) conduct organized safaris into this area on an all-inclusive basis from Kariba Airport.

## FACILITIES

A large camping site with ablution block is provided at the main Tashinga Camp, adjacent to the Warden's Office. At Changachirere Camp there is a small ablution block in the camp site. At both camps hot and cold water is available. Drinking water should be boiled. Camping equipment is available for hire and may be reserved by advance booking. Equipment includes camp beds and mattresses, tables, chairs, bucksails and gas lamps, and is available only from Tashinga Camp. Charges for camping are varied and will be given on application.

## GAME VIEWING

Herds of elephant and buffalo can be seen, especially on the loop roads. Other animals include black rhino, lion, leopard, eland, sable, roan, kudu, waterbuck, zebra, impala, bushbuck, klipspringer, warthog and hippo.

A large variety of bird life is present, especially the fish eagle and other water species.

## FISHING

There is year-round free fishing in Lake Kariba for tiger fish, tilapia (bream), vundu, barbel, hunyani salmon. Care should be exercised when fishing or game viewing close to shore as crocodiles are very active in this region.

## HEALTH NOTE

The Matusadona Game Reserve is in a tsetse fly and malarial area. Intending visitors are advised to take an anti-malarial drug; and should they feel unwell within 14 days of their visit to the area, should inform their physician of the fact that they have been in a tsetse fly region. Bilharzia snails are also present in the lake.

## RESERVATIONS AND INQUIRIES

Reservations for camping equipment and camping sites and all inquiries should be made in advance to the Central Booking Office, Department of National Parks and Wild Life Management, P.O. Box 8151, Causeway, Salisbury; telephone 26087; telegrams "PARKLIFE" Salisbury; or call at their offices in Third Street (between Jameson and Central Avenues) Salisbury, or (early in 1973) to new offices in Electra House, Jameson Avenue, Salisbury.

## PLEASE DO NOT

Annoy or tease the animals.

Travel at speeds which will disturb the animals and cause dust.

Start a grass fire with a carelessly discarded match or cigarette.

Cut or damage any trees or plants.

Hesitate to contact National Parks staff if they can be of any assistance.

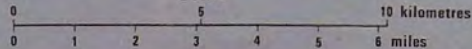
Rhodesians Worldwide

# GO WELL - GO SHELL



# MATUSADONA

Scale



## Reference

Gravel Roads

Tracks

Petrol, Diesel

High water level (485m A.S.L.)

Low water level (475m A.S.L.)



MAP No. 15



# VICTORIA FALLS NATIONAL PARK

MAPS AND INFORMATION REVISED SEPTEMBER 1972

RHODESIA NATIONAL TOURIST BOARD MAP No. 2



The Victoria Falls are near the north-west corner of Rhodesia on the Zambezi River, which for much of its length forms Rhodesia's northern border with Zambia.

The Victoria Falls Township is a kilometre from the Falls, lying within the 59 570 hectare Victoria Falls National Park, which encompasses both the great Falls and a 56 980 hectare game reserve.

The Township is 900 m above sea level and has a population of 3 390.

## THE FALLS

Width 1 700 m  
Greatest height 108 m

Annual average flow of water over the Falls is 340 000 m<sup>3</sup> a minute. The peak flood month is April and the lowest flow of water is in November.

The Devil's Cataract, Main Falls and Rainbow Falls are in Rhodesia; the Eastern Cataract is in Zambia.

Dr. David Livingstone was the first European to see the Falls. It was on November 16, 1855, during one of his missionary journeys that he first looked on the vast curtain of falling water and wrote in his diary "... scenes so lovely must have been gazed on by angels in their flight."

## HOW TO GET THERE

This 59 000 hectare national park lies on the southern bank of the Zambezi and includes the magnificent Falls themselves and a 56 000 hectare game reserve which extends 65 km upstream along the Rhodesian bank. Visitors can travel by car, driving the 440 km north-west from Bulawayo, or by air or rail, as Air Rhodesia, the national airline, and Rhodesia Railways operate scheduled services linking all main centres in Rhodesia. Inclusive "Flame Lily" holidays by air are also available.

## ROADS

The road from Bulawayo to the Falls is completely tarred, and the roads around the Falls can easily be negotiated by all types of vehicles. The game areas do not, as yet, have all-weather roads and are normally closed to traffic during the rains (approximately 1st December to 31st May).

## ACCOMMODATION

There are three hotels in the Victoria Falls Township—the Victoria Falls Hotel, the Victoria Falls Casino Hotel and Peter's Motel. The A'Zambezi River Lodge is due to open early in 1973. In the National Park there are four camps:

**Falls Camp** (in Township): one-bedroom and two-bedroom chalets with electric lighting.

**Zambezi Camp**: 6 km upstream from the Falls near the entrance to the game reserve. Lodges and cottages with electric lighting on the river bank.

**Caravan Park**: 3 km upstream from Falls near the launch sites. 60 concreted bays. Site fully illuminated. Ablution block with electric lighting; h/c water and laundry facilities to each 20 bays; firewood.

**Camping Site** (adjoining Falls Camp): Fully illuminated. Two ablution blocks with electric lighting; h/c water and laundry facilities; firewood.

**National Parks Charges**: One- or two-bedroom chalets with basic furniture, bedding, refrigerator and cooking utensils cost \$1,50 per adult nightly or \$9 per adult weekly. Cottages with a kitchen and stove, bathroom and toilet cost \$2 per adult nightly or \$12 per adult weekly. Cutlery and crockery are not provided at Falls Camp or in the cottages but are provided in the lodges at Zambezi Camp, which cost \$2,50 per adult nightly or \$15 per adult weekly. Children under the age of three years are accommodated in camps and at camping and caravan sites free of charge. Half rates are charged for children between the ages of 3 and 16.

Caravan site charges are \$1,50 per four-berth caravan and 25c per additional adult. Camping charges are 25c per adult nightly or 25c per vehicle for shorter periods.

## RESERVATIONS AND INQUIRIES

Reservations for National Parks accommodation, camping and caravan sites should be made in advance at the Central Booking Office, Department of National Parks and Wild Life Management, P.O. Box 8151, Causeway, Salisbury; telephone 26087; telegrams "PARKLIFE" Salisbury; or call at their offices in Third Street (between Jameson and Central Avenues) Salisbury, or (early in 1973) to new offices in Electra House, Jameson Avenue, Salisbury. Deposits equal to one night's accommodation are normally required.

## FACILITIES

Adjacent to Falls Camp are a fully licensed restaurant, shops where food, toilet requisites, etc., may be obtained, and a garage.

There are regular launch trips on the river, some of which stop at an island upstream for afternoon tea. Bookings can be made at the operator's offices in the Victoria Falls Township. Exciting flights over the Falls in light aircraft operated by R.U.A.C. are available. This company also offers game-viewing flights over the surrounding countryside which is rich in animal life. The company's office is in the Victoria Falls Hotel.

## GAME VIEWING

There are some 80 km of scenic and game-viewing roads in the Park. Open between May and November, depending on the condition of the roads, are the Zambezi Drive, of some 48 km along the river bank, and the Chamabonda Drive which lies in the southern part of the Park, reached from a turn-off 5 km from the Township on the road to Bulawayo. Entrance fee to each drive is \$1 per vehicle. On the Zambezi Drive, hippo, crocodile and, in the drier months elephant can be seen. On the Chamabonda Drive herds of the princely sable can be seen in large numbers, together with eland, waterbuck, kudu, giraffe and other smaller species of game.

## FISHING

The Zambezi River is famous for its tiger-fish and tilapia (bream). Fishing licences are not required.

## TOURIST INFORMATION OFFICE

An information office is situated in the National Park Headquarters office in the Township, where staff are available to provide up-to-date information on tourist matters.

## HEALTH NOTE

Intending visitors to the Victoria Falls are advised that there is still a slight risk of contracting malaria in this area but that this risk may be reduced to nil proportions by the simple precaution of taking an effective malaria prophylactic drug.

## PLEASE DO NOT

- Annoy the animals.
- Travel at speeds which will disturb the animals and cause dust.
- Start a grass fire with a carelessly discarded match or cigarette.
- Cut or damage trees or plants.
- Annoy others with a gramophone or radio.
- Leave any litter—this includes beer containers.
- Hesitate to contact National Parks staff if they can be of assistance.

# GO WELL - GO SHELL







# VICTORIA FALLS AND ENVIRONS

MAPS AND INFORMATION REVISED SEPTEMBER 1972

RHODESIA NATIONAL TOURIST BOARD MAP No. 1



The Victoria Falls are near the north-west corner of Rhodesia on the Zambezi River, which for much of its length forms Rhodesia's northern border with Zambia.

The Victoria Falls Township is a kilometre from the Falls, lying within the 59 570 hectare Victoria Falls National Park, which encompasses both the great Falls and a 56 980 hectare game reserve.

The Township is 900 m above sea level and has a population of 3 390.

## THE FALLS

Width . . . . . 1 700 m  
Greatest height . . . . . 108 m  
Annual average flow of water over the Falls is 340 000 m<sup>3</sup> a minute. The peak flood month is April and the lowest flow of water is in November.

The Devil's Cataract, Main Falls and Rainbow Falls are in Rhodesia; the Eastern Cataract is in Zambia.

Dr. David Livingstone was the first European to see the Falls. It was on November 16, 1855, during one of his missionary journeys that he first looked on the vast curtain of falling water and wrote in his diary " . . . scenes so lovely must have been gazed on by angels in their flight."

## HOW TO GET THERE

This 59 000 hectare national park lies on the southern bank of the Zambezi and includes the magnificent Falls themselves and a 56 000 hectare game reserve which extends 65 km upstream along the Rhodesian bank. Visitors can travel by car, driving the 440 km north-west from Bulawayo, or by air or rail, as Air Rhodesia, the national airline, and Rhodesia Railways operate scheduled services linking all main centres in Rhodesia. Inclusive "Flame Lily" holidays by air are also available.

## ROADS

The road from Bulawayo to the Falls is completely tarred, and the roads around the Falls can easily be negotiated by all types of vehicles. The game areas do not, as yet, have all-weather roads and are normally closed to traffic during the rains (approximately 1st December to 31st May).

## ACCOMMODATION

There are three hotels in the Victoria Falls Township—the Victoria Falls Hotel, the Victoria Falls Casino Hotel and Peter's Motel. The A'Zambezi River Lodge is due to open early in 1973. In the National Park there are four camps:

**Falls Camp** (in Township): one-bedroom and two-bedroom chalets with electric lighting.

**Zambezi Camp:** 6 km upstream from the Falls near the entrance to the game reserve. Lodges and cottages with electric lighting on the river bank.

**Caravan Park:** 3 km upstream from Falls near the launch sites. 60 concreted bays. Site fully illuminated. Ablution block with electric lighting; h/c water and laundry facilities to each 20 bays; firewood.

**Camping Site** (adjoining Falls Camp): Fully illuminated. Two ablution blocks with electric lighting; h/c water and laundry facilities; firewood.

**National Parks Charges:** One- or two-bedroom chalets with basic furniture, bedding, refrigerator and cooking utensils cost \$1,50 per adult nightly or \$9 per adult weekly. Cottages with a kitchen and stove, bathroom and toilet cost \$2 per adult nightly or \$12 per adult weekly. Cutlery and crockery are not provided at Falls Camp or in the cottages but are provided in the lodges at Zambezi Camp, which cost \$2,50 per adult nightly or \$15 per adult weekly. Children under the age of three years are accommodated in camps and at camping and caravan sites free of charge. Half rates are charged for children between the ages of 3 and 16.

Caravan site charges are \$1,50 per four-berth caravan and 25c per additional adult. Camping charges are 25c per adult nightly or 25c per vehicle for shorter periods.

## RESERVATIONS AND INQUIRIES

Reservations for National Parks accommodation, camping and caravan sites should be made in advance at the Central Booking Office, Department of National Parks and Wild Life Management, P.O. Box 8151, Causeway, Salisbury; telephone 26087; telegrams "PARKLIFE" Salisbury; or call at their offices in Third Street (between Jameson and Central Avenues) Salisbury, or (early in 1973) to new offices in Electra House, Jameson Avenue, Salisbury. Deposits equal to one night's accommodation are normally required.

## FACILITIES

Adjacent to Falls Camp are a fully licensed restaurant, shops where food, toilet requisites, etc., may be obtained, and a garage.

There are regular launch trips on the river, some of which stop at an island upstream for afternoon tea. Bookings can be made at the operator's offices in the Victoria Falls Township. Exciting flights over the Falls in light aircraft operated by R.U.A.C. are available. This company also offers game-viewing flights over the surrounding countryside which is rich in animal life. The company's office is in the Victoria Falls Hotel.

## GAME VIEWING

There are some 80 km of scenic and game-viewing roads in the Park. Open between May and November, depending on the condition of the roads, are the Zambezi Drive, of some 48 km along the river bank, and the Chamabonda Drive which lies in the southern part of the Park, reached from a turn-off 5 km from the Township on the road to Bulawayo. Entrance fee to each drive is \$1 per vehicle. On the Zambezi Drive, hippo, crocodile and, in the drier months elephant can be seen. On the Chamabonda Drive herds of the princely sable can be seen in large numbers, together with eland, waterbuck, kudu, giraffe and other smaller species of game.

## FISHING

The Zambezi River is famous for its tiger-fish and tilapia (bream). Fishing licences are not required.

## TOURIST INFORMATION OFFICE

An information office is situated in the National Park Headquarters office in the Township, where staff are available to provide up-to-date information on tourist matters.

## HEALTH NOTE

Intending visitors to the Victoria Falls are advised that there is still a slight risk of contracting malaria in this area but that this risk may be reduced to nil proportions by the simple precaution of taking an effective malaria prophylactic drug.

## PLEASE DO NOT

Annoy the animals.

Travel at speeds which will disturb the animals and cause dust.

Start a grass fire with a carelessly discarded match or cigarette.

Cut or damage trees or plants.

Annoy others with a gramophone or radio.

Leave any litter—this includes beer containers.

Hesitate to contact National Parks staff if they can be of assistance.

# GO WELL - GO SHELL

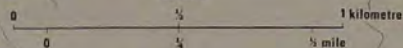


Shell



# VICTORIA FALLS AND ENVIRONS

Scale

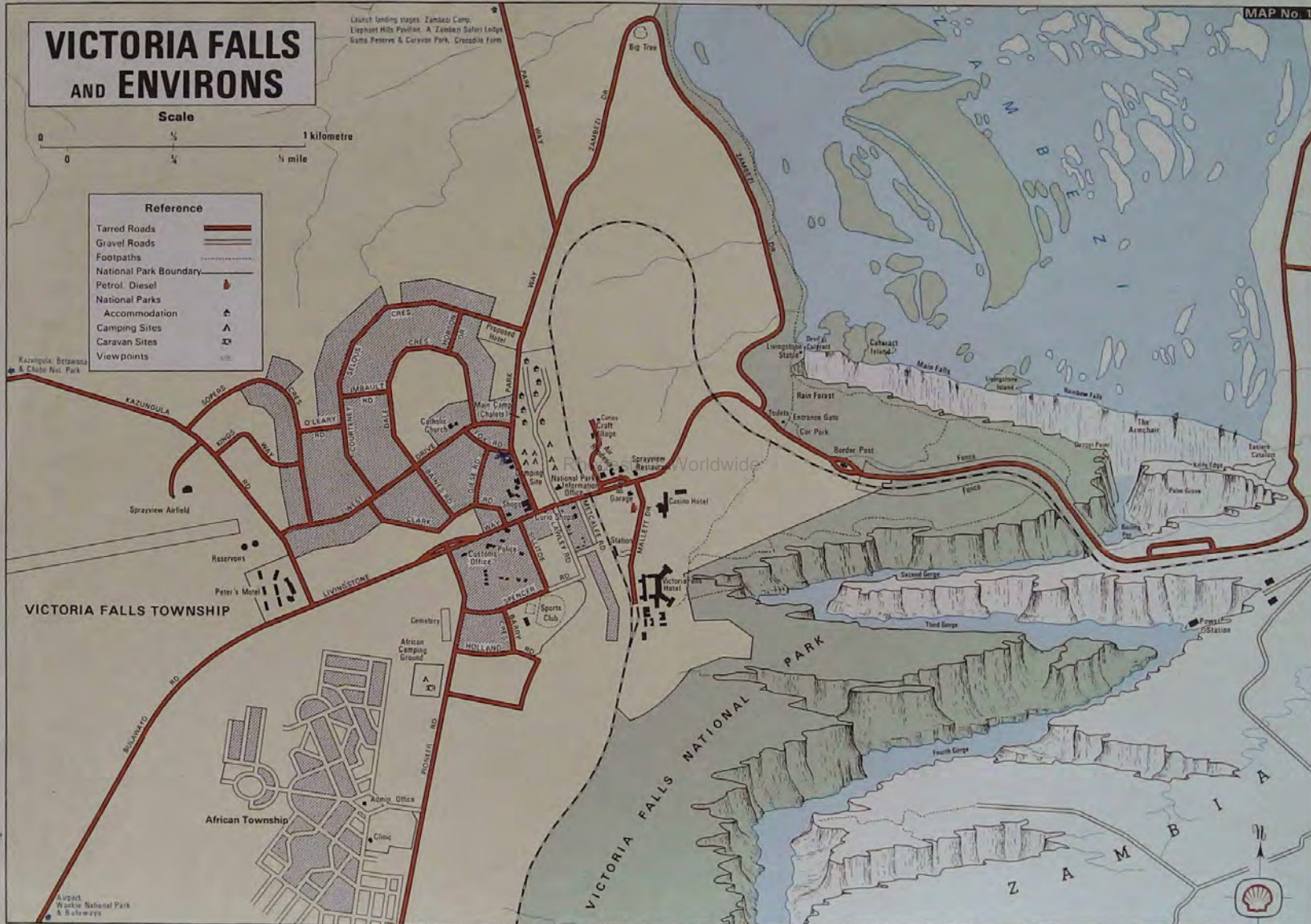


## Reference

- Tarred Roads
- Gravel Roads
- Footpaths
- National Park Boundary
- Petrol, Diesel
- National Parks
- Accommodation
- Camping Sites
- Caravan Sites
- Viewpoints

Launch landing stages, Zambezi Camp,  
Elephant Hills Pavilion, A. Zambezi Safari Lodge,  
Guns, Petreus & Curlew Park, Crossed Farm

MAP No. 1





# WANKIE NATIONAL PARK

MAPS AND INFORMATION REVISED SEPTEMBER 1972

RHODESIA NATIONAL TOURIST BOARD MAP No. 3



This is Rhodesia's greatest game reserve, where 1.4 million hectares of bushland is the home of more than 80 species of mammals. Here are some of the greatest concentrations of wild elephant in the world, where herds of buffalo up to 1 500 strong may be seen, and where the visitor is confronted with the rich variety of Rhodesia's wild life, while also enjoying the amenities and facilities of civilization.

## HOW TO GET THERE

**By Road:** There are access roads to the park's three camps from the main Bulawayo-Victoria Falls highway. The entry fee into the park is \$2 per adult (25c for children aged between 3 and 16). These fees cover any number of entries the visitor may make during the course of 10 days.

**Main Camp:** 264 km north of Bulawayo, a tarred access road leads for 24 km to the camp; 174 km south of the Victoria Falls another access road, via Dett, leads for 40 km to the camp.

**Sinamatella Camp:** From Wankie Township, 106 km south of Victoria Falls and 333 km north of Bulawayo, the gravel access road leads for 48 km to the camp.

**Robins Camp:** 50 km south of Victoria Falls and 390 km north of Bulawayo, the gravel access road leads for 69 km via Matsi, to the camp. This camp is closed during the rainy season—from 1st November to 1st May.

**By Air:** Air Rhodesia operate scheduled services from Bulawayo, from Victoria Falls and from Salisbury, via Kariba, landing at Wankie National Park Aerodrome and include the park in their all-inclusive "Flame Lily" holiday tours.

**By Rail:** Trains from Victoria Falls and Bulawayo stop at Dett station, 24 km from the Main Camp. Transport to the park is available from the station by prior arrangement with the Manager, United Touring Company, Wankie National Park Aerodrome.

## ROADS

The Bulawayo-Victoria Falls highway is tarred for its whole length, while in the park itself there is an 80 km tarred road between Main Camp and Shumba picnic site. The remaining game-viewing roads are either sand or gravel, easily negotiated by all types of vehicles. Motor coaches with a carrying capacity of over 15 passengers, vehicles weighing over 2 273 kg, and cars towing caravans or trailers are not allowed to travel on game-viewing roads within the park.

The number of motor vehicles within the park is limited at any one time to 350.

## ACCOMMODATION

All accommodation has electric, gas or paraffin lighting, and basic furniture, with baths and water-borne sanitation within or in ablution blocks near by. Open-air cooking facilities are available, except in the case of the cottages at Main Camp.

**Main Camp** has chalets, cottages and semi-detached, self-contained lodges with kitchens, camping site, and a caravan park.

**Sinamatella Camp** has self-contained cottages and lodges, and a caravan and camping site.

**Robins Camp** has 2-bedroomed and 1-bedroomed chalets, all of which have electric light from 5 p.m. to 10 p.m. There is also a caravan site and a camping site. Eleven kilometres west of Robins Camp, at Nantwich, there are three lodges.

Minimum accommodation charges per adult are as follows: Chalets, with cooking utensils, bedding and refrigerators: \$1,50 nightly or \$9 weekly; Cottages, with cooking utensils, bedding and refrigerators: \$2 nightly or \$12 weekly; Lodges, with bedding, cutlery, crockery, cooking utensils, and the services of a servant: \$2,50 nightly or \$15 weekly. Caravan and camping site fees are 25c nightly or, for longer periods 25c per vehicle. In all cases children between the ages of 3 and 16

years are charged at half rates. Caravan park charges at Main Camp are \$1 per four-berth caravan and 25c per additional person.

## FACILITIES

Each camp has a licensed restaurant, a petrol filling station, and a store which sells food-stuffs, liquor, curios, and a selection of black-and-white and colour film. At Wankie National Park Aerodrome the United Touring Company has on hire a fleet of micro-buses specially adapted for game-viewing. Campers and caravanners have the use of all camp facilities.

## GAME VIEWING

Cars leaving camp on game-viewing drives must register on leaving, and return by the times stated in the notice at the entrance gate. Visitors benefit themselves by obeying these rules, as stranded vehicles can then be readily traced. A speed limit of 40 km/h applies to all vehicles, and the visitors will see more game by proceeding slowly, as the natural camouflage of the animals is most effective. At Nyamandhlovu and Guvalala pans, game-viewing platforms have been built and, provided they proceed immediately on to these platforms, visitors may leave their cars, and obtain fine views of herds coming to water. The best time for game-viewing is early morning and late afternoon, out of the heat of the day. Visitors MUST NOT leave their cars, except at clearly demarcated areas such as the pans mentioned above, or at Shumba, Detema, Mandavu, and Ngwasha picnic sites.

## RESERVATIONS AND INQUIRIES

Reservations for National Parks accommodation, including camping and caravan reservations should be made in advance at the Central Booking Office, Department of National Parks and Wild Life Management, P.O. Box 8151, Causeway, Salisbury; telephone 26087; telegrams "PARKLIFE" Salisbury; or call at their offices in Third Street (between Jameson and Central Avenues) Salisbury, or (early in 1973) to new offices in Electra House, Jameson Avenue, Salisbury. Deposits equal to one night's accommodation are normally required.

All other inquiries should be directed to the Tourist Officer of the camp concerned:

Main Camp, Wankie National Park, Private Bag DT 5776, Dett. Phone: Dett 64.

Robins Camp, Wankie National Park, Private Bag WK 5936, Wankie. Phone: Wankie 70216.

Sinamatella Camp, Wankie National Park, Private Bag WK 5941, Wankie. Phone: Wankie 70022.

## PLEASE DO NOT

Bring firearms or dogs into the park.

Annoy the animals.

Travel at speeds exceeding 40 km/h which would disturb the animals and cause dust.

Start a grass fire with a carelessly discarded match or cigarette.

Loiter before proceeding on to viewing platforms.

Cut or damage trees or plants.

Annoy others with a gramophone or radio.

Leave any litter—this includes beer containers.

Hesitate to contact National Parks staff if they can be of any assistance.

## ROAD CLOSURES

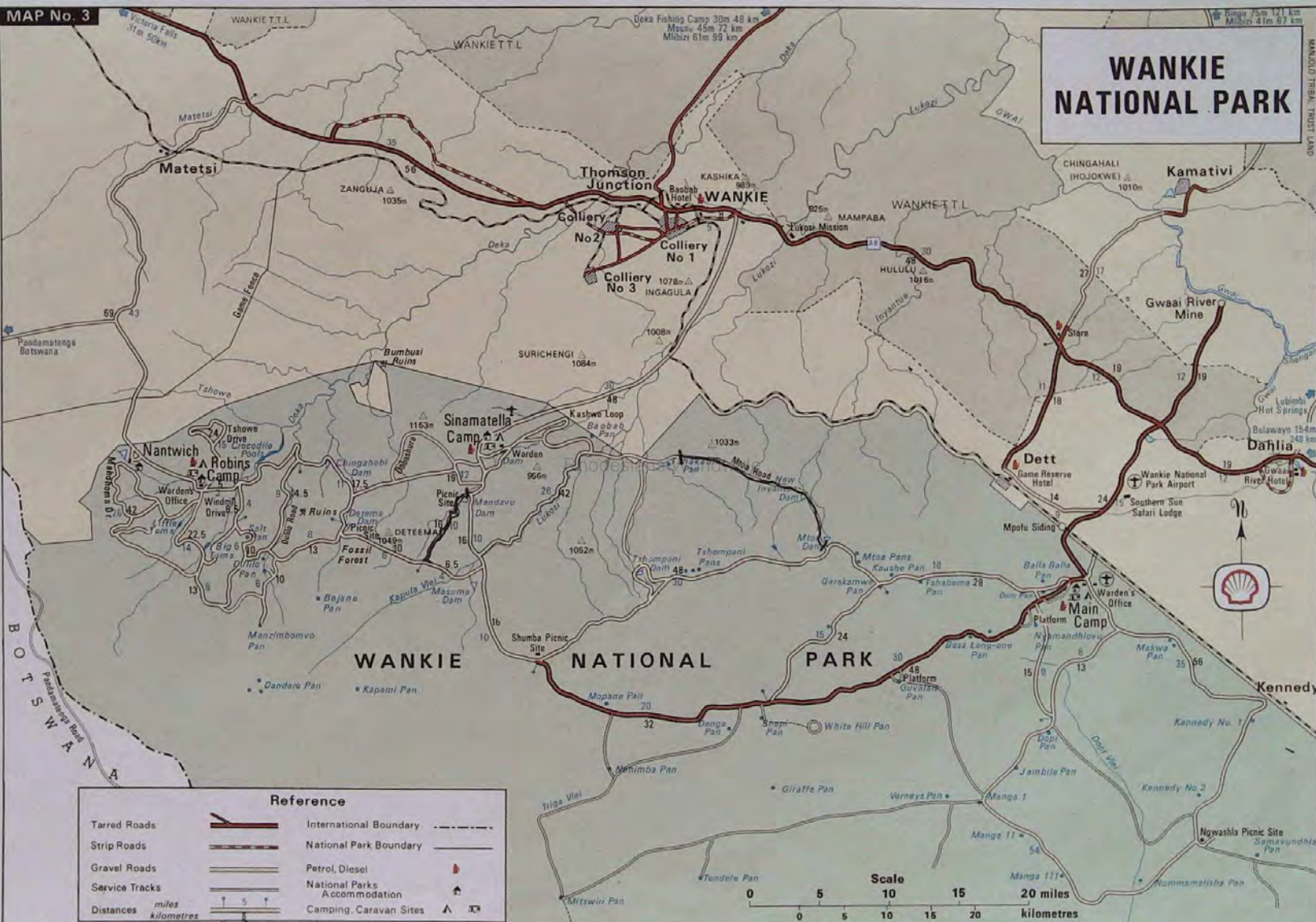
Due to weather conditions it may be necessary to close roads within the park on occasions. This can only be done locally, and the Tourist Officer at your point of entry will advise you on road conditions.

# GO WELL - GO SHELL





# WANKIE NATIONAL PARK





## VICTORIA FALLS

Scale

0 0.5 1 km

Z A M B I A

### Reference

### Tarred Roads

Gravel Roads

Tracks (seasonal)

Distances (kilome

### Footpaths

National Park

International

Boundary

Rest Camp

Accommoda

Camping Sites  
Cassara Park

View Point

INSET

Scal

10

## VICTORIA FALLS

NATIONAL PARK

### Victoria Falls

VICTORIA FALLS TOWNSHIP

### African Township

A map of the Victoria Falls National Park area. The map shows the Victoria Falls and the surrounding landscape. The text 'VICTORIA FALLS NATIONAL PARK' is visible on the map.

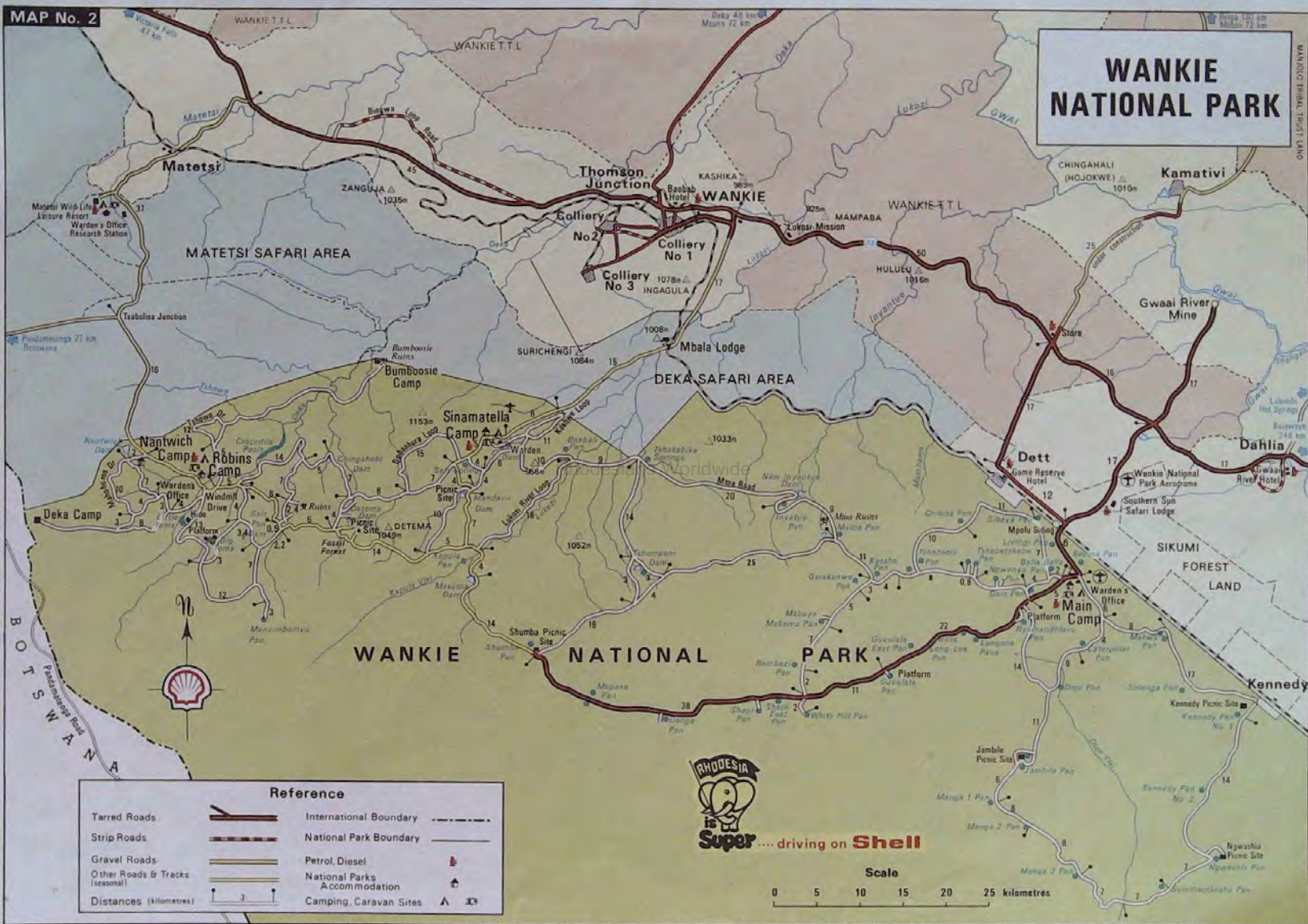
1 Tourist Information  
2 Town Council & Rest Camp Offices

Revised December, 1978

Mapwork by M. O. Collins (Pvt.) Ltd. Compiled from State Copyright Mapping with the permission of the Surveyor General. Copyright Reserved. Produced by the Rhodesia National Tourist Board. Printed by the Government Printer.



# WANKIE NATIONAL PARK







# MIDLANDS AREA

## Reference

- Tarred Roads
- Strip Roads
- Gravel Roads
- Distances miles
- Distances kilometres
- Petrol, Diesel
- National Monuments
- Golf Courses
- Missions
- Camping Site
- Caravan Site
- National Parks
- Accommodation
- Tribal Trust Land
- African Purchase Land



# BULAWAYO AREA

MAPS AND INFORMATION REVISED SEPTEMBER 1972

RHODESIA NATIONAL TOURIST BOARD MAP No. 4

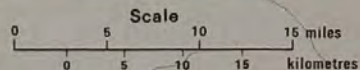


# GO WELL - GO SHELL





# BULAWAYO AREA



## Reference

