

Caravaning in Rhodesia





Left: The Victoria Falls, Africa's greatest natural wonder, where the 1 700-metre-wide Zambezi River hurtles 100 metres into a dark ravine. It is a sight that once witnessed is never forgotten, for the visitor may view the whole length of the Falls from the Rain Forest. Nearby is a 58 000-hectare game reserve bordering the river above the Falls.

Below: Salisbury offers the visitor everything he would expect of a capital city. There is much to do and see in and around the city during the day, and the night-life is gay and varied. The wide streets lined with jacarandas, spathodeas, flamboyants and other flowering trees are flanked with tall, modern buildings that give Salisbury its progressive, contemporary atmosphere.



Above: The National Parks caravan park at Victoria Falls is of above-average standard, with individual concreted bays and extensive, well-appointed ablution blocks. It is situated on the banks of the Zambezi River, within ear-shot of the thunder of the Falls.



Look for the blue "Rest" signs on Rhodesia's roads. They herald shady lay-bys, where concrete benches, tables and braai grates are provided for the traveller to make a stop for a cool drink or lunch



by

CLIVE WILSON

Editor, Rhodesian Caravaner



A GROWING number of visitors to Rhodesia are opting out of the "jet-age" holiday rush, applying the sound principle that travelling itself is as enjoyable as arriving at a destination.

They are caravanners, who believe with the poet that: "*What is this life if, full of care, we have no time to stand and stare.*" In Rhodesia, particularly, it is not difficult to appreciate the enthusiasm for their particular style of holiday.

Journeying at a relaxed, leisurely pace, they can truly appreciate the beauty that borders most of Rhodesia's roads: the msasa trees in their spring livery, their glossy leaves glowing with reds, browns, olives and varying greens; wide vistas of open plains clothed with tawny grass; and high kopjes of tumbled stones, coloured by bright lichens or the tones of the afternoon sun.

Rhodesia is an ideal country for the caravanner. The climate is temperate, there are none of the strong winds that plague the coastal traveller, and the hills are conspicuous by their absence, except, of course, in the lovely Eastern Mountains. Even here the wide tarred roads linking the various centres are well constructed and sensibly cambered. Christmas Pass, the gateway to Umtali, is perhaps the steepest pass in the country, and is an impressive double highway, with wide curves, enabling the towing car to maintain a good pulling speed.

Near the top of the pass, on its eastern side, is the Umtali municipal caravan park, with wide views over the town and the surrounding mountains. Here one can unhitch and explore the nearby Vumba Mountains, with their beautiful

garden national park. From Umtali a fine scenic highway also leads to the Rhodes-Inyanga National Park.

Despite the high standard of the road system in Rhodesia, caravaners normally, do not wish to travel too far each day. In Rhodesia this is certainly not necessary, for the places of major tourist appeal—the Victoria Falls, Wankie National Park, the Matopos, the Zimbabwe Ruins, Kariba, Salisbury, and the Eastern Highlands—can all be visited in turn without driving over 350 km a day.

And it is not always necessary to travel so far, for there are many smaller national parks and other places of interest in between the most famous attractions.

Wherever one travels the journey is a pleasant one, for Rhodesia's roads are notably free from heavy traffic. A thoughtful Ministry of Roads have also provided signposted lay-bys along main routes, usually under the shade of large trees, where the traveller can pull off the road. Stone tables, benches and braai-plates have been erected, and they are ideal spots for an *al fresco* lunch or a short stop for a cool drink.

In Rhodesia the visitor will find a vigorous Rhodesian Caravan Association and local regions of the Caravan Club of Southern Africa. Rallies are held regularly, and the visitor will always be assured of a warm welcome should he wish to join in.

The expansion of caravanning in Rhodesia has been made possible by the country's extensive network of well-engineered tarred roads between tourist centres and cities, and by the numerous caravan parks that have been established.

The steady growth of parks, conveniently spaced along tourist routes, and in almost all national parks, has enhanced the reputation of Rhodesia as a holiday destination for caravaners in central and southern Africa. All the parks have good basic amenities, while some, Bulawayo notably, are positively luxurious.

Situated in the heart of a city park and adjacent to a magnificent swimming pool, Bulawayo's park is one of Southern Africa's finest.

In the mountainous Rhodes-Inyanga National Park the parks are within walking distance of a natural swimming pool, trout streams, a hotel with historical

associations with Cecil Rhodes, and an interesting nine-hole golf course.

For caravaners intent on seeing some of the huge populations of big game that Rhodesia possesses, there are three parks in the Wankie National Park alone, each close to a licensed restaurant and general shop. There are also other caravan parks in national parks where there are wild animals present in large numbers, where the visitor is within earshot of the strange cries and sounds of the African night.

At the Victoria Falls, by contrast, all sounds at night are stilled by the constant roaring of the 1 700-metre-wide Falls, a short distance from the luxury park.

Kariba, the premier location for exciting angling for the striped tiger-fish, can be reached from Salisbury quickly and conveniently. The journey of 370 kilometres is on full-width, tarred roads.

For the South African caravaner the main entry point is Beitbridge, although a coastal road is now open

from Lourenco Marques to Beira in Mocambique, which provides an alternative route, entering Rhodesia at Umtali.

Traffic from Zambia normally enters Rhodesia at Chirundu or Victoria Falls. An interesting alternative route is via Kariba, for it affords the caravaner an opportunity to drive his combination across the 129-metre-high dam wall itself.

From Mocambique one can enter at Nyamapanda from the north, or Umtali from the central part of the country.

Whether bound for the bright lights of the cities, or the beauties of the scenery and the excitement of wild life in the wide-open spaces, the caravaner in Rhodesia is well catered for. Along the route, petrol stations are conveniently situated, and should a mechanical mishap occur, he is never far from help. The Automobile Association is represented in all centres, and their services are available to members from outside Rhodesia.

Caravan parks in Rhodesia

THE following is not a complete list of all the parks in Rhodesia, but it includes those that will be of most use to the touring caravaner, and is approved by the Rhodesian Caravan Association. "Full ablution facilities" is a general term which indicates that hot and cold water, toilets, baths and showers are provided.

BEITBRIDGE

DOORSTEP CARAVAN PARK. Full ablution facilities. Restaurant with store, swimming pool, laundry facilities. Hotel and service station nearby. Dogs allowed.—P.O. Box 53, Beitbridge.

BINDURA

COACH HOUSE INN L.** Full ablution facilities. Swimming pool. Dogs allowed.—P.O. Box 138, Bindura.

BUBYE

LION & ELEPHANT MOTEL L*. 20 sites, ablution facilities. 77 km from Beitbridge.—P. Bag 9035, Fort Victoria.

BULAWAYO

CENTRAL PARK CARAVAN PARK. In city's park. Full ablution and laundry facilities, electric and TV points. Stores and service

station nearby.—c/o City Engineer's Dept. P.O. Box 1353, Bulawayo.

BULAWAYO DISTRICT

HERMIT'S PEAK GUEST HOUSE. (U) 46 km from Bulawayo on Matopos road. Full ablution block. Swimming pool. Dogs allowed.—P. Bag K5152, Bulawayo.

RHODES MATOPOS NATIONAL PARK. Site at Maleme Dam is 54 km from Bulawayo, while Mtshellele, Mpopoma and Toghwana are further within the park.

Maleme Camp: caravan and camping site. Mpopoma Dam: caravan and camping site (boil drinking water). Mtshellele Dam: caravan and camping site (boil drinking water). Toghwana Dam: caravan and camping site (boil drinking water). Arboretum: caravan and camping site (boil drinking water)—P. Bag K.5142, Bulawayo.

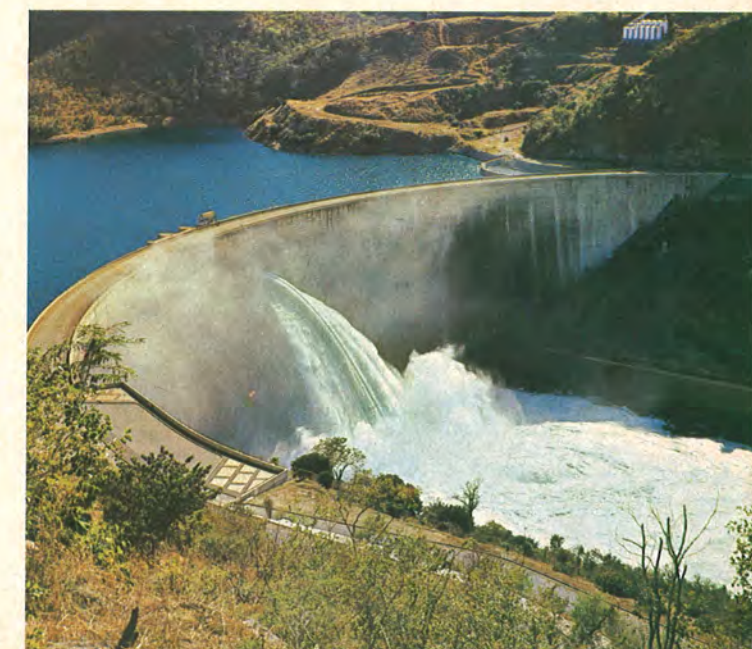
WILLOW PARK. 29 km from city on Essexvale Road. Outdoor kitchenettes, full ablution facilities,

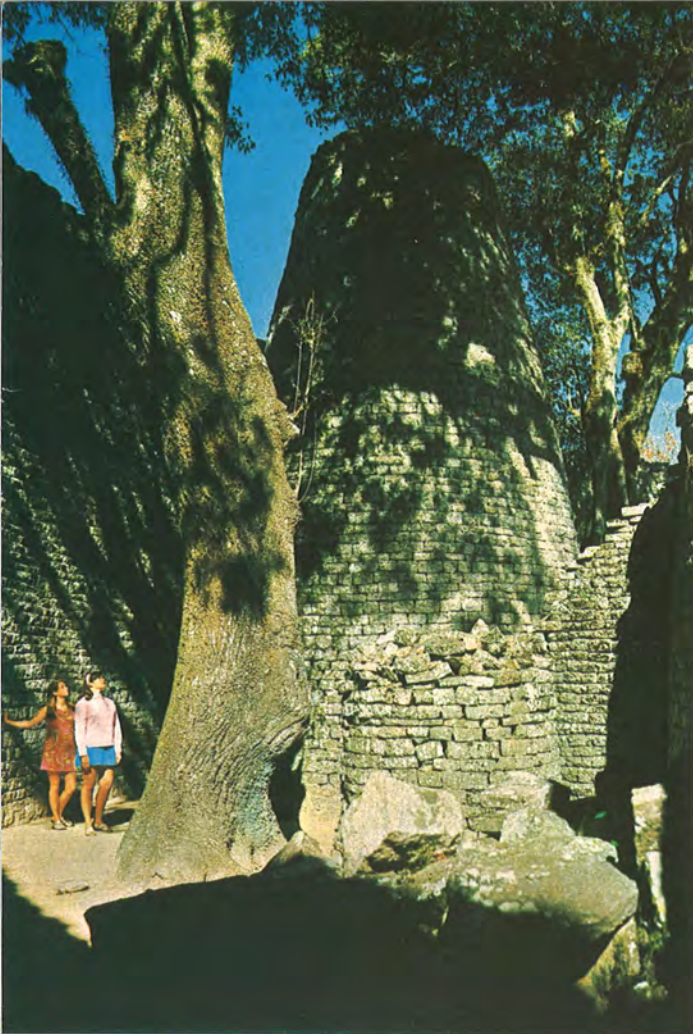
The world-famous Wankie National Park is only one of the many game reserves in Rhodesia with caravan parks. On uncrowded game-viewing roads, the visitor may see a wide range of wild life, but Wankie is justly famous for its large elephant population, which are best seen at the many waterholes, some of which have viewing platforms.

Below: Kariba is world famous for the quality of its fishing, particularly for the ferocious, long-toothed tiger-fish (*Hydrocynus vittatus*), which grow to 30 lb. Bream, chessa, nkupi, and the giant cat-fish, the vundu, which grows up to 100 lb., are some of the other species which are present in large numbers. Boating companies at Kariba offer full facilities, including the hire of tackle, for fishing trips.



Below: The 129-metre-high dam wall at Kariba is a major technological achievement. Behind the slim concrete wall extends a 5 100-square-kilometre lake, along the shores of which tourist resort establishments have been created. They offer facilities for boating, water-skiing, and fishing. Near the town of Kariba game-viewing is excellent, as the waters of the lake attract many types of animal, including elephant.





Below: Near historic Fort Victoria, the first European town in Rhodesia, and the Zimbabwe Ruins, is Lake Kyle. On the northern shore is a 7 500-hectare game park stocked with a wide variety of antelope species and white rhino. Within the game park is a National Parks caravan park, and on the southern shore are four commercial caravan parks.



Above: The ancient walls of Zimbabwe pose a fascinating riddle to all who walk among the passages of this immense ruin. In the Temple, and on the high Acropolis, the ingenuity of the builders—whoever they were—is vividly apparent. Near the ruins is a museum and Karanga village showing how the local tribes lived in the 19th century.

Right: Rhodesia's road system is comprehensive and well-engineered. The visitor towing a caravan may travel safely and swiftly between the centres of major tourist interest on full-width, tarred highways. Petrol stations are conveniently situated along the tourist routes.



Gwelo. Full ablution facilities. Fishing, boating, store.—P.O. Box 796, Gwelo.

HOT SPRINGS

HOT SPRINGS RESORT L. Eighty-four km south of Umtali, on Birchenough Bridge road. Adjacent to resort with pools fed by natural hot springs. Full ablution and resort facilities. Bar, restaurant, store, petrol on site. Dogs allowed.—P. Bag C7316, Umtali.

INYANGA

RHODES INYANGA NATIONAL PARK. Mare Caravan Park, within 2 km of Warden's Office. Full ablution facilities. Near natural swimming pool, hotel, golf course, trout fishing. Stores and service station facilities at Inyanga Township, 9,5 km from Warden's Office.—P. Bag T.7901, Umtali.

STAFFIN HOLIDAY FARM. 66 km from Rusape on Inyanga road. Full ablution facilities. Servants available.—P.O. Juliasdale.

KARIBA EAST

CARIBEA BAY. 3 km from Kariba Township. Full ablution facilities. Licensed restaurant, bar, shop, discotheque, swimming pool. Opening May, 1975 — Central Reservations Office, Southern Sun Corp., P.O. Box 327, Salisbury.

NYANYANA. National Parks site. 24 km from Kariba Township. Full ablution facilities. — P.O. Box 76, Kariba.

KARIBA WEST

BINGA REST CAMP L(NYG). 154 km from Vic. Falls/Bulawayo highway. Full ablution facilities. Store, petrol and service station. Warm spring swimming pool. Crocodile farm. Boat hire. Dogs allowed.—P.O. Box 9, Binga.

MLIBIZI HOTEL L(NYG) 97 km from Vic. Falls/Bulawayo highway. Full ablution facilities. Licensed restaurant. Fishing, boating, water skiing, swimming pool — P.Bag DT5784, Dett.

MELSETTER

LINDLEY WEST CARAVAN PARK. Overlooking Chimanimani Mountains, 3 km from Melsetter

village. Full ablution facilities. Farm produce available. Shops and petrol in village.—P.O. Melsetter, via Umtali.

CHIMANIMANI NATIONAL PARK. Base Camp: at foot of mountains 21 km from Melsetter on gravel road.—P. Bag 2063, Melsetter.

QUE QUE & DISTRICT

QUE QUE CARAVAN PARK. Full ablution and laundry facilities. Store and service station nearby. No dogs.—Gokwe Road, P.O. Box 402, Que Que.

SEBAKWE NATIONAL PARK. Fifty-four km from Que Que on Umvuma road. Full ablution facilities. Year round fishing.—P.O. Box 636, Que Que.

RUPISI

RUPISI HOT BATHS. 56 km south of Chipinga. Caravan and camping park under construction.—P.O. Box 28, Chipinga.

RUSAPE

MAKONI CARAVAN PARK. Ablution block, electric points.—P.O. Box 17, Rusape.

SALISBURY

CORONATION PARK. Six km from centre of city on Umtali road. Full ablution facilities. Laundry facilities. Store and petrol nearby. Dogs on leashes allowed.—c/o Amenities Department, Salisbury Municipality, P.O. Box 1364, Salisbury.

JACARANDA CARAVAN PARK. Seven km from city on Beatrice Road. Full ablution facilities. Laundry facilities, swimming pool, t.v. lounge. Electric points, public phone box, caravans for hire on site. Servants' accommodation for visitors from outside Rhodesia. Dogs on leash allowed. Hotel, stores and garages nearby.—P.O. Box 3039, Salisbury.

SALISBURY DISTRICT

DAWN VIEW CARAVAN PARK. 9,6 km from Salisbury on Bulawayo road. Full ablution facilities, swimming pool. — P.O. Box M.191, Mabelreign, Salisbury.

LAKE SIDE CARAVAN PARK. 32 km from Salisbury on shore of

Lake McIlwaine.

Full ablution and laundry facilities, swimming pool, children's playground, security fenced, electric points, fully lawned. Hotel and service station nearby.—P.O. Box 2628, Salisbury.

RHOCARA CARAVAN PARK. 32 km from Salisbury in McIlwaine National Park.

Open only to R.C.A. and affiliated club members.

Swimming pool, 2 full ablution blocks, recreation building, tuck shop. No servants. Dogs only under strict control.—P.O. Box 8469, Causeway.

ROBERT McILWAINE NATIONAL PARK. Forty km from city on shores of Lake McIlwaine. Two sites with full ablution facilities, one within Game Park on south bank (no dogs), the other on north bank (dogs under control allowed). Service station, hotel, boats for hire on north bank. Year-round fishing. Firewood must be provided by caravanners.—P. Bag 962, Norton.

SELOUS

DEWDROP INN CARAVAN PARK. Adjacent to hotel, sports club and garage. Full ablution and laundry facilities, electric and shaving points. Swimming pool. Stores nearby. Dogs on leash allowed.—P.O. Box 9, Selous.

SELUKWE

FERNY CREEK CARAVAN PARK. Two km north-east of Selukwe. Full ablution facilities. Laundry facilities. Electricity and hot water. Swimming pool. Children's playground.—c/o The Secretary, Gwelo/Selukwe Rural Council, P.O. Box 125, Selukwe.

SHABANI

SHABANI CARAVAN PARK. 30 caravan sites, full ablution and laundry facilities.—Shabani Town Board, P.O. Box 5, Shabani.

SINOIA

ORANGE GROVE MOTEL L.** 3,25 ha site, with full ablution facilities. Swimming pool and sauna. Games room.—P.O. Box 436, Sinoia.

SINOIA CAVES NATIONAL PARK. Eight km north of Sinoia at site of famous and beautiful caves.

Full ablution facilities. Dogs under control allowed. Service station at site. Adjacent to motel with swimming pool.—P.O. Box 193, Sinoia.

UMTALI

FIESTA PARK HOLIDAY AND CARAVAN PARK (P). 3 km from Umtali on Beira Road. 100 sites with electric points. A la carte restaurant. Modern ablution block, laundry. Swimming pool, children's playground, putt-putt course. Dogs on leash allowed.—P.O. Box 540, Umtali.

MUNICIPAL CARAVAN PARK. Five km from town and one mile from crest of Christmas Pass. Full ablution and laundry facilities. Electric and shaving points. Stores, hotels, restaurants, garages, in town. Advance bookings accepted.—c/o P.O. Box 91, Umtali.

UMTALI DISTRICT

LAKE ALEXANDER CARAVAN PARK. Forty-eight km from Umtali on tarred road. Full ablution facilities. Lake stocked with rainbow trout.—P.O. Box 441, Umtali.

PENHALONGA CARAVAN PARK. Seventeen km from Umtali on Penhalonga road. Full ablution facilities. Swimming pool. Store, post office, and service station nearby. Operated by Rhodesian Caravan Association.—P.O. Box 3073, Umtali.

SABI STAR HOLIDAY RESORT. 45 km from Umtali on Melsetter road. Full ablution and laundry facilities. Swimming pool, recreation facilities for children. Dogs under control allowed. Fresh farm produce.—P.O. Box 634, Umtali.

WARNHAM PARK HOLIDAY CAMP (P). Twenty-six km from Umtali on Salisbury road. Full ablution facilities. Heated swimming pool, nine-hole mashie golf course, trampoline, beer garden. Store and restaurant on site, and service station within 6 km. Servants' accommodation. Dogs allowed.—P.O. Box 610, Umtali.

VICTORIA FALLS

VICTORIA FALLS NATIONAL PARK. Zambezi Camp. 6,5 km upstream from Falls. Full ablution facilities. Laundry facilities. Concreted sites. Stores, restaurants, garage within two miles.—P. Bag

5920, Victoria Falls.

VICTORIA FALLS REST CAMP AND CARAVAN PARK. Within Victoria Falls village. Caravan sites for 60. Ablution blocks and laundry.—P.O. Box 41, Victoria Falls.

VICTORIA FALLS DISTRICT

MATETSI WILD LIFE LEISURE RESORT L-. 50 km south of Victoria Falls on main Bulawayo road, turn off at Pandamatenga road, then turn off at signposted 21 km peg. Swimming pool, children's bush playground and other sporting amenities. Supermarket and curio store, petrol station. Game-viewing in season. Servants' accommodation. Dogs allowed.—P.O. Box 160, Victoria Falls.

VUMBA

VUMBA NATIONAL PARK. Thirty-two km from Umtali on steep, winding road. Full ablution facilities. Swimming pool, store nearby.—P. Bag V7472, Umtali.

WANKIE NATIONAL PARK

MAIN CAMP. Two hundred and eighty-eight km from Bulawayo. Full ablution facilities. Licensed restaurant, store, petrol. No dogs. Open all year round.

SINAMATELLA CAMP. Forty-eight km from Wankie town, via Lukosi. Full ablution facilities. Licensed restaurant, store, petrol. No dogs allowed. Open all year round.

ROBIN'S CAMP. One hundred and fifteen km from Victoria Falls, via Lukosi. Full ablution facilities.

Licensed restaurant, store, petrol. No dogs allowed. Open between 1st May and 31st October, weather permitting.

Cars towing caravans may only use those roads which offer the shortest routes to the caravan sites, and are prohibited from using all other park roads. Driving only permitted between sunrise and sunset.—P. Bag DT.5776, Dett.

WANKIE DISTRICT

GAME RESERVE HOTEL L-. 22 km from Wankie National Park. Table d'hôte and lunch a la carte; swimming pool, games room, dogs allowed. Ablution facilities.—P.O. Box 43, Dett.

GWAAI RIVER HOTEL L*. 38 km from Wankie National Park on Victoria Falls road. Ablution facilities. Swimming. Children's playground, game drives. Dogs allowed.—P.O. Dett.

HALFWAY HOUSE HOTEL L-. 222 km from Bulawayo on Victoria Falls road. Ablution facilities. Swimming pool. Dogs allowed.—P.O. Mabikwa.

LUBIMBI THERMAL SPRINGS CARAVAN PARK. Turn off at Gwaai River, proceed for 21 km to Park. Full ablution facilities. Natural hot spring. Swimming pool. General store.—P.O. Box 706, Bulawayo.

WEST NICHOLSON

TOD'S HOTEL L*. 30 km south of West Nicholson. Caravan site situated near hotel on a drive-in drive-out plan — no unhitching. Bathrooms and full facilities of hotel available.—P. Bag WO 5958, West Nicholson.

Bookings at parks

Almost all commercial and municipal caravan parks will accept advance bookings, and this is advisable, especially if one's vacation coincides with school or public holidays. In the case of National Parks caravan parks, advance bookings may be made with the National Parks Reservations Central Booking Office, P.O. Box 8151, Causeway, Salisbury, Rhodesia. The booking year is divided into two seasons: Winter (May 1 to

October 31) and Summer (November 1 to April 30). Advance bookings for the winter season open on November 1, and for the summer season on May 1. For those not able to make advance bookings, apart from the three peak holiday periods of Christmas and New Year, Easter, and Rhodes and Founders (the second Monday and Tuesday in July) visitors should find no difficulty in obtaining caravan or camping accommodation.

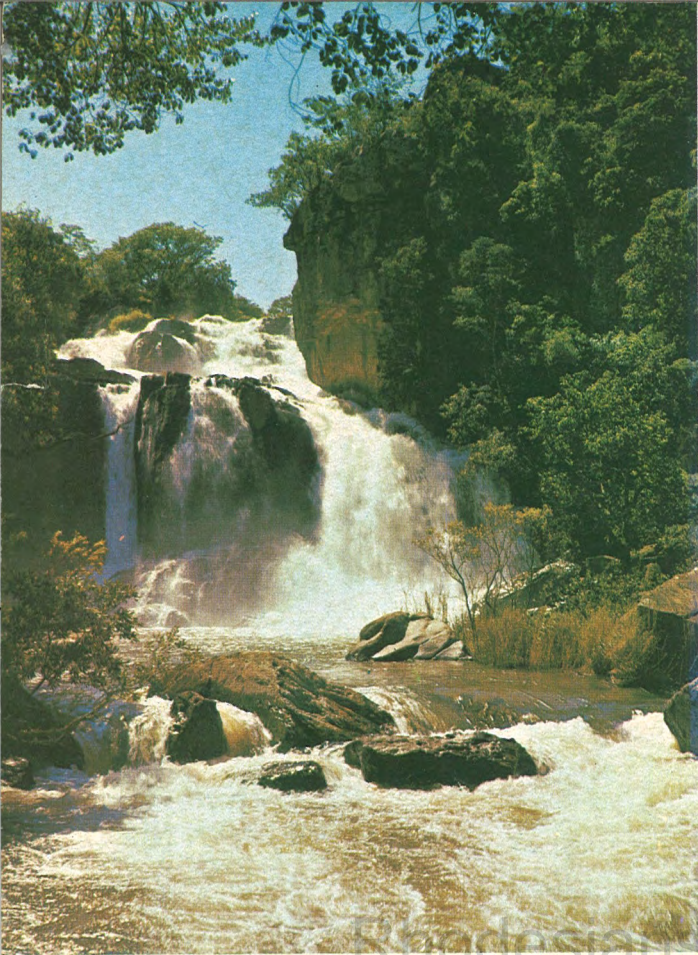


Above: Thirty-five kilometres south of Bulawayo, Rhodesia's second city, is the Matopos, a vast area of granite hills and green valleys. Here the visitor may view game in the national park, see vivid rock paintings in several easily accessible caves, fish in the many small lakes, or visit the impressive grave of Cecil John Rhodes on the summit of a bare, windswept, granite hill. The bird life in this area is particularly prolific, and the world's largest single population of black eagles is to be found here. The scenic splendour of the formations of great boulders, some balanced in fantastic formations, is a feature of the Matopos.

Below: The Bulawayo municipal caravan park, in the centre of the city, has a deserved reputation throughout Southern Africa for the beauty of its situation in Central Park and the high standard of its amenities. There is also another combined camping-caravan site a few kilometres from the main centre, also operated by the City Council.



Left: The 328-metre span of the Birchenough Bridge carries the highway from Fort Victoria to the southern Eastern Mountains across the Sabi River. Other high-level bridges, although not as spectacular as the Birchenough Bridge, carry Rhodesia's roads over the many rivers in the country, ensuring ease of travel even at the height of the rainy season.



Left: The Inyangombe Falls is just one of many picturesque cataracts in the Inyanga area, in the north of Rhodesia's Eastern Mountains. Trout fishing, mountain scenery, ancient ruins, and crisp upland air attract visitors to Inyanga from all over Southern Africa.



Below: The immense Chimanimani Mountains form the southern end of the Eastern Mountains. Their peaks are a challenge to the mountaineer, but there are also opportunities for scenic hikes for the more energetic visitor, especially those interested in the unique flora of the area. The village of Melsetter lies at the foot of the mountains.

Reprinted from *Rhodesia Calls* by Art Printers, Rhodesia and distributed by the Rhodesia National Tourist Board.
© Rhodesia Calls (Pvt.) Ltd. Revised March, 1975

Above: Near the Eastern Mountains centre of Umtali, rise the steep Vumba Mountains. Here, high among the peaks, with views over neighbouring Mocambique, is the Vumba National Park, a 200-hectare garden park of exceptional beauty.

