

**Five ways
to discover
exciting
Rhodesia**

The Rainbow Discovery Route.

Bulawayo - Wankie National Park - Victoria Falls - Bulawayo
Six glorious days in Rhodesia for \$140*



This is the ideal short holiday in Rhodesia—for the man who is pressed for time and has a car that isn't reluctant to get up and go.

DAY 1 Your first day will see you through the Rhodesian border at Beitbridge by lunchtime. You'll drive all the better after the break when you take the road to Bulawayo in the afternoon.

Not much traffic, long straight stretches, an excellent surface. This is cattle-ranching country. As you cross the long bridge over the Umzingwane at West Nicholson you will see the Leibig's canning factory on your left. A few kilometres farther on you will come to the beautifully named Colleen Bawn—the major part of Rhodesia's cement is mined and manufactured here. Gwanda provides an ideal stop for a cup of tea.

The next place you'll notice is Balla Balla—and you'll notice it not so much by the size of the settlement as by the curious bald granite dome that marks the spot where the main road from Fort Victoria and Shabani joins your road. Then Essexvale, where Frederick Courteney Selous, the famous hunter and explorer, once had his home. To Bulawayo now is but a short run through verdant hills that provide a sharp contrast to the sparseness of the cattle country you have left behind.

In Bulawayo you have a wide choice of hotels, or a beautiful caravan park. If you want to dine out, Bulawayo boasts several interesting and exciting restaurants and night clubs. There are fascinating excursions into the Matopos Hills and to other nearby attractions.

Rhodesia's second city, Bulawayo is the hub of Rhodesia's railway system and the cradle of the country's early historical development. The city is particularly proud of its annual "Trade Fair Rhodesia" held in May, which attracts many buyers from South Africa and other countries.

DAY 2 Before you set out next morning, your wife will want to take you shopping. Let her; she will find it different from Johannesburg, and you'll be impressed at how Rhodesia has shaped up under sanctions. You may even have time to pay a visit to the National Museum, which opens at 10. The Doddieburn elephant, one of the largest known mounted specimens is worth seeing; the Zeeder-



berg coach, also on display, is a reminder to the hurrying motorist of today how far Rhodesia has come in a few short decades.

Your next stop is Wankie National Park. The comfortable National Parks' Main Camp is recommended by all visitors—but if you want luxury plus-plus then the nearby Safari Lodge provides everything you could wish.

You will almost certainly have time for an evening game-viewing drive in the National Park before the gates close at 6 p.m.

And, if you're an early bird (and if you haven't wine and dined too well the night before) you'll have time for another next morning.

DAY 3 We have given you a full day and two nights here as a reward for the driving you've done. At Nyamandhlovu or Guvalala pans you can just relax with the binoculars. And may we suggest lunch at the Waterbuck's Head restaurant in Main Camp—it's recommended.

DAY 4 After two nights at the Wankie Park you should be in fine fettle for the drive to Victoria Falls. You by-pass the busy coal-mining town of Wankie on the main road, but many visitors (particularly those with a mining background) are curious to see something of this hardworking community that lives and works so far from the other main centres of population. So if you feel like it, take the short detour. You'll still have ample time to reach Victoria Falls during the afternoon. At the Falls you have a choice of two luxury hotels—with all the trimmings—or a new family hotel on the banks of the Zambezi above the Falls. There is also a comfortable holiday motel and a selection of National Parks' accommodation.

"Scenes so lovely must have been gazed upon by angels in their flight." The words are Dr. Livingstone's, when he first discovered these falls—called Mosi-oa-Tunya (the smoke that thunders) by local tribesmen—but named by the famous missionary-explorer after Queen Victoria. When you see the Victoria Falls for the first time you will have no option but to echo his words. No reading you may have done, no pictures you may have seen, can approach the splendid reality of this most stupendous of all the world's natural spectacles.

DAY 5 How you spend your days at the Falls depends on your own inclinations. What about your own "flight of angels" flip over the Falls by locally based light aircraft, continuing if you wish up-river to see great herds of wild game—a visit to the authentic Matabele village, to watch the craftsmen at work on their carving and weaving—a game-viewing drive in your own car—visits to the curio shops, the snake park, the taxidermist, the crocodile farm—a walk through the Rain Forest (and if you didn't think to bring raincoats these can be hired from the hotel reception desk).

And there is just as much to do in the evenings. Why not try a "sundowner cruise" in a comfortable launch up the great Zambezi river, your drinks served to you on deck while you lazily watch the forested river banks slide by, and perhaps catch sight of a basking hippo enjoying the last rays of the setting sun. This is the real Africa—so don't neglect the opportunity to go on for the evening to a genuine African village and enjoy the exciting atmosphere of tribal dancing by firelight. Later you may wish to rub shoulders with the jet-set at the gambling tables—or you may prefer to play the one-armed bandits Las Vegas style.

There will be dancing in the moonlight by the hotel pool, with a first-class band in attendance—or, if the moon is full, you can hardly pass up the opportunity of viewing the delicate lunar rainbow traced in the spray of the world's greatest waterfalls.



DAY 6 After two nights at Victoria Falls the time will have come to turn and head for home, stopping over at your hospitable Bulawayo hotel en route.

You will never forget your glorious holiday in Rhodesia—and next time you come, perhaps you will be able to stay longer with us and explore some other parts of our fascinating country.

We sincerely hope so.

***COST** The cost of this tour is calculated for a husband and wife without children. The overall distance on Rhodesian roads is 1 750 km and the total sum includes \$20, sufficient for petrol to cover this distance in a motor car with a consumption of approximately 9 litres/100 km (31 mpg). Accommodation costs account for \$64 of the total, allowing for four nights at dinner, bed and breakfast rates at medium price range hotels in Bulawayo (2) and Victoria Falls (2) and two nights in a National Parks cottage at Wankie Main Camp. For additional meals—light lunches each day and breakfasts and dinners in the restaurant at Main Camp—the sum of \$25 is included; while allowance has been made for a couple of rounds of drinks each evening (total \$9). The remaining \$22 should cover the cost of admission to Wankie National Park (\$4) and various extras at Bulawayo and Victoria Falls including a sundowner cruise on the Zambezi River (\$7). Casual spending money has not been allowed for.

The same holiday for two people with accommodation in luxury hotels at Bulawayo, Wankie and Victoria Falls would work out at approximately \$252.



The Highland Discovery Route.

Beitbridge - Fort Victoria/
Zimbabwe - Melsetter - Vumba -
Umtali - Inyanga - Salisbury -
Kariba - Salisbury - Beitbridge
Eleven adventurous days in
Rhodesia for \$330



DAY 1 Time to head north to discover adventure in Rhodesia. Without too much difficulty you can be up and over the Zoutpansberg, across the Limpopo, and checking through the border at Beitbridge by late afternoon. Even at their busiest, the frontier officials will have a smile for you, because you are a welcome visitor in Rhodesia. Relax with a "sundowner" at the local hotel or motel—it's a traditional Rhodesian custom.

DAY 2 Next morning you will set out early on the road for Fort Victoria, remembering that it was through this wild and low-lying country, little more than 80 years ago, that a long column of horses and wagons toiled to found a new country, to be known as Rhodesia. You will cross the rivers they had to cross—the Buby, the Nuanetsi, the Lundi. Beyond the Lundi you will begin to approach the great granite hills up which the early pioneers had to manhandle their wagons, and farther on another range of hills, and the Providential Pass (as it is called) that eventually provided them with a new way through. Pause for a moment at the head of this pass—it is a pleasant spot, with a lake glittering in the valley below—and read the memorial tablet set by the roadside in honour of the early endeavours that made it possible for you to visit Rhodesia today. Only a few kilometres now to Fort Victoria, with its belltower beside the main street where the curfew bell is still tolled at 9 o'clock each evening, the only remaining portion of the old white settlement that was the first in the country.

There are two hotels in town, a motel just outside at the turn-off to Zimbabwe, and two more hotels not far from the Zimbabwe Ruins. You take your choice of these, book a comfortable room enjoy lunch, and still have time for sightseeing. The brooding Zimbabwe Ruins, perhaps—Africa's greatest unsolved mystery—or the nearby Morgenster or Capota Missions that do such fine work for the blind and physically handicapped.

Zimbabwe may draw you back tomorrow or you may prefer to visit Le Rhone animal farm to see the lions, the cheetahs, the elephants, that have played star parts in so many South African and overseas film scripts. Take the lakeside road then, for exciting views of Lake Kyle, the largest (after Kariba) of all Rhodesia's many man-made lakes, and the most beautiful. It is possible to drive right round the lake, by tar road to beyond the beautifully designed dam wall, and the rest of the way on a sometimes rather rough road which should be treated with caution. Many visitors prefer to take



the car ferry across the lake (before reaching the dam wall) to the Kyle National Park (which also provides comfortable accommodation) for a breathtaking game-viewing drive, with startling lake views and the almost certain opportunity to see and photograph sable, antelope and white rhino. In the Kyle Park you may also find waterbuck, impala, wildebeeste, and rare species like the nyala, oribi, blesbok and Lichtenstein's hartebeeste.

The road back to Fort Victoria completes a fascinating circular tour, with a pause en route to visit the Italian Church, built during the war by Italian prisoners of war as a memorial to their comrades who died in captivity—with its remarkable interior decoration.

DAY 3 Next day takes you from Fort Victoria due east on the road to Melsetter via the huge Birch-nough Bridge over the Sabi river. The immense steel bow of this bridge is a surprising sight as it looms out of the surrounding featureless bush country. The little hotel beside the bridge provides a pleasant stop for tea.

On now, towards Melsetter and the Chimanimani Mountains. There is one hotel at Melsetter, but other hotels in the vicinity are to be found at Chipinga, Cashel, and Hot Springs.

Melsetter itself is a charming mountain village set in the foothills of the great Chimanimani range, which form Rhodesia's eastern border with Mozambique. Just to the north of the village is the beautiful Bridal Veil Falls, the eland sanctuary, and Pork Pie hill, which provides beautiful views of the area.

A few kilometres away to the east lies the Chimanimani National Park, preserved as an unspoiled mountain area. There are no roads in the Park, and the only accommodation is a mountain chalet providing male and female dormitory accom-

modation. Walkers and climbers may camp free of charge (at their own risk) anywhere within the park.

DAY 4 There is a choice of roads from Melsetter onwards to Umtali, and your next night-stop in the scenic Vumba.

If you feel pressed for time take the fine new tarmac road via Skyline Junction—but if you would like to drive slowly and appreciate really breath-taking views, then follow the old, winding scenic road by way of Cashel. (Special care should be taken on this road during wet weather). The mountainous Vumba region has a different kind of charm. This delightful area has a number of comfortable hotels, full of old world charm and each set among beautiful gardens. The Vumba is full of gardens, the largest and most developed—the Vumba National Park—now belongs to the nation and probably rivals any in Africa.

In the nearby city of Umtali, set amidst its bowl of delightful hills, there are also several comfortable hotels and an excellent motel—as well as many beautifully designed modern public buildings. The whole of eastern Rhodesia shops in Umtali: and you may want an hour or two to do the same.

DAY 5 From Umtali, you strike due north to the vast downs of Inyanga. Here is Inyangani, Rhodesia's highest mountain—and an openness that lifts the heart and heals the soul. There are beautiful lakes, crisp tumbling trout streams, great forests, waterfalls, wide expanses of open downland, extensive ancient ruins, comfortable, homely hotels with deep chairs and roaring log fires, golf courses, good fellowship and—above all—that dream-like sense of being above and away from it all.

DAYS 6 & 7 The road to Salisbury from Inyanga is a delight; passing through the towns of Rusape and Marandellas. Two nights in Salisbury is a must. The choice of hotels is wide-ranging—from the four-star luxury establishment with television in every room and staff to cater to your every whim, through to the comfortable but homely private hotel. If you want to go out on the town there is an equally wide range of restaurants and night-clubs catering for every taste and pocket. From putt-putt to polo, from sky-diving to skin-diving, every sport is catered for in the city. There are a number of fine golf courses and racing at Borrowdale Park most Saturdays. The list of things to see and do is endless—a brief selection for the visitor would include

trips out to nearby Lake Mcllwaine, with its hotel on the lakeshore, numerous sailing and powerboat clubs, pleasure resorts and boating marinas, rock-paintings and game park; and to the fascinating aloe and cycad garden at Ewanrigg National Park, and a few kilometres farther to the water cascades at the Mermaid's Pool resort. The serious visitor will not miss the National Gallery and the Queen Victoria Museum. And since you came into Rhodesia on this tour remembering the early days of the country's short history, a visit to the public galleries of the impressive National Archives building would add colour to what you have learnt of a recent but exciting past.

DAY 8 After your brief stay in Salisbury, take the road north once again, through the little town of Banket, rapidly-growing Sinoia, Karoi (the centre of a post-war farming boom) to Makuti, where you will make a turn to the left for Kariba.

Kariba is fast becoming one of Rhodesia's premier holiday playgrounds. There is a choice of several good hotels and resorts, some set on high bluffs with astonishing views across the vast lake into the haze-blue distance, others nestling with Mediterranean charm along the water's edge.

DAY 9 The vast dam is built across a craggy gorge, and built up behind its wall is the greatest inland sea man has ever succeeded in capturing and holding.

For the fisherman, this is indeed the mecca—Kariba's fighting tiger fish have a world-wide reputation among sport fishermen; and the well-known Kariba bream provides tasty eating.



Numerous locally based operators arrange tours on both land and water; every water sport is catered for, and there are evening cruises in a luxuriously appointed launch on which you may sip your "sundowners" as the sun sets across the lake. You may enjoy a cruise across the lake to the Bumi Hills Safari Lodge, set on a high headland in the midst of an animal kingdom; or fancy flips by air or in the new and exciting hydrofoil, "Seaflyght", which now operates a scheduled service from Kariba to the far end of the lake, 255 km away.

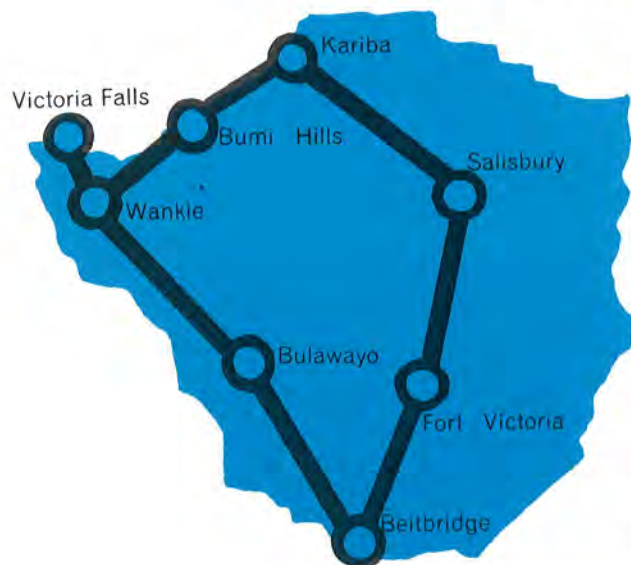
DAYS 10 & 11 As you whisk back towards Salisbury (for an overnight stop) and on towards Fort Victoria, Beitbridge and home, along these fine roads that have so soon replaced the rutted bush-tracks of a not-so-distant past, you will carry with you a store of never-to-be-forgotten memories. You will have done your share of discovering Rhodesia.

***COST** The cost is calculated for a family of two adults and two children under 12. Included in this sum is \$32.76 for petrol, sufficient to cover the complete round trip of 2 800 km in a motor car with a consumption of approximately 9 litres/100 km (31 mpg). Accommodation costs included amount to \$220 for the eleven nights, all at dinner, bed and breakfast rates (except the three nights in Salisbury at bed and breakfast only rates) in medium price range hotels. For additional meals — snack lunches each day and light suppers for the three nights in Salisbury — the sum of \$36 is included; while allowance has been made for a round of drinks each evening (total \$16.50). The ferry fare at Lake Kyle and admission to Kyle and Vumba National Parks is covered by an included amount of \$5 and an additional \$15 is included to cover contingency spending in Salisbury and at Kariba. Casual spending money has not been allowed for.

The Great Lake Discovery Route.

Beitbridge - Fort Victoria -
Salisbury - Kariba - Bumi Hills
(by Hydrofoil) - Wankie -
Victoria Falls - Bulawayo -
Beitbridge.

Thirteen exciting days in
Rhodesia for \$475*



DAY 1 With that new car you've just bought, the road to Rhodesia is no more than a short hop and you'll have no difficulty in making Beitbridge by early afternoon, and Fort Victoria in time for a leisurely bath and "sundowners" before dinner.

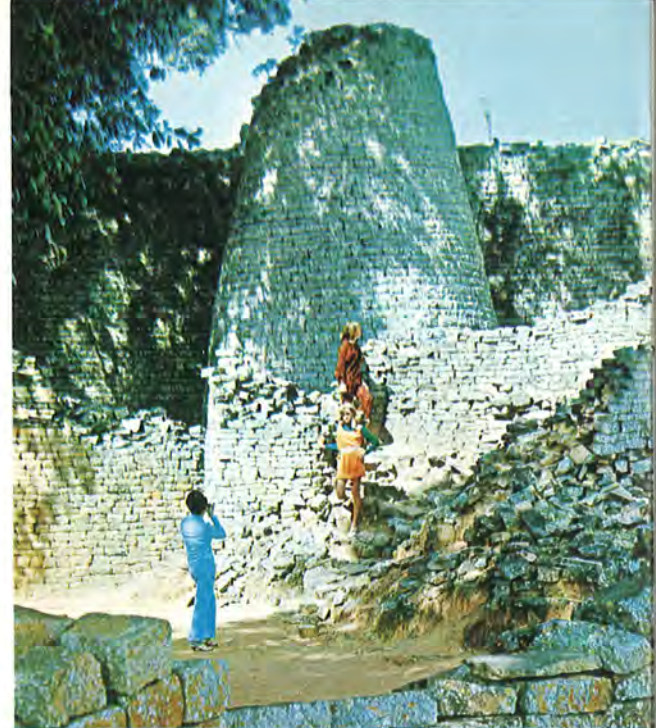
Make the most of this, for here is the opportunity for your first chat with friendly Rhodesians. This tour, is something special—for the first time we are able to offer the motorist a "grand tour" of Rhodesia's main tourist attractions without once having to retrace his steps.

To begin, the historic pioneer town of Fort Victoria and Zimbabwe. Here is the greatest riddle of Africa. This immense complex—a city from an unknown past—was so expertly constructed without mortar, that all its major features still stand today. Rhodesians themselves come again and again to Zimbabwe, to stand in the Great Enclosure and contemplate the massive Conical Tower—or to climb the narrow rock steps leading up between huge slabs of granite, the same today as they were in the distant past when they provided an impregnable bastion for an unknown ruler of a great empire in the dark hinterland of Africa.

DAY 2 We recommend that you spend two nights at Fort Victoria. Savour Zimbabwe but do not move on without seeing Lake Kyle. Here are black bass in abundance, and if you are a fisherman you may stay longer. But even the most casual visitor should drive the shoreline road, and cross the lake in the motor-ferry to the Kyle National Park (which also provides comfortable accommodation) to see a large number of white rhino as well as many other species. From here, the road back to Fort Victoria completes a fascinating circular tour, with a brief pause to visit the Italian Church.

DAY 3 After a leisurely breakfast it is but a short day's run on a fine road through Umvuma and Enkeldoorn (the only town in the whole of Rhodesia with an Afrikaans name) to Salisbury, the capital.

DAY 4 We have put you down for two nights in Salisbury, but they may not be enough. Your choice of hotels is wide-ranging—from the four-star luxury establishment with television in every room and staff to cater to your every whim, through to the comfortable but homely unlicensed family hotel. If you want to go out on the town there is an equally wide-ranging variety of restaurants and night-clubs



catering for every taste and every pocket. The big city stores are worth a shopping visit—and the serious visitor will not miss the National Gallery and the Queen Victoria Museum.

DAY 6 After your brief stay in Salisbury, take the road north once again, through Rhodesia's maize-belt and the little town of Banket to Sinoia. Time for a break now at the famous Sinoia Caves, right by the main road and well worth a visit.

From Sinoia, the road north continues through Karoi to Makuti, where you take a turn to the left for Kariba. This road has a romantic and interesting history, for it was originally constructed as an access road during the building of the Kariba Dam. The engineers followed an existing elephant path. This is an added reason for caution, for although displaced from their traditional footpath the elephant still favour this route, and incautious motorists have been known to meet them face to face round blind bends.

Kariba is fast becoming one of Rhodesia's premier holiday playgrounds, and although all is modernity, there is no forgetting that only a few years ago this was one of the wildest and most inaccessible parts of Southern Africa, a veritable animal kingdom.

DAY 7 We have suggested two nights here at least, so that you can get round and see the dam wall and visit some of the other attractions. For the fisherman, this is the mecca—Kariba's fighting "tiger" fish have a world-wide reputation among the sport fishermen, and the well known Kariba bream makes tasty eating.

Numerous locally based operators provide facilities for water sport and ground touring. Indeed, since you are intending to travel the length of this great lake by the high-speed hydrofoil service, you will want to surrender your car the afternoon before your intended departure for conveyance by the slower car ferry. Without your car, here is the opportunity to sit back and let one of the local operators take over your touring programme.

DAY 9 After your short stay you will board the hydrofoil "Seafight" to be whisked across to Bumi Hills in airline comfort and almost certainly at the fastest rate of knots you have travelled on water. At Bumi Hills Safari Lodge you can breathe the remoteness of wild country that was once a feature of the whole of this area. The hotel is well-appointed, and set as it is on a high headland, provides a breathtaking view of the lake and the wild game that frequent the lake shore.

On again by hydrofoil (but take a three-night stop-over if you wish) to complete this dream trip on the world's greatest man-made lake. On the way, "Seafight" will make calls at remote lakeside settlements and fishing camps, connected to the



outside world only by a daily radio-telephone link with romantic names like Sinamwenda, Sijirira, Binga and Mlibizi, and you are sure to meet some of the shy, primitive Batonka people to whom this part of the world is home.

Msuna, where you disembark, is the point at which the Zambezi River flows into Lake Kariba. Here you are re-united with your motor car, and after a few kilometres of dirt road, are only 143 kilometres from the Victoria Falls on a tar road.

This exciting voyage by hydrofoil is an alternative to the 1 255 km route from Kariba to Victoria Falls via Bulawayo.

Tonight, however, we are not taking you all the way to the Falls but dropping you off for a convivial evening at the comfortable two-star Baobab Hotel on the outskirts of Wankie town.

DAY 10 Time for a lazy late breakfast in the morning for it is little more than an hour's drive through to Victoria Falls. For your two nights at the Falls you have a choice of luxury hotels, a family hotel, or National Parks' accommodation, and because you have arrived early you have time after checking in to work in an extra day's sightseeing.

DAY 12 All too soon the time will come to say goodbye to the Victoria Falls and head south on the road to Bulawayo. Once past Wankie, you will be skirting the vast Wankie National park. The road is first class, there are no towns to negotiate, and you should have no difficulty in reaching Bulawayo in five hours.

Bulawayo is Rhodesia's second city, where you can enjoy a full day seeing the sights. "Musts" include a drive into the Matopos, the National Museum, and the Khami Ruins.



DAY 13 When you bid goodbye to Bulawayo on your last morning you will be leaving a city that was once the royal kraal of Lobengula, king of the Matabele; there, in the grounds of the city hall is preserved the well that provided the only drinking water for the city's white population in laager during the Matabele Rebellion of 1896. Its tree-lined streets; its gracious homes and beautiful gardens, no less than the friendliness of its people will long remain in your memory . . .

But now, it's the main road, through Essexvale, Gwanda and West Nicholson—to Beitbridge. A good story to tell the customs officer—for you're bound to have accumulated a few treasured mementoes of your Rhodesian holiday—and then home. Till next time—for you'll come again, as they all do.

***COST** The cost is calculated for a family of two adults and two children under 12. Included in this sum is \$26 for petrol, enough to cover the distance (2 230 km) to be driven over Rhodesian roads, in a motor car with a consumption of approximately 9 litres/100 km (31 mpg). The distance by hydrofoil is 255 km and the fare of approximately \$93 (for passengers, and car by associated car ferry) is also included. Accommodation accounts for \$265 of the total sum, allowing for 11 nights at dinner, bed and breakfast rates at Fort Victoria (2), Kariba (2), Bumi Hills, Wankie (Baobab Hotel), Victoria Falls (2), Bulawayo (2) and Beitbridge, and two nights at bed and breakfast rates in Salisbury — all in medium price range hotels. For additional meals — light lunches most days (lunch is inclusive on the hydrofoil journey) and dinners in Salisbury — the sum of \$36 is included; while allowance has been made for a round of drinks each evening (total \$19.50). A further \$35.50 is included to cover the cost of a sundowner cruise at Victoria Falls (\$10), admission to the craft village and the Matopos Game Park, the Kyle ferry and various extras in Salisbury, Bulawayo and Kariba. Casual spending money has not been allowed for.

Note: At certain times of the year, owing to a build-up of weed in the narrow Devil's Gorge, the hydrofoil service terminates at Mlibizi instead of Msuna. Enquiries should be made at the time of booking.

The Baobab Discovery Route.

Beitbridge - Bulawayo -
Matopos - Victoria Falls -
Wankie National Park - Fort
Victoria/Zimbabwe -
Beitbridge.
Nine magic days in
Rhodesia for \$280



DAY 1 Cancel your milk, put your suitcases in the car and take the road to the north. Without breaking any speed limits you can reach Beitbridge by late afternoon. You'll find the customs and immigration officials friendly and efficient. And you can be relaxing with your first Rhodesian "sundowner" before the sun sets over the "grey-green greasy Limpopo".

At Beitbridge you have a choice of hotel or motel for the night. If it is still early, you may want to press on as far as West Nicholson, which has two hotels nearby.

DAY 2 After breakfast, a pleasant run through cattle-ranching country, past small towns like Colleen Bawn, Gwanda, Balla Balla to Essexvale, with its extensive market gardens. Now you start climbing up through lovely scenery to Bulawayo, Rhodesia's second city.

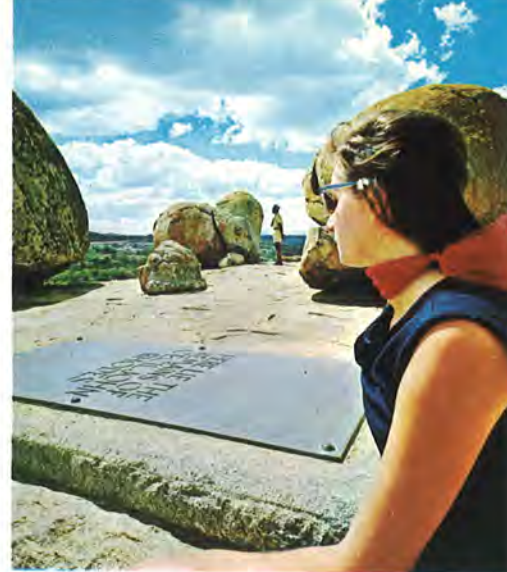
Here you have a wide choice of hotels, from the economical family style to the frankly luxurious. Make a night of it—do the town! Or watch TV before dropping off to sleep in a comfortable bed.

DAY 3 Next day, off to the Matopos—a sea of granite hills, and one of nature's wonders. See graceful sable antelope, bushman cave paintings, lovely stretches of water set like jewels among the hills—and, for an unforgettable experience, the grave of Cecil John Rhodes, in its simple but majestic setting.

Time after lunch for the National Museum—in a lifetime of game-viewing you'll never see an elephant to compare with the mounted specimen here; or perhaps you'd prefer to visit the Mzilikazi Craft Centre, or (just a short trip out of town) the Khami Ruins.

A second evening in Bulawayo means another chance to do the things you missed last night—the theatre perhaps, an orchestral recital, or just a good film at a comfortable cinema.

DAY 4 You needn't miss breakfast next morning for the run to Victoria Falls. The road is excellent, there are no towns to negotiate, and you shouldn't have any difficulty in covering the distance in five hours. Your car, too, would like a full tank—it's 135 kilometres to the next pump! You'll pass through



sleepy little places, forest country, and skirt the great Wankie National Park. You'll by-pass the busy coal-town of Wankie and swoop towards the hovering spray-cloud of the Victoria Falls almost before you know it.

Take your choice here—of luxury hotels, a family motel, or National Parks' accommodation. But be sure you've booked in advance, for this is a mecca for the travellers.

Play the field at the gambling tables, or solitaire with the one-armed bandits. Perhaps you'll be content this first evening with a good dinner, and dancing by the hotel pool. Tomorrow is going to be a busy day.

DAY 5 On the day you see the Victoria Falls for the first time, you'll have no choice but to agree that what you are seeing is probably the most stupendous of all the world's natural wonders.

How you spend your day at Victoria Falls depends on your own inclinations—but here are some suggestions—your own bird's eye view of the Falls from a light aircraft, extending your flight if you wish up-river to see a wide variety of game—a game drive in your own car—a visit to the Matabele village to watch the tribal dancing—visits to the curio shops, the snake park, the taxidermist—a journey through the Rain Forest (mackintoshes can be hired from hotel reception desks if you didn't think to bring your own).

And late that afternoon—why not a leisurely cruise in a high-decked launch up the wide Zambezi river, when you'll be fascinated by the tropically wooded river banks around each bend and perhaps catch sight of an elephant or buck. This is the real Africa—so take it from there and book with a local touring company for an evening at a genuine African village to watch tribal dancing by firelight—an experience never to be forgotten.

DAY 6 In the morning, once again you are on the road south, but this time, you will turn off just past Wankie Town on the road to Sinamatella Camp in the Wankie National Park. Book in and make yourself comfortable at this delightfully cool camp on a hill-top. Before your game drive, talk to the camp officials, who will be only too pleased to advise you on which route to take for the best viewing. You'll enjoy the company as you relax over drinks that evening, and sleep as you have never slept before in the comfortable National Parks cottages.

DAY 7 From Sinamatella to Main Camp is a good morning's drive—the last 80 km of it on a tarred road. Take it gently, keep your eyes peeled—see lion on the kill perhaps, sometimes great herds of elephant, zebra, giraffe, buffalo, impala, sable, ostrich—you name it, Wankie's almost sure to have it. After another good lunch, rest and a drive to one of the pans to watch the animals at a waterhole. Good company again that evening and another relaxing sleep to prepare for an early start.

DAY 8 To Bulawayo, it's tar all the way, and after lunch take the Johannesburg road, but this time fork left at Balla Balla. You pass the little mining town of Filabusi and the bigger asbestos mining centres of Shabani and Mashaba, to the old pioneer town of Fort Victoria, where the bell tower is a relic of the white man's first settlement in Rhodesia. There are two hotels in town, a motel at the Zimbabwe turn-off just outside the town, another two hotels at Zimbabwe Ruins and National Parks' accommodation on the shores of Lake Kyle, as well as at Zimbabwe. Also several other privately run resorts and camps are in the vicinity. You'll be tired after a long day's run so leave your sightseeing over to the morning.



DAY 9 This is the day for Zimbabwe—Africa's most baffling mystery. Explore it—imagine this great complex of miraculously constructed buildings—almost a city out of an unknown past—as it was a hundred years ago, 500 years ago, a thousand years ago. Climb the great acropolis and experience the impregnability of those who once ruled here at the heart of a vast empire. Then take the road along the Kyle lakeshore. This is Rhodesia's biggest lake after

Kariba, and in the opinion of many, its most beautiful. There is a ferry which will take you and your car across the lake to the Kyle National Park for more game viewing, delightfully scenic drives, more than a dozen species of antelope, giraffe and zebra—and back to Fort Victoria by a different road.

Again you will have had a full day. Sleep well, for tomorrow you will take the fine modern road for Beitbridge and home—your Rhodesian holiday a memory that you will never forget.

***COST** The cost is calculated for a family of two adults and two children under 12. Included in this sum is \$25,80 for petrol, enough for the complete round trip of 2 210 km in a motor car with a consumption of approximately 9 litres/100 km (31 mpg). Accommodation costs included amount to \$151, allowing for 7 nights at dinner, bed and breakfast rates at medium price range hotels at Beitbridge, Bulawayo (2), Victoria Falls (2) and Fort Victoria (2) and two nights in comfortable lodge accommodation at Main Camp and Sinamatella Camp in Wankie National Park. For additional meals — snack lunches on eight days and light breakfasts and dinners at National Parks restaurants in the Wankie National Park — the sum of \$20 is included; while allowance has been made for a round of drinks each evening (total \$13,50). Such extras as National Parks admission fees and admission to the craft village, the sundowner cruise at Victoria Falls and fares on the Kyle ferry are covered by the remaining sum of \$19,70. Casual spending money has not been allowed for.

The Voortrekker Discovery Route.

Beitbridge - Chiredzi -
Chipinga - Fort Victoria.
Four or more exploratory days
in Rhodesia for \$110 ❀



Want to lose yourself in the discovery of a corner of Rhodesia where the average South African traveller will never find you? Try this little tour—it's tailor-made for you, and not expensive either.

DAY 1 Your first night-stop will be at Beitbridge, after crossing the Limpopo and completing frontier formalities with our polite officials.

DAY 2 From Beitbridge, take the Fort Victoria road through open lowveld country. There's no hurry, so linger if you wish at the Buby River (comfortable motel and private game reserve, where leopard can be seen), or at the Lundi River (charming country hotel with hippo pools nearby).

At Ngundu, 193 km from Beitbridge, turn right on the main tar road leading to Rhodesia's exciting lowveld development. The road will take you past Triangle and the Lowveld airport at Buffalo Range to your night stop at the little town of Chiredzi, with its delightful hotel, the Planters' Inn.

Chiredzi regards itself as the capital of the Lowveld—a vast area of irrigation development built out of what was once almost wilderness country—a complex of great estates producing sugar, citrus, cotton and winter wheat.

DAY 3 Continue from Chiredzi next morning, following the gravel road to the Sabi river causeway, about to be replaced by a new high-level bridge. Again you are discovering a corner of Rhodesia before the great mass of tourists discovers it.

From the causeway, your route takes you almost due north along the east bank of the Sabi, past the extensive Chisumbanje irrigation settlement and Rupisi Hot Springs to join the tar road again a few kilometres from Chipinga, your second night stop.

There is one hotel in the town which provides comfortable accommodation—but bookings should be made in advance.

Chipinga is of great historic interest to the South African visitor.

It was the express wish of Cecil John Rhodes that this area, known as Gazaland, be settled before the turn of the century. Between 1892 and 1896 no less than 11 separate treks came into the area from the Orange Free State, the Cape and Natal.

Chipinga is the centre for an extensive tea, coffee and cheese producing region. Some 32 km



to the south, on a good road, part of which is tarred, lies the Chirinda Forest, which provides the highlight of any visit to this area. This forest, on the edge of the escarpment where these mountainous borderlands of Rhodesia drop away into Moçambique is the largest true rain forest in Rhodesia, and contains more than 100 tree species. Many are centuries old, and the well known Big Tree (a red mahogany) is more than 66 m in height with a circumference of 16 m.

DAY 4 An early start next morning will see you on the road to Fort Victoria (tar all the way) via Birchenough Bridge—where you cross back over the wide Sabi river on a graceful steel arch span.

Before reaching Fort Victoria you will observe a turn-off to the left to the Kyle National Park, well worth a visit for its scenic views, white rhino,

and many species of antelope. The day's journey is not a long one, and two to three hours set aside for Kyle should not prevent you reaching Fort Victoria in time for a sundowner before dinner.

DAY 5 Next morning, if time is pressing, you can take the road for Beitbridge, the border and home, thus completing your four-day itinerary in Rhodesia.

But no one should really leave Fort Victoria without paying a visit to Zimbabwe, where you could spend the morning, making for Beitbridge after lunch, or you may care to book in for an extra night at Fort Victoria.

Zimbabwe provides only one of several exciting exploratory side-treks that can be taken on this route. Here are three others that you might like to add:—

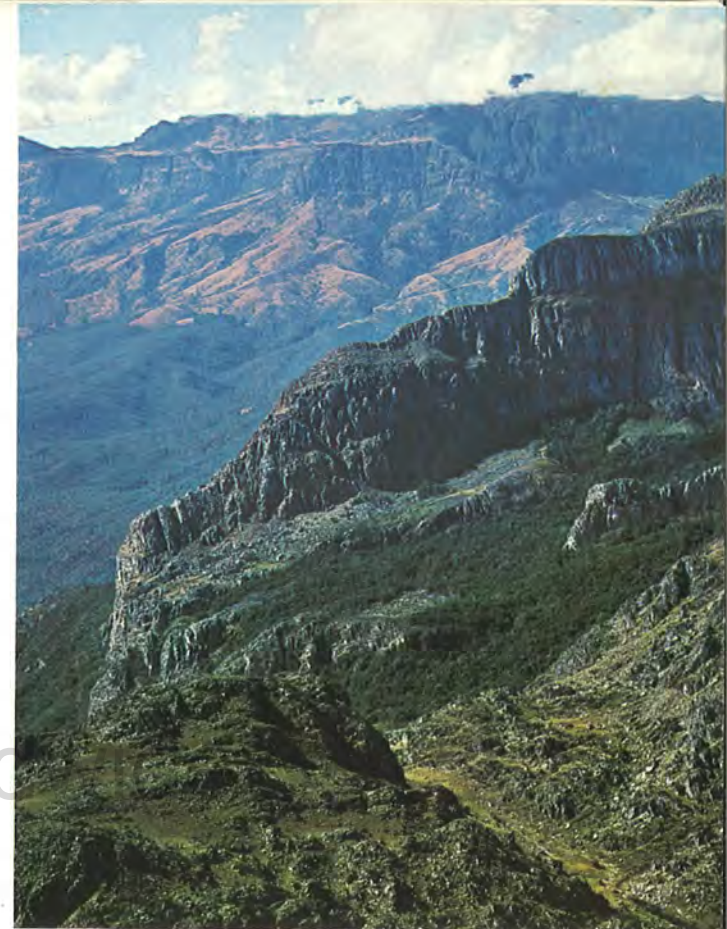
(1) Gona-re-Zhou Game Reserve in season (Mabalauta area): On the road north from Beitbridge (first day) turn right at Nuanetsi and follow the

gravel road for 89 km to Chikomedzi, turn right and travel another 46 km to the National Parks' accommodation at Swimuwini Rest Camp. You would need your own crockery and cutlery, and should bring your food with you from Beitbridge. Chalets, with lighting and refrigerators, camping, caravanning.

(2) Gona-re-Zhou Game Reserve in season (Chipinda Pools): Chipinda Pools is reached by road from Chiredzi (where food supplies should be obtained), a distance of 59 km. Camping and caravan park only.

(3) Melsetter-Cashel-Hot Springs: Leave Chipinga by the same road as that described in the itinerary (third day), but 13 km from Chipinga take the road for Melsetter instead of the road for Birchenough Bridge. See the Bridal Veil Falls and then take the scenic gravel road route via Cashel and back on to the main road at Melsetter Junction, there turning left towards Birchenough Bridge, via Hot Springs. This additional loop adds about 153 km to your journey. Fifty-five km of this is on a gravel road with wonderful views, which should be taken slowly. An additional night stop would be necessary to do justice to all the attractions on this route, and there are hotels at Melsetter, Cashel, Hot Springs and Birchenough Bridge.

All in all this route provides a very flexible itinerary for the motorist who wants to make the best of a little-known area of Rhodesia.



***COST** The cost is based on a family of two adults and two children under 12. Included in this sum is \$15 for petrol, sufficient to cover the distance (1 170 km) to be driven over Rhodesian roads in a motor car with a consumption of approximately 9 litres/100 km (31 mpg). Accommodation accounts for \$73 of the total sum, allowing for four nights at dinner, bed and breakfast rates at medium price range hotels at Beitbridge, Chipinga and Fort Victoria and bed and breakfast rates at Chiredzi. For additional meals — light lunches each day and supper at Chiredzi — the sum of \$12 is included; while allowance has been made for a round of drinks each evening (total \$6). An additional \$4 has been included to cover the cost of contingencies, including admission to Kyle National Park — but no casual spending money has been allowed for. The various side trips described above would involve extra distances and additional night stops, and costs for these have not been included.

More Happy Discoveries.



BEER

Our beer costs less than yours. And we Rhodesians believe it tastes better too!



PETROL

No more coupons. All the petrol you need all over the country — and served with a big wide grin!



ECONOMY

Where else can you get your favourite brand of cigarettes at only 17c a pack. And prime rump steak at 45c a lb.



HOTELS

A fine hotel we know charges only \$5,50 for bed, breakfast and dinner. And everywhere there are special rates for children.



CLIMATE

People from abroad tell us we've got the best climate in the world.



CLOTHES

Leave that tiara at home. We're for informality, like cotton dresses, slacks and shorts.

Rhodesians Worldwide



The Rhodesia National Tourist Board, P.O. Box 8052, Salisbury.

Head Office:

Cecil House,
95 Stanley Avenue,
Salisbury.

Johannesburg:

Carlton Centre,
Commissioner Street,
Johannesburg.

Durban:

315 Smith Street,
Durban Club Place,
Durban.

Cape Town:

2219, Trust Bank Centre,
Cnr. Adderley and Riebeck Sts.,
Cape Town.