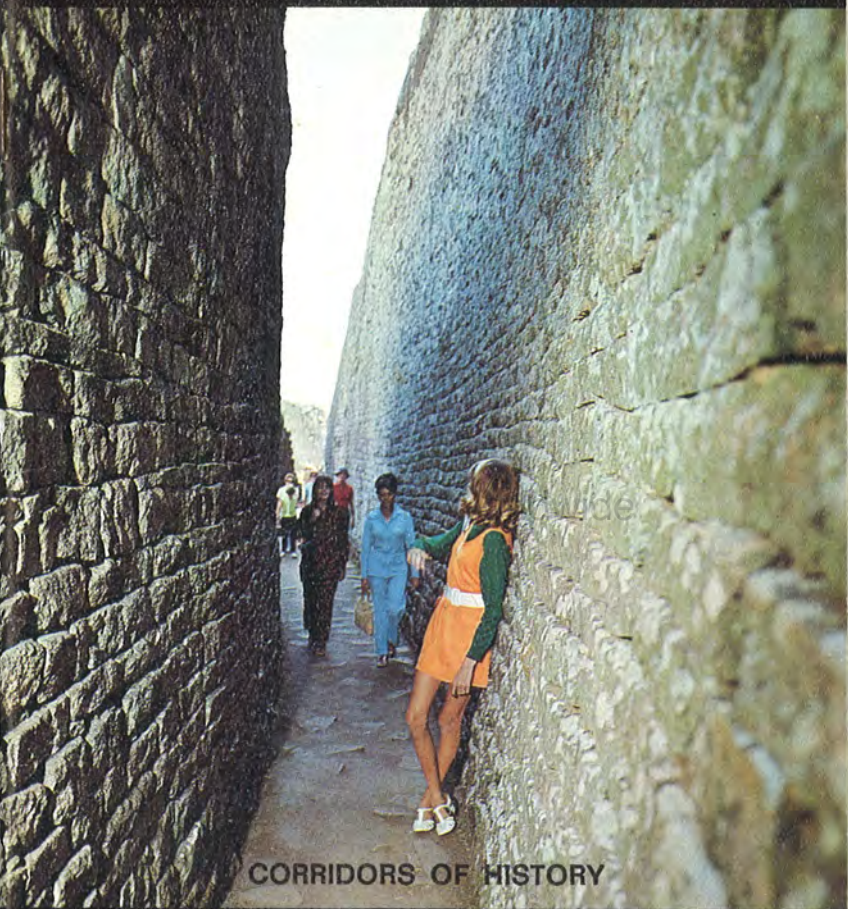


FORT VICTORIA



CORRIDORS OF HISTORY

Zimbabwe and Lake Kyle



Enjoy a comfortable flight to Fort Victoria with Air Rhodesia. Explore the Ruins and surroundings, Karanga Village and Museum. Visit Lake Kyle—second only to Kariba in size. This and more on Air Rhodesia package tours.

FORT VICTORIA

*font changes,
Picks shovel*

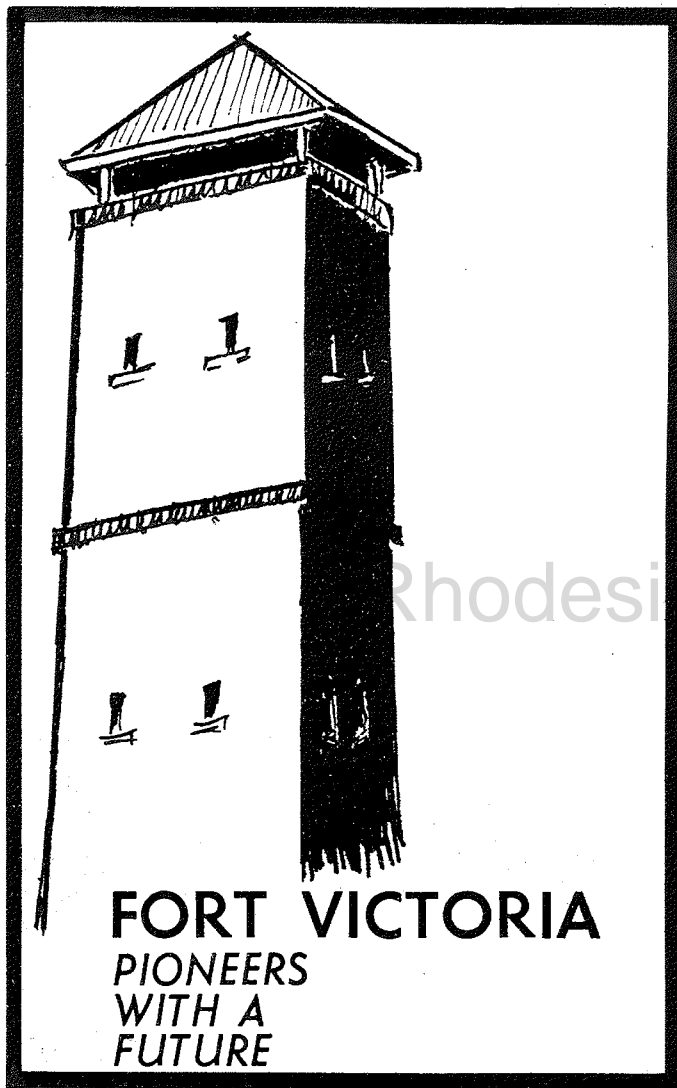
This pamphlet has been produced by the Publicity Association of Fort Victoria, Kyle and Zimbabwe. If you would like further information about the area, please write to Box 340, or telephone 2643 Fort Victoria.



The Pioneer Town

It was on the 14th August, 1890, that the Pioneer Column, with 117 wagons arrived at a site about 8 km south of the present town. The original mud fort is now marked as a National Monument. Because of the scarcity of water, the pioneers moved to the present site, between the Mucheke and Shagashi rivers. Here they built a simple fort of solid masonry walls, in the form of





Published by the Fort Victoria/Zimbabwe Publicity Association,
P.O. Box 340, Fort Victoria and printed by Belmont Press (Pvt.)
Ltd., P.O. Box 31, Fort Victoria-

a laager with two look-out towers, and named the settlement after the reigning sovereign.

The west wall and two towers are still extant. One tower houses a large bell which is rung each evening, and the other tower contains a number of photographs and relics of pioneer days.

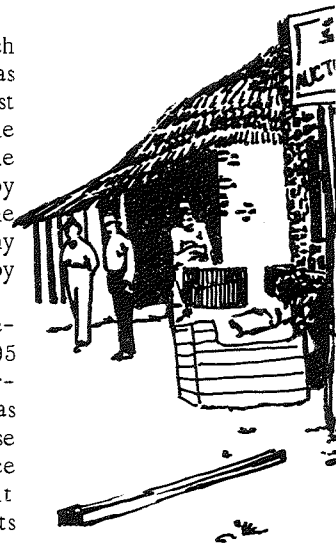
The search for gold, and the offer of 3000 acre farms to the pioneers, encouraged men to settle in the area. Before the turn of the century 140 mining claims had been registered. However, very few claims are worked today, and other minerals of great value were to be discovered many years after the pioneers had staked their first claims.

In 1891 the first Anglican church was built, and this was also used as a school room. In 1894 the first form of local government, the Sanitary Board, was formed. The pioneers were rapidly followed by traders, the first to arrive was the Bechuanaland Trading Company and they were closely followed by the Meikles Brothers.

The settlers soon developed recreational facilities, and by 1895 the Gymkhana Club had been formed, with Dr. Starr Jameson as President. By 1902 a race course had been built and regular race meetings were held. It was about this time that the Victoria Sports Club was formed.

The first financial bank, a branch of the Standard Bank, was opened in 1911. Motor cars were first seen in the town in 1913, and it was in 1914 that the branch line between Umvuma and Fort Victoria was opened.

In 1926 the Town Management board was constituted, and in 1928 the Waterworks and Power Station were opened. Communications were not easy, and during the 30s strip roads were built, and low-level bridges constructed. Swollen rivers during the rainy season would hold up traffic for many days.



During the second World War an Italian prisoner-of-war camp was set up on the outskirts of the town. The beautiful chapel built by the Internees is now a well known place of tourist interest.

In 1946 the first scheduled air service by Southern Rhodesia Air Services was instituted. The first step of importance in the industrial field was the opening of a large Cold Storage Commission factory in 1947. Over the years many light industries have been developed. By the 70's fine national highways, and a good aerodrome opened up communications considerably, and the town has developed accordingly. Municipal status was attained in 1953, and the town is proud of its civic centre, with Town Hall, Municipal Offices, Public Library, and an outstandingly fine civic Theatre - The Charles Austin Theatre.



OUR ELEPHANT NEVER FORGETS

National and Grindlays remember all the little things that make the running of your finances that much smoother. And we never forget that you, as a customer, are a valued and respected friend.

It's the personal service and attention to your particular needs as an individual which make banking with us so much more satisfying.

FIND YOURSELF
AT GRINDLAYS



NATIONAL AND GRINDLAYS BANK LIMITED

Head Office in Rhodesia: 64 Baker Avenue, Salisbury.
BRANCHES AT SALISBURY RD, BULAWAYO CI, FORT VICTORIA, G.W.L.O., OUR QUE AND UNYALI.

LS 6356

Pioneer Landmarks

The Bell Tower is a well known landmark in Fort Victoria. It is part of the original Fort, and the Bell still tolls at 9 p.m. each evening, and also to acknowledge very significant events. The tower overlooks Allan Wilson Street.



Standard Bank



for all your
banking requirements
in Fort Victoria



You can bank on the Standard

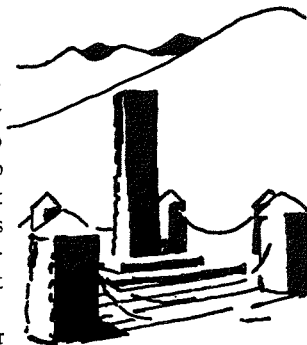
THE STANDARD BANK LIMITED - REGISTERED COMMERCIAL BANK

The Pioneer Display Tower is also part of the original Fort. It houses a collection of photos, and relics of Pioneer times. It is open to the public between 4 p.m. and 6 p.m. each weekday, and is situated in Hughes Street.

Original Fort at Chipsham Approximately 8 km south of Fort Victoria on the Beit Bridge road, is Chipsham Farm and here the original walls of the mud fort built by the Pioneers can be seen. The National Monuments plaque has been erected at the fort.

Pioneer Cemetery is situated 10 km from Fort Victoria. Travel along the Beitbridge road, and turn off to the right. Direction signs are seen on the roadside. The little cemetery with so many un-named graves is symbolic of those courageous men of whom so little is known, their life span was so short in a country with many difficulties in those primitive times.

Providential Pass The discovery of this pass in the hills, by the hunter Courtney Selous, who was commissioned by Rhodes to lead the Pioneer Column, brought a sense of relief to the travellers who had spent many weeks travelling through the Lowveld from Fort Tuli in the South West of the country. Having reached the higher altitude it was decided that the column had reached a suitable area to make its first settlement. A Memorial marking the site is situated about 12 km from Fort Victoria on the Beitbridge road. A lay-by has been constructed at the memorial to allow travellers to draw off the road at this point.





Meikles



THE LEADING DEPARTMENTAL STORE



SERVING FORT VICTORIA



Allan Wilson Street Tel. 2843/4/5



Mobil

Agents for:

PEUGEOT - VOLKSWAGEN - LAND ROVER

STANDARD SERVICES

(D.N. Holton (Pvt.) Ltd.)

Phone 2376 FORT VICTORIA P.O. Box 33

Ranching and Farming

The Victoria Group of European Intensive Conservation areas comprises Victoria Central, Victoria East, Mushandike, Nuanetsi, Chiredzi, Sabi Valley, Chatsworth and Gutu, and covers an area of 2 723 379 ha. The mean annual rainfall varies from 1000 mm in the Northern parts to 375 mm in the frost-free lowveld of the South. Cattle ranching is one of the main enterprises, and beef produced in the area makes a significant contribution to the country's exports. Pig production is also keen in the district, and dairying plays a minor role and is confined to the highveld areas. Expansion of irrigation along the banks of Lake Kyle is taking place; here maize and winter wheat is grown. Mushandike dam supplies water for irrigation, and in this area barley, winter wheat, maize and cotton is grown.

Industrial Possibilities

The Cold Storage works was established here because of the high cattle population of the district. Light industrial expansion has taken place gradually, with most noticeable growth during the past three years. There are several engineering works, plumbing works, irrigation services, as well as tyre retreading factories, diamond drillers, printers and refrigeration works. A brewery for African-type beer has expanded considerably, and there is also a large brick and tile works and a fibre-glass factory. There is an abundance of water, and labour suitable for industry is available.

Minerals and Mines

Fort Victoria is the centre of an active Mining District, producing a large variety of minerals including asbestos, copper, chrome, lithium, scheelite, tin and tungsten. Asbestos is concentrated at Mashaba, and at Glenclova the lithium deposit is the largest in the world. Emeralds are found at Chikwanda.

Mucheke Township

Fort Victoria is probably the most progressive town in Rhodesia in the matter of housing its 9 000 African population. Council has erected modern houses with full amenities, electricity, water and indoor sanitation.

There are two Primary and one Secondary schools. Council have recently opened a Training Centre for boys and girls of school leaving age.

The township has an excellent sports stadium, and with other playing fields caters for 7 teams in the National League and 12 in the Amateur League.

Other sporting facilities available include Tennis, Netball, Boxing and a Swimming Pool for the children.

In addition the Council has provided clinics, a Cinema, a modern Library and there are active Women's Clubs, Youth Clubs and a Children's Creche. Jairos Jiri have an excellent centre for disabled young people.

There are two modern taverns each with its own bar lounge, cocktail bar, food kiosks, dance floors.



Ask for Supersonic
—it sounds better

Supersonic

Theatre



Fort Victoria has made a contribution to Rhodesian theatre far in excess of its size as a town and is possibly the best known centre of theatrical activity outside of Salisbury and Bulawayo. With the opening of Rhodesia's most modern intimate theatre, the Charles Austin Theatre, the Fort Victoria Drama Circle enters a new phase in its history.

In addition to staging about six productions per year of its own in the theatre, the Drama Circle acts as host to many visiting companies both from South Africa and Rhodesia, resulting in a reasonable frequency of shows in the theatre. In addition, the theatre bar is open every Friday evening and Saturday midday, and guests of members are welcome.

The Drama Circle has won numerous awards in past National Drama Festivals, and with a large and enthusiastic membership, the high standard of production is maintained.

The Charles Austin Theatre is a civic building and forms part of the Civic Centre complex in the Queen Elizabeth Gardens. It is named after Alderman Charles Austin in recognition of his many years of service to the Fort Victoria community.

Places of Interest for the Tourist

Pride of place goes to **Great Zimbabwe Ruins** : These fantastic buildings of stone were first discovered by Adam Render, an American of German Descent in 1867 and the first written reports were made by Karl Mauch in 1871, a German Geologist who was taken to the Ruins by Adam Render who was a hunter and trader in Ivory.

The entire area covers some 714 ha., and can be roughly divided into three sections, the Great Enclosure, the Acropolis, and the Valley Ruins. Guide Books on the Ruins can be purchased at the Site Museum, at Zimbabwe, and these give details of the area, and suggest best ways of walking around the Ruins. A minimum of at least one full day should be allowed in the tourists' itinerary to explore this vast expanse of Ruins.

The secret of the Ruins is still hidden, and many are the speculations as to its origins.



In the site museum there are models to scale of the main sections of the ruins, and also a number of relics which have been recovered by Archaeologists over the years. Numerous books have been written about the Zimbabwe Ruins, and appendix in the "Guide to the Zimbabwe Ruins" mentions some books and publication on Zimbabwe, which could be of interest to the student or archaeologist.

Also at the Ruins is a 19th Century Karanga Village. This is a replica of the type of African Kraal which existed when Europeans first came to Zimbabwe. Here museum exhibits can be seen in their correct setting.

Adjacent to the Ruins is a most attractive Aloe and Succulent Garden, about 4 ha. in extent. These gardens are at their most colourful in June and July. A flight of steps up the rock-face at the back of the gardens goes up to an excellent look-out point, from where Lake Kyle can be seen.

Kyle

Lake Kyle The Dam Wall is approximately 15 km from Zimbabwe Ruins. It is the second largest dam in Rhodesia. The dam wall was completed at a cost of \$4,000,000 in 1961. It was originally built for the irrigation of the vast citrus and sugar estates in the Lowveld, where the towns of Chiredzi and Triangle have now grown up.

The tourist attractions of the lake have developed over the years, and here Angling Tournaments are held, national Sailing Schools, National Power Boat Regattas, and many hundreds of enthusiastic fishermen enjoy holiday fishing at the lake. The lake is stocked with bass and bream as well as many other species of fish.

At the Dam Wall there is an attractive little chapel, **St. Andrew's Chapel** built by the water bailiff Mr. Tom van Graan - the church is a memorial to his young daughter Marie Elizabeth who was killed in a motor car accident.

Inside the chapel there are seven different types of minerals coming from mines in the Fort Victoria district. The church is Interdenominational.

Motor Sales & Agencies

(Pvt.) Ltd.

Agents for:-

ALFA ROMEO & MAZDA

24 - HOUR PETROL SALES

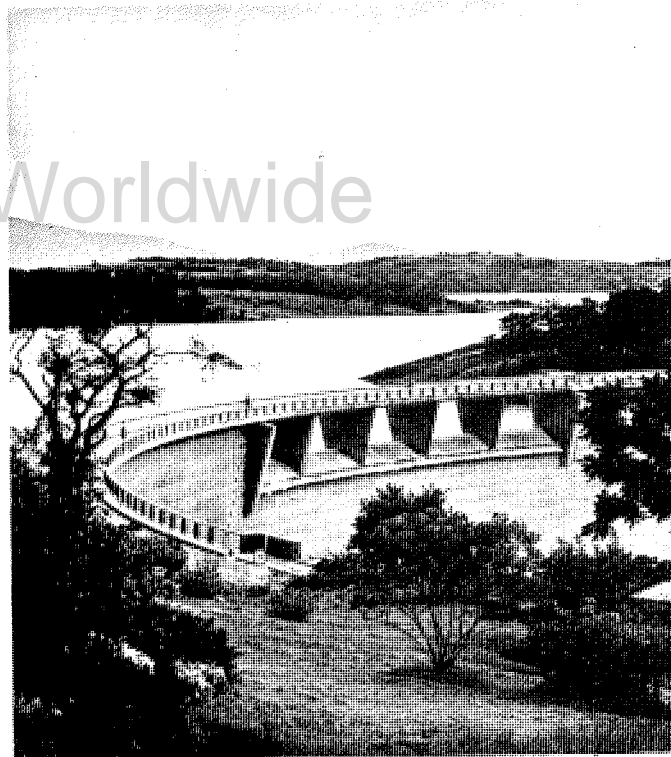
Phone 2646

P.O. Box 415

FORT VICTORIA

Kyle Dam Statistics

Basin capacity: 1 329 700 000 cubic metres
 Height: 63 metres
 Catchment Area: 398 856 hectares
 Surface Area: 9 1000 hectares
 Shoreline: 240 km
 Spillway length: 61 metres
 Crest: 314 metres
 Thickness: Top 3 metres Base 7 metres
 Concrete Volume: 1 840 cubic metres
 Annual Release: 11 090 000 cubic metres





**SPARES AND SERVICING
for RENAULT, B.M.W. & FORD**

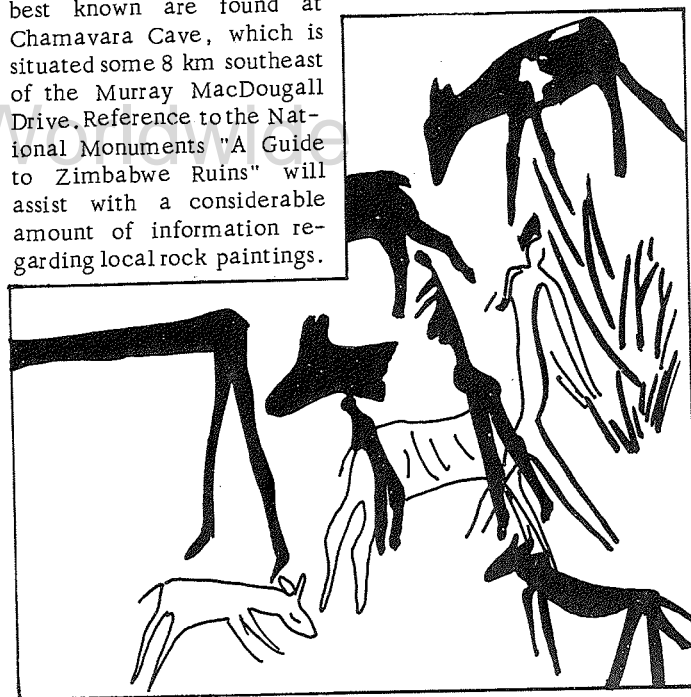
Allan Wilson Street
Phone 2471 P.O. Box 7
FORT VICTORIA

Mushandike National Park

Situated to the west of the town, Mushandike covers an area of 13 360 ha. The dam is well stocked with black bass and bream. It is here that the R.E.C.C.E. School - Rhodesian Educational Courses in Conservation and Environmental Studies - is developing a unique school. Each week 50 Standard Five pupils from schools throughout Rhodesia attend a course of practical training in the concept of Nature Conservation.

Rock Paintings

There are many rock paintings in the area, all have been sign-posted with the "National Monuments" sign. Some of the best known are found at Chamavara Cave, which is situated some 8 km southeast of the Murray MacDougall Drive. Reference to the National Monuments "A Guide to Zimbabwe Ruins" will assist with a considerable amount of information regarding local rock paintings.





The RHOBANK Group of Companies offers a complete range of financial services—all normal banking facilities, PLUS trust and estate business, courtesy and travellers' cheques, instant cash cards, safe deposit lockers, hire purchase, savings and investment advice, travel arrangements, insurance advice.



*so much more
than a bank*

RHODESIAN BANKING CORPORATION LIMITED

(Registered Commercial Bank)

GROUP COMPANIES

Scottish Rhodesian Finance Limited
(Registered Financial Institution)
Neficrho Acceptances Limited
(Registered Accepting House)
NBR Executor and Trust Company Limited
Travel International Limited
Associated company:
Lawsons Insurance Brokers Limited

Italian Chapel

This Chapel was built by the Italian Prisoners of War of the 5th Camp extension of Fort Victoria during the years 1942/46. Most of the Prisoners of War originated from Ethiopia. The Chapel was built more or less as it stands at present, with the exception of the two wings, which were added after the war. Here the remains of 71 Italian Prisoners of War who had died in captivity were interred. Other camps were situated in Salisbury, Gatooma, Lusaka, Gwelo, Umvuma, Selukwe and Chipinga.

The paintings and mosaics of the Apse are the works of an Italian Civil Engineer, who was himself a Prisoner of War. The Murals and paintings of the Aisle were done by the Italian Authorities in 1956/57 at the time when the wings and tombs were constructed. On the 27th January, 1957 the Chapel was consecrated by Bishop Francis Mazzieri.

An African watchman is on duty everyday. Mass is celebrated each Saturday morning, and each year on the first Sunday in November a special memorial service is held in honour of those Italians who died in the two world wars.



FORT VICTORIA - *Facts & Figures*

Altitude: 1 082m above sea level. Climate: Moderate. Average Rainfall: 650mm

Population

Municipal Area	
European	2 800
Asian & Coloured	400
African	11 000

Total Valuation

Land	3 256 135
Improvements	18 033 690
	<u>\$19 289 825</u>

Municipal Tariff

Water: Domestic: First 2 000 gallons \$2.60, balance of next 13 000 gallons at 45¢ per 1 000 and thereafter 35¢ per 1 000.
 Commercial: First 2 000 gallons \$2.60, balance 75¢ per 1 000 gallons per month.
 Public Health: Services: Domestic: Residence: \$4.50 per month per stand. Flats: \$3.25 per month per flat.
 Commercial: \$3.50 per stand per month with sliding scale assessed on floor area of building.
 (Special concessions to large consumers of water and electricity by arrangement).

Rates

Rates on Land:
 Land: 3.5¢ in the Dollar.
 Improvements: .5¢ in the Dollar.
 Residential Land:
 Land: \$2,500 per hectare.
 Building Clause: Minimum \$8 000 to \$10 000 depending on site and main buildings.
 Industrial Land:
 The calculated price of Industrial land (heavy and light) is \$3707 per hectare, with \$1976 added for Railspur facilities.

Electricity Supply Commission Tariff

Domestic: Within Municipal Area: Minimum 19 units per month at 10¢ per unit. Next 31 units per month at 7¢ per unit. Next 200 units per month at 1.25¢ per unit. Balance of monthly consumption at 1¢ per unit. Minimum per month \$1.90.
 Commercial: Within Municipal Area: First 28 units per month at 10¢ per unit. Next 72 units per month at 7¢ per unit. Next 500 units per month at 3.3¢ per unit. Balance of monthly consumption at 1.25¢ per unit. Minimum per month \$2.80.
 Further information obtainable from the District Manager, Electricity Supply Commission, P.O. Box 5, Fort Victoria. Telephone 2138/9.
 The above tariff is subject to review.

Places of Worship

Anglican Church
 Methodist Church
 United Apostolic Faith
 Presbyterian Church
 Church of England in Southern Africa
 Roman Catholic Church



Baptist Church
 Dutch Reformed Church
 Church of Christ
 Rhodesian Hervormde Church
 Full Gospel Church
 Seventh Day Adventist Church

Sporting Facilities

The Victoria Sports Club has excellent bowling greens, tennis courts, squash court and an 18 hole golf course, also sports fields for rugby and cricket.
 There is a clay pigeon shooting club, a rifle club, a fine Municipal swimming pool, a keen swimming club, a badminton club, and a table tennis club.

There are three Angling societies based on the shores of Lake Kyle. The Kyle Boat Club caters for all types of water sports, with special sections responsible for sailing, angling, water skiing and power boating, as well as model power boating.
 In the town there are two well supported yukskei clubs.

Medical Facilities

Hospital services include a General and Maternity Hospital, with ante natal clinics provided at the latter.

There are six doctors and one dentist. Medical Superintendent: Dr. Ascough, Dr. Theron, Telephone 2112/3. Dr. Hacker and Dr. Campbell-Rose, Telephone 2424 Surgery. Dr. Sinclair and Dr. Warne, Telephone 2650 Surgery. Dr. Shay, (Dentist) Telephone 2336 Surgery.

Hospital visiting hours: 3.30 to 4.30 p.m. and 7 p.m. to 8 p.m. daily. Maternity Home: 11 a.m. to 12 noon, 4 p.m. to 5 p.m. and 7 p.m. to 8 p.m.

Transport

RHODESIA RAILWAYS operates a Bus Service to and from Salisbury and Umtali three days a week.

ALICK STUART run a daily bus service to and from Bulawayo every day except Sundays.

U.T.C. run a week-end excursion luxury coach tour from Salisbury to Zimbabwe.

SUPER EXPRESS BUS SERVICE will hire buses for special tours - previous arrangements must be made.

Taxis

CAR HIRE: Duly's, Rent-a-Car, and Herst, have cars for self drive.

SUPER EXPRESS TAXIS Telephone: 2970
 AI TAXIS Telephone: 2696

FORT VICTORIA'S FRIENDLIEST STORE

BALMAIN



SPAR
 SUPERMARKET
 BOTTLE STORE
 RHOD. COPPER
 Phone 2915

LADIES' & MEN'S
 FASHIONS
 SCHOOL UNIFORMS
 MATERIALS
 Phone 2708

Education in Fort Victoria

Fort Victoria High School, Tel. 2549, P.O. Box 241

A co-educational Government School which is comprehensive in character. The school has fine up-to-date hostels, and caters for both day and boarding pupils. The academic forms study to write Rhodesian Certificate of Education, and the Ordinary and Matriculation levels, and certain subjects taken at "A" level. The school also provides for the study of Commercial and Technical subjects. Well planned playing fields, and all sporting facilities are offered the pupils. Over 600 children attend from the age of 12 + in forms one to six.

Fort Victoria Junior School, Tel. 2833, P.O. Box 113

A Government School with approximately 450 pupils from the age of 7 + to 12 years studying in Standards one to five. The school has hostels and caters for both day and boarding pupils. The traffic training school, sponsored by the Rotary Club of Fort Victoria, is one of the best equipped in the country.

Fort Victoria Infant School, Tel. 2974, P.O. Box 74

A Government School for infants one and infants two. The school has 6 teachers and approximately 157 pupils from the ages of five to seven years. The school has lately built its own swimming pool.

Andrew Louw School, Tel. 2983, P.O. Box 249

A small country school, eight kilometres from Fort Victoria, covering the full range of primary and junior education, from infants one to Standard Five. Facilities for day and boarding pupils.

Helen McGhie School, Tel. 2748, P.O. Box 322

Government School for Coloured and Asian pupils covering full range primary and junior education from infants one to Standard Five. The school has approximately 110 pupils and five teachers.

Fort Victoria Nursery School, Tel. 2293, P.O. Box 313

Privately run by a local committee this school takes 48 pupils from the age of 3 to 5 years at the cost of \$25 per term.

The Murray MacDougall Drive

Named after Tom Murray MacDougall, the first man to plant sugar in the Lowveld, and thus project the idea of irrigating the vast Lowveld area.

The Drive is approximately 17 km and is fully tarred, with attractive lay-bys for picnickers. The Drive links the eastern side of Kyle with the roads on the Glenlivet side of the Lake, thus completing a circular route around the lake, land joining the Fort Victoria/Birchenough Bridge road.



Glenkyle Caravan Park

GLENLIVET, LAKE KYLE

Turn-off 24km from Fort Victoria on Fort Vic./Umtali road

Pleasant location on the shores of Lake Kyle, among the beautiful Glenlivet mountains. Also within reasonable distance of Zimbabwe Ruins. From your caravan you can sit and watch game on the opposite Game Park bank.

Bring your Binoculars. Rowing Boats for Hire. Excellent Bass and Bream fishing. Fully equipped Caravans for hire on site. Ample hot water. Electric light and power points. Supply Store. Domestic servant available on request.

Under the personal supervision of MAX & WIN WEBSTER
P.O. BOX 469 Telephone 2727-22
FORT VICTORIA

The WOODEN MASK

at Zimbabwe Ruins

Offers you the
largest selection

of
CURIOS

in the District

P.O. Box 457
Fort Victoria

Trade Enquiries
Phone 2463-17



CALL ON US FOR THE BEST SELECTION
OF CURIOS - COPPERWARE -
GEMSTONES - POST CARDS - FILMS -
SLIDES AND ALL TYPES OF AFRICAN CRAFTS

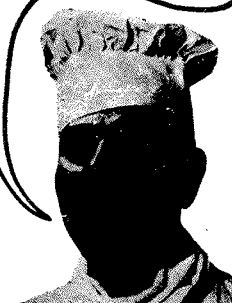
WE PACK & POST TO ALL COUNTRIES

Kyle Game Park

An attractive park of some 8,000 ha., with 64 km of game viewing roads winding through the park. The reserve has a large variety of antelope, as well as many other animals including white rhino, giraffe, buffalo, zebra, ostriches and smaller animals. The game park is open throughout the year, and only during a very wet rainy season may some of the roads be closed for a few days at a time. Most delightful lodges are situated on the side of a hill overlooking the lake, also an extremely attractive caravan and camping site. Enquiries regarding pony trails and wilderness trails through the park should be made to the Wardens in charge.



Colcom !



The choice of
**CARAVANERS,
HEFS,
CAMPERS**

For the coming holiday
period don't forget your —

- ★ Tomato Sauce
- ★ Tinned Curry & Rice
- ★ Baked Beans
- ★ Pâté de Foie
- ★ Tinned Cocktail Sausages

You know it's good

'COLCOM'

THE CAR MART

(RHODESIA) (PVT.) LTD.



FORT VICTORIA

P.O. Box 91

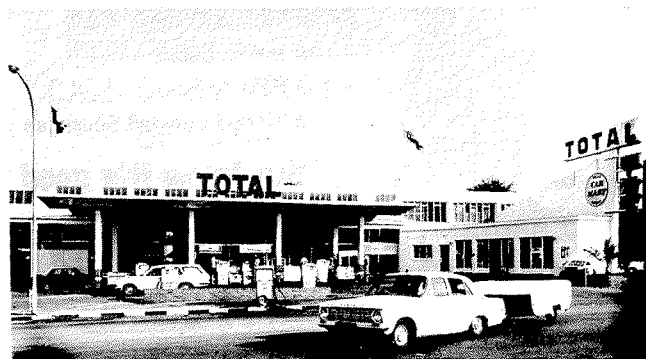
Telephones: 2038/9

Specialised Service offered for
B.M.C.

DATSUN

CITROEN

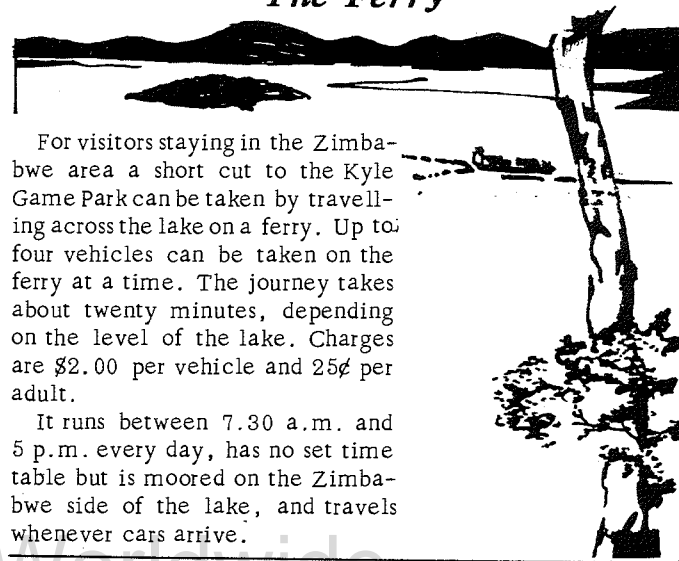
Also at Salisbury, Bulawayo, Gwelo & Gatooma



The Ferry

For visitors staying in the Zimbabwe area a short cut to the Kyle Game Park can be taken by travelling across the lake on a ferry. Up to four vehicles can be taken on the ferry at a time. The journey takes about twenty minutes, depending on the level of the lake. Charges are \$2.00 per vehicle and 25¢ per adult.

It runs between 7.30 a.m. and 5 p.m. every day, has no set timetable but is moored on the Zimbabwe side of the lake, and travels whenever cars arrive.



Find something different!

- A FUN-THING FOR A FEW CENTS OR AN INVESTMENT WORTH MANY DOLLARS.

shiriyamwari

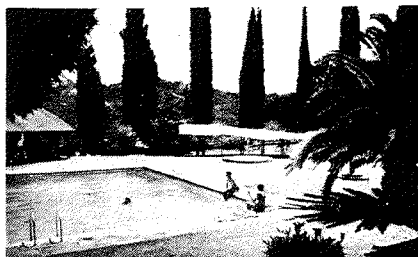
tel 2693 art & handcraft

allan wilson buildings (next to Post Office)

ZIMBABWE SAFARI LODGE



Overlooking the lovely Zimbabwe Valley. From our verandah you can see the fascinating Acropolis and the Temple of the Zimbabwe Ruins. This unique hotel, set in the heart of Zimbabwe country, with Lake Kyle nearby, offers comfort, personal service, private bathroom to every bedroom, and a glorious swimming pool.



Private Bag 9090 Telephone 2449
FORT VICTORIA

Le Rhone Game Farm

Situated in the hills east of Zimbabwe, this game farm offers excellent opportunities for viewing and photographing Rhodesia's wildlife at close quarters. A feature of the farm is the Lion Park where lions may be seen and studied in their natural surroundings. Other species to be found on the farm include cheetah, leopard, elephant and a variety of smaller animals. There is a curio shop at Le Rhone, and teas and cold drinks are available.



Associations and Clubs

Advanced Motorist Club
Agricultural and Horticultural Society
Anglican Church Women's Association
A.R.N.I.
Business and Professional Women's Club
Bridge Club
Boy Scout Association
Catholic Women's League
Fort Victoria Angling Society
Fort Victoria & District Arts Council
Fort Victoria Drama Circle
Fort Victoria Garden Club
Gem & Mineral Society
Girl Guide Association
Kyle Boat Club
Lions Club
Loyal Women's Guild
Masonic Lodge

Motor Traders Association
M.O.T.H.S.
Nurses Association
R.A.O.B.
Red Cross Society
Rotary Club
Round Table
Rotoract
R.N.F.U.
Rhodesia Caravan Association
Sea Horses Swimming Club
Small Bore Rifle Club
S.P.C.A.
Toc H
Victoria Singers
Victoria Sports Club
Women's Institute

The Barclays Savings Receipts Scheme

It's as easy
as signing
your
name.



ANOTHER FIRST FOR BARCLAYS!
Savings Receipts. A safe, easy way
to save your money.
For full details ask for the Savings Receipt
leaflet at Barclays.

Thinking ahead on your account.



Barclays



Barclays Bank International Limited (Registered Commercial Bank — Incorporated in the United Kingdom)

Missions

No publication on the Fort Victoria area would be complete without some mention of the numerous Missions which have developed and do tremendous work among the Africans.

The Morgenster Mission was founded by Rev. A. A. Louw in 1891, and is directed by the Cape Section of the Dutch Reformed Church. A large settlement has grown here, and schools and hospitals are attended by many Africans from all over Rhodesia. Their school for the deaf was one of the first of its kind in the country.



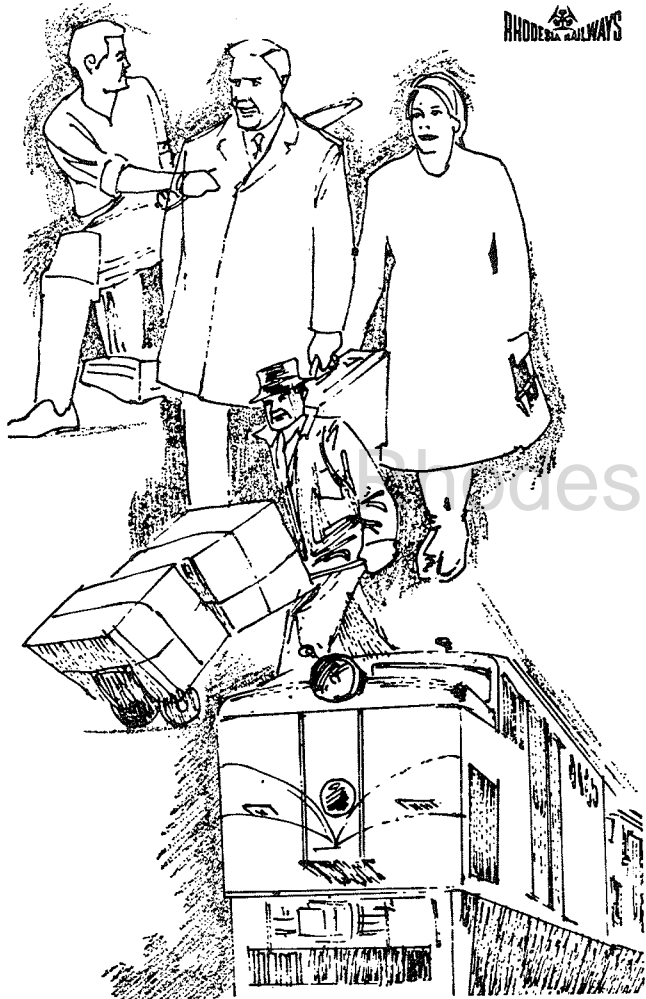
Copota School and Workshop for the Blind, is an offshoot of the Morgenster Mission. This too was one of the first schools of its kind in Rhodesia. Their choir is famous and has given concerts in many different countries. Tourists are welcome to visit the school, on Tuesdays and Thursdays, at 2.30 p.m. when they are entertained by the choir, and taken on a tour around the school, the printing works (where braille books are printed) and the workshops.



Serima, Gokomere and Bondolfi Missions are all run by the Roman Catholic order. They are well known for their very fine workmanship in carving, both wood and soapstone, also leather work and other handcrafts. Tourists wishing to visit the Missions should preferably make arrangements prior to their visit.

We make it so easy to travel.

RHODESIA RAILWAYS



Accommodation

Fort Victoria

CHEVRON HOTEL L * * P.O. Box 245, Phone 2054/5
 FLAMBOYANT MOTEL L * * P.O. Box 225, Phone 2005/6
 HOTEL VICTORIA L * P.O. Box 126, Phone 2976
 FORT VICTORIA CARAVAN PARK..... P.O. Box 17, Phone 2431

Fort Victoria & District

ZIMBABWE SAFARI LODGE L * * P. Bag 9090, Phone 2449
 GLENLIVET HOTEL L * P.O. Box 146, Phone 2727-19
 ZIMBABWE RUINS HOTEL L * * P. Bag 9082, Phone 2274
 LE RHONE LODGES & CARAVAN PARK (P) P.O. Box 572, Tel. 2238-26
 BEROMA HILLS CARAVAN PARK P.O. Box 518
 GLENKYLE CARAVAN PARK P.O. Box 469
 KYLE VIEW CHALETs & CARAVAN PARK P. Bag 9055
 Telephone 2238-22
 KYLE NATIONAL PARK..... P. Bag 9136, Phone 2913
 MUSHANDIKE NATIONAL PARK..... P. Bag 9036, Phone 2945-25
 ZIMBABWE NATIONAL PARK P. Bag 9087, Phone 2463-19

ACE MOTORS

*** SPACIOUS FORECOURT**

*** 24-HOUR PETROL SERVICE**

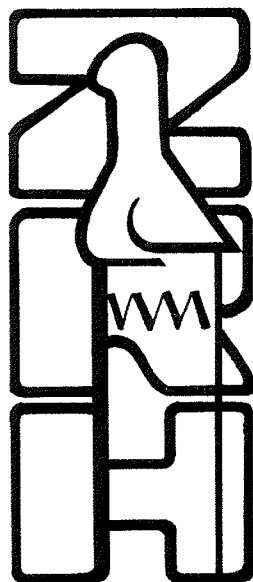
*** TYRE SERVICE**

Phone 2963

Fort Victoria



Great Zimbabwe, mysterious home of a long-vanished civilisation. History and intrigue carved on every stone. And close-by, set in the surrounding blue hills and lush green valleys, the Zimbabwe Ruins Hotel. A selected Flame Lily Hotel. Recommended for its cool, thatched rooms with private bathroom, radio and telephone. Its excellent cuisine and quaint Round Bar. A perfect base for exploring Zimbabwe, the magnificent aloe gardens and nearby Lake Kyle, mecca of boating, water-skiing and fishing. Or just taking things easy, golfing on the nine-hole course, swimming in our sparkling pool or watching T.V. Explore Zimbabwe our way. It's fun.



ZIMBABWE

RUINS

HOTEL L★★

PRIVATE BAG 9082, FORT VICTORIA
TELEPHONE 2274

TELEGRAMS: ZIMBABOTEL

Glenlivet

Situated on the north east side of Lake Kyle this is a most attractive area, particularly during the September/October months when the Msasa trees which cover the hillside are in full colour. To reach Glenlivet travel approximately 27 km along the Birchenough Bridge road, then turn right, and the road runs along the Mtilikwe arm of Lake Kyle. Here there are attractive lay-bys, where beautiful views of the lake can be enjoyed. Glenlivet can also be reached by travelling from Zimbabwe to the Dam wall, cross the wall, and travel along the Murray MacDougall Drive, and a further 18 km will bring you to the Glenlivet Hotel. A caravan park on the shores of the lake is situated about 7 km from the Birchenough Bridge turn-off.



FOR SAFETY
AND SAVINGS
ON THE ROAD
FIT BU-POL
RETRREADS
FROM

RTS

RHODESIAN TYRE SERVICES

RHODESIAN TYRE SERVICES

P.O. Box 212

Telephone 2278

FORT VICTORIA



FLAMBOYANT Motel



Pull into the Flamboyant Motel, one of Rhodesia's newest motels. The perfect stop-over between South Africa and Salisbury. Ideally situated just outside Fort Victoria, for touring nearby Zimbabwe, Lake Kyle and Game Park and the historic town itself. Let us pamper you after your tour of the many scenic attractions. Relax with a dip in our pool, a doze on our sunny verandah, a cool cocktail in the Blue Jay Bar. Wine and dine a la carte or table d'hote. And rest contented in the superb comfort of our rooms, carpeted wall to wall, and with all the modern comforts a weary traveller could desire. With service just a smile away. If you like to stay in style, you'll love the Flamboyant.



P.O. Box 225

Telephone 2005/6
FORT VICTORIA

Shopping & Banking Information

POST OFFICE HOURS:

Weekdays..... 8.30 a.m. to 4 p.m. Saturdays ... 8.0 a.m. to 12 noon

BANKING HOURS:

Barclays Bank International, Standard Bank Limited, National and Grindlays Bank, Rhobank.

The above banks are open on Mondays, Tuesdays, Thursdays and Fridays from 8.30 a.m. to 1 p.m. Wednesdays from 8.30 a.m. to 12 noon. Saturdays from 8.30 a.m. to 11 a.m.

LIBRARY HOURS:

Weekdays 10 a.m. to 12 noon, 4 p.m. to 5.30 p.m. Saturdays 10 a.m. to 12 noon.

SHOPPING HOURS:

Weekdays 8 a.m. to 5 p.m. Saturdays 8 a.m. to 12 noon. SHOPS DO NOT OPEN DURING THE LUNCH HOUR.

PUBLICITY BUREAU HOURS

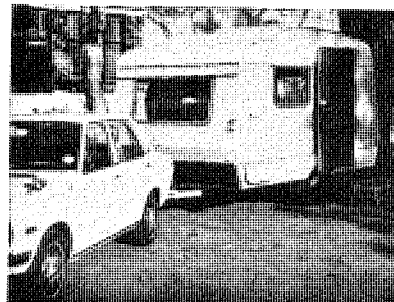
Weekdays 8 a.m. to 1 p.m., 2 p.m. to 4 p.m. Saturdays 8 a.m. to 11 a.m.

AERODROME:

Daily flights from and to Salisbury - weekdays. Flights to and from Bulawayo, Monday, Wednesday and Friday.



RENT-A-CAR



FOR
CARAVAN
OR
CAR
HIRE

Phone 2456/2338

P.O. Box 456

FORT VICTORIA



P.O. Box 245

Tel. 2054/5

L * *

⇒ We have a spacious, comfortable lounge, a television lounge, conference room, and wide, shady verandah - with Chevron Service always to hand.

⇒ You'll love our spacious, cool bedrooms, all with radio and phone. Twelve are air-conditioned, and you may have your private television set.

⇒ There are three attractive bars, an intimate grill-room, and you can swing in our basement night-spot, the Caves, on Wednesday, Friday and Saturday. Our swimming pool is always open!

The new Chevron Hotel is at the hub of the tourist scene - just where you need to be to enjoy historic Fort Victoria (just outside our front door), the mysterious Zimbabwe Ruins (26 km south of Fort Victoria), and beautiful Lake Kyle with its game reserve (29 km west of Fort Victoria).

Our new hotel provides comfort, convenience, and an up-to-date type of personal attention we call Chevron Service. Try us - we'll love having you.

Publicity Bureau

Situated at the entrance to the town on the Beitbridge road is the Publicity Bureau. This building was opened in 1960, and here a most comprehensive supply of information can be obtained.

Fort Victoria being very often the first port of call for visitors from the South, it is here that they are able to obtain brochures, maps, information and advice on their entire holiday in Rhodesia. Although the Bureau specialises in the promotion of the Fort Victoria, Zimbabwe Ruins and Lake Kyle areas, a considerable number of publications supplied by the Rhodesia National Tourist Board, the Ministry of Information, and Publicity Associations, is kept at the bureau for the convenience of the tourist. Brochures concerning the Republic of South Africa, Malawi and Mocambique are also available at the Bureau.

An average of some 6000 people call annually at the bureau. The office is open from 8 a.m. to 1 p.m. and from 2 p.m. to 4 p.m. on weekdays and from 8 a.m. to 11 a.m. on Saturdays.

Rhodesia's top three

MEIKLES, SALISBURY L***

Right in the heart of the capital, and internationally renowned for its cuisine and service. 111 rooms all with free T.V. and air-conditioning. 2 famous bars. First class restaurant with very popular dinner-dances to the music of a band of international standard.

THE RAINBOW, VICTORIA FALLS L***

A new luxury hotel, set in lush tropical bushland, less than 1 km from the Victoria Falls. Exceptionally high standard of cuisine and service, at very reasonable rates. 46 fully air-conditioned rooms and unique bars including the "swim-up" pool bar.

BUMI HILLS SAFARI LODGE, LAKE KARIBA L-

A luxury lodge with private game-viewing patios on the edge of Lake Kariba. 30 double rooms, air-conditioned public rooms; game and photographic safaris with experienced guides; watersport and excellent fishing on the lake.

CENTRAL RESERVATIONS: Salisbury 705050. Telex: RH4214. P.O. Box 3598.



A TRADITION FOR SERVICE IN RHODESIA



Le Rhone

**ZIMBABWE'S
LAKESIDE LODGES
& CARAVAN PARK**



Only 4 km from the Zimbabwe Ruins, Le Rhone Lodges and Caravan Park nestles on Lake Kyle's placid shores - a sportsman's dream world of bass fishing, yachting, water-skiing. A photographer's paradise is only a few kilometres away at Le Rhone Game Farm - or take the ferry to Kyle National Park. Discover for yourself this exciting country.

There is a licensed restaurant with a la carte cuisine, and a cocktail bar with a view. All lodges are self-contained and serviced daily. The caravan park provides private ablution blocks for each unit. There is a filtered swimming pool, boat jetty and launching ramp for small craft.



LE RHONE LODGES AND CARAVAN PARK
P.O. Box 572, Fort Victoria. Tel. 2238-26



